



# How many hours does the solar container outdoor power discharge





## Overview

---

If you have a 10kWh lithium - ion solar battery and you're powering a small house with a load of about 1kW, you can expect the battery to discharge for around 10 hours. Now, let's talk about real - world scenarios. Without running AC or electric heat, a 10 kWh battery alone can power the critical electrical systems in an average house for at least 24 hours, and longer with careful budgeting. In other words, its efficiency will not change much within a year. However, we also need to consider the cycle life of the battery.



## How many hours does the solar container outdoor power discharge

---



### [How Long Does A Fully Charged Solar Battery Last During Power ...](#)

In summary, a fully charged solar battery typically lasts between 4 to 10 hours during power outages, depending on its capacity, energy consumption, and environmental factors.

### HOW LONG DOES IT TAKE TO DISCHARGE A CONTAINER?

How long does it take for an solar container station to discharge If you have a 10kWh lithium - ion solar battery and you're powering a small house with a load of about 1kW, you can expect the battery to ...



### Solar Battery Run Time Calculator

What is a Solar Battery Run Time Calculator? This calculator helps you determine how long your solar battery system can power your devices, taking into account key factors like battery ...

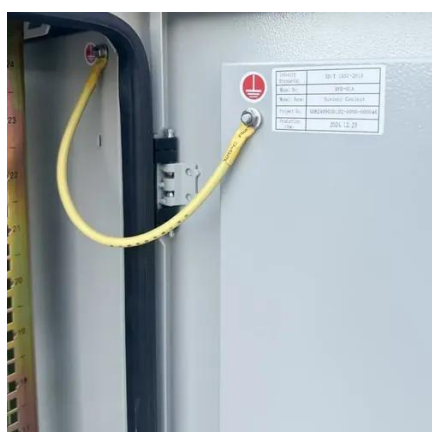
### [How to Calculate Solar Battery Backup Time for Optimal Energy ...](#)

Discover how to accurately calculate solar battery backup time in our comprehensive guide. Understand the essential factors, including battery capacity, power consumption, and depth of ...



## [How Long Can Solar Battery Power a House During an Outage?](#)

Discover how to accurately calculate solar battery backup time in our comprehensive guide. Understand the essential factors, including battery capacity, power consumption, and depth of ...



## **How Long Can a Solar Battery Run Your House?**

The runtime of a solar battery depends on several factors, but a typical 10kWh solar battery can power essential appliances such as lights, a fridge, and a fan for approximately 24 hours.



## **What's the Runtime of Solar Powered Generators?**

Typically, a brand new solar generator with a fully charged battery will hold its charge for about a year. In other words, its efficiency will not change much within a year. However, we also ...



## [How long does it usually take for solar](#)



## [container to discharge](#)

12v lead acid battery from 50% depth of discharge will take anywhere between 2 to 20 peak sun hours to get fully charged with a 100 watt solar panel. 12v lithium battery from 100% depth of discharge will ...



## [How Long Can Solar Battery Power a House During an Outage?](#)

In this article, we'll show you how to calculate how a solar and battery system can power your house during a grid outage, and give you some tips for maximizing your battery usage.

## **Solar Power Home System for Shipping Containers**

Do you want your batteries to provide backup power for a few hours during outages, or for a whole day or even longer? The longer your desired backup time, the more battery storage you'll need.



## **Outdoor Solar Battery Installation Guide**

Thinking of placing a solar battery outside your home? Learn expert tips on safety, design, climate resistance & smart installation for long-term reliability.



## Contact Us

---

For catalog requests, pricing, or partnerships, please visit:

<https://www.firmaskrzypek.pl>

Phone: +48 22 426 71 90

Email: [info@firmaskrzypek.pl](mailto:info@firmaskrzypek.pl)

Scan the QR code to access our WhatsApp.

