



How many square meters is a rooftop photovoltaic panel





Overview

Solar Panel Wattage (W) Most residential panels are 350–450W. Check your panel specs or use an average value. Estimate how many solar panels fit your roof and the total system capacity (kW) based on roof area and panel specifications. This setup is also known as solar rooftop photo-voltaic system. This guide explains the idea in plain words, with examples that anyone can follow — even if maths is not your thing. **What Does a Roof Solar Calculator Do?**

This type of calculator estimates how many. The Solar Power Roof Area Calculator is a valuable tool designed to help users estimate the required roof area for installing solar panels.



How many square meters is a rooftop photovoltaic panel



Solar Power Per Square Meter Calculator

Calculate solar panel energy output per square meter. Get accurate daily, monthly, and annual production estimates based on location, panel specs, and system losses.

Solar Panels for Roofs

It calculates the maximum number of panels that fit on the available roof surface, taking into account important factors such as orientation, inclination, and panel type. It's important to note that this ...



[How Many Solar Panels Will Fit on My Roof \(Easy Guide\)](#)

Learn how a "How Many Solar Panels Will Fit on My Roof" calculator works. Simple examples, clear steps, and no confusing math. Perfect for beginners.

[Solar Power Roof Area Calculator , Roof Space Needed for a Solar ...](#)

The Solar Power Roof Area Calculator is a valuable tool designed to help users estimate the required roof area for installing solar panels. Its primary use is to determine how much space is ...



[How many square meters are photovoltaic solar panels?](#)

Typical size of solar panels is around 1.6 to 2 square meters, 2. Power output ranges anywhere from 250W to 400W per panel, 3. To determine the number of panels needed for a specific ...



Solar Rooftop Calculator , Solar Panel Calculator

Online Solar Roof Top Calculator Calculates the number of solar panels, kilowatt capacity, daily unit production, and require area in Square Meter as well as Square Feet based on the average monthly ...



Deye Official Store

10 years warranty

[How Many Square Meters Are Photovoltaic Panels? A ...](#)

Ever wondered how much roof space you'd need to become your own power plant? Let's break down the spatial requirements of solar panels. A standard 320W photovoltaic panel measures about ...

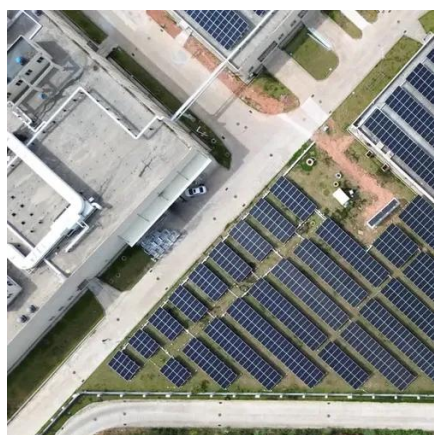


Rooftop Solar Panel Size and Layout



Guide

Large-size modules: Often rated between 550-700W, with lengths exceeding 2.2 m and widths close to 1.3 m. These are ideal for commercial and industrial rooftops, enabling higher ...



[Rooftop Area Calculator for Solar Installation , Estimate in Sq.Ft](#)

Use our free rooftop area calculator to estimate how much space you have for solar panels. Enter your length & width to get kW capacity and space availability.

[Roof Area to Solar Panel Capacity Calculator \(kW Estimator\)](#)

Use our Roof Area to Solar Panel Capacity Calculator to estimate how many solar panels fit on your roof and total system capacity in kW. Adjust for usable roof area, panel size, wattage, and spacing losses.





Contact Us

For catalog requests, pricing, or partnerships, please visit:

<https://www.firmaskrzypek.pl>

Phone: +48 22 426 71 90

Email: info@firmaskrzypek.pl

Scan the QR code to access our WhatsApp.

