



How many square meters is each solar panel





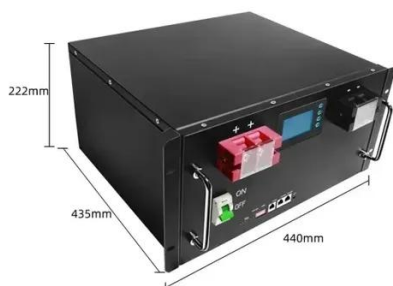
Overview

The average solar panel size is approximately 1. This measurement can vary slightly based on the manufacturer and the specific model of the panel. Most standard residential solar panels are around 65 inches by 39 inches, which translates to about. Estimate your solar energy production per m² with accurate calculations for any location. This calculator provides estimates only and should not be used as the sole basis for solar system purchases or financial. Solar panels have become a cornerstone of renewable energy, but many wonder: How much power can a single square meter of solar panels actually produce?

Let's break down the science behind photovoltaic efficiency. Under optimal conditions (5 peak sun hours): At noon under direct sunlight: *Note: 1m². Discover the average size of a solar panel in square meters and its implications for your energy needs and installation space. Power output ranges anywhere from 250W to 400W per panel, 3.



How many square meters is each solar panel



MANY , English meaning

We use many to refer to a large number of something countable. We most commonly use it in questions and in negative sentences: ...

Many Definition & Meaning

Many definition: Amounting to or consisting of a large indefinite number.



[How many square meters are photovoltaic solar panels?](#)

A typical solar panel measures about 1.6 to 1.7 square meters, depending on the manufacturer and efficiency design. Most panels are rectangular, which allows for efficient ...

[many , Dictionaries and vocabulary tools for English](#)

many or much? Many is used with words for things that we can count. Much is used with words for things that we cannot count. Compare: Do you have many things to do today? Do you have much ...



[How many square meters is a solar panel? - NenPower](#)

Solar panels come in various sizes and specifications, but the most common residential panels typically measure around 1 meter by 1.6 meters, resulting in an area of approximately 1.6 ...



[MANY definition and meaning - Collins English Dictionary](#)

You use many to indicate that you are talking about a large number of people or things. I don't think many people would argue with that. Not many films are made in Finland. Do you keep many books ...



Solar Power Per Square Meter Calculator

Calculate solar panel energy output per square meter. Get accurate daily, monthly, and annual production estimates based on location, panel specs, and system losses.



How Many Square Meters is One



Solar Panel?

This article will delve into the average size of a solar panel in square meters. We will explore the standard dimensions, the typical energy output associated with these sizes, and how ...



many determiner

Definition of many determiner in Oxford Advanced Learner's Dictionary. Meaning, pronunciation, picture, example sentences, grammar, usage notes, synonyms and more.

[Many - meaning, definition, etymology, examples and more -- Self](#)

Explore the word "many" in detail, including its origins, variations, and common phrases. Learn about its historical and contemporary usage, as well as its impact on language and culture.



[How Many Square Meters is a Solar Panel: Key Insights](#)

The average solar panel size is approximately 1.6 square meters (about 17.2 square feet). This size can vary slightly based on the type and manufacturer of the panel.



[How Many Square Meters Are Photovoltaic](#)



[Panels? A ...](#)

Ever wondered how much roof space you'd need to become your own power plant? Let's break down the spatial requirements of solar panels. A standard 320W photovoltaic panel measures about ...

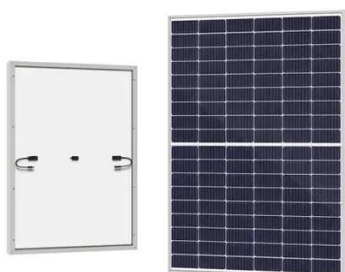


Solar Panel Watts Per Square Meter Explained

Compare solar panels to see which generates most electricity per square meter. A higher W/m value means a solar panel produces more power from a given area. This can help you determine how ...

[Solar Energy Generation Per Square Metre: A Complete Guide](#)

How much electricity can solar panels generate per square metre? Most solar panels generate 150-220 watts per square metre, depending on efficiency and conditions.



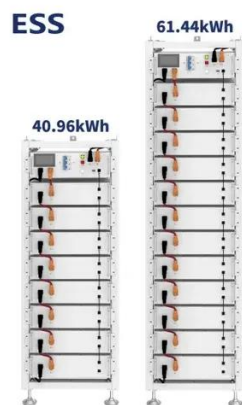
Solar Power per Square Meter Calculator

A solar power per square meter calculator takes details regarding these factors and then gives the accurate output generated by the solar panel per square meter.

MANY Definition & Meaning



The meaning of MANY is consisting of or amounting to a large but indefinite number. How to use many in a sentence.



Solar Panel Output Per Square Meter

Discover how much electricity solar panels generate per square meter, explore efficiency factors, technology comparisons, and future innovations in photovoltaic energy.



Contact Us

For catalog requests, pricing, or partnerships, please visit:

<https://www.firmaskrzypek.pl>

Phone: +48 22 426 71 90

Email: info@firmaskrzypek.pl

Scan the QR code to access our WhatsApp.

