



# How many square meters is one ton of solar glass





## Overview

---

2mm PV glass yields about 125 m<sup>2</sup> per ton, actual values vary based on thickness and composition. As solar technology evolves, understanding these metrics becomes crucial for efficient project planning and cost management in the renewable energy sector. Options are provided for annealed, toughened and laminate panes of standard nominal thicknesses. The. A weight box of glass is about 50 kg heavy and 1 tons of glass is 20 weight boxes. 02 divided by thickness to get the thickness of the glass a heavy box how many squares. For example, the square of a 10mm glass. Max. Glass Size Contact Us | Terms of Use Copyright © 1989 - 2020 Xinology Co. 51 grams per cubic centimeter of volume. By multiplying this weight by 2. Let's break down the variables: Panel type: Monocrystalline vs.



## How many square meters is one ton of solar glass



### [How many solar glass tubes are there in one ton? , NenPower](#)

Assessing the inquiry regarding the quantity of solar glass tubes in one ton elucidates an array of intricacies associated with their manufacturing and environmental effects. The average count ...

### Glass Weight Calculator

Efficiently calculate glass weights with our Glass Weight Calculator. Shop premium glass products. Simplify project planning with accurate measurements.



### Solar Glass

Glass Size. Contact Us , Terms of Use Copyright © 1989 - 2020 Xinology Co., Ltd. All Rights Reserved.



1075KWHH ESS

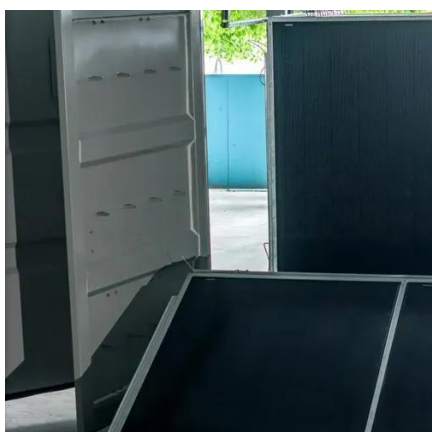
### Glass weight calculator

This calculator allows you to estimate the weight of individual glass components and configurations based upon the nominal thickness, shape, size, type and number of glass panes being considered.



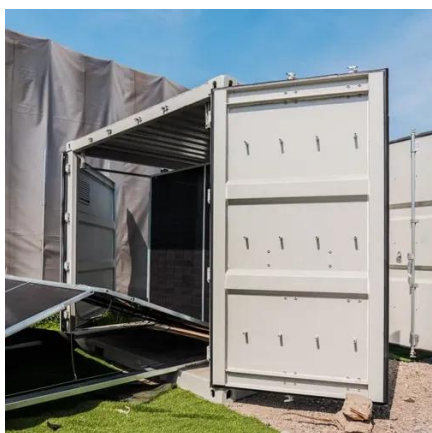
## CrystalEdge

( [Click here to download a PDF of this document]  
([https://%20GenInfo%20 ...](https://%20GenInfo%20...)



## Glass Calculators -- NYC All Glass

Use this calculator to find the square footage, square yards, square meters or acres for a building, home, garden or construction project. Estimate material quantity and total square footage ...



## [How Many Tons of Photovoltaic Glass Do You Need for Solar Projects](#)

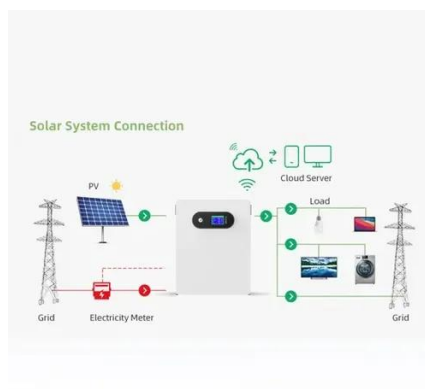
Learn how to calculate photovoltaic glass requirements for residential, commercial, and utility-scale projects. Get data-driven insights and industry best practices below.

## Method of calculating the weight of



## glass

Just use 0.02 divided by thickness to get the thickness of the glass a heavy box how many squares. For example, the square of a 10mm glass weight box is:  $0.02/0.01 = 2$  squared, and so on.

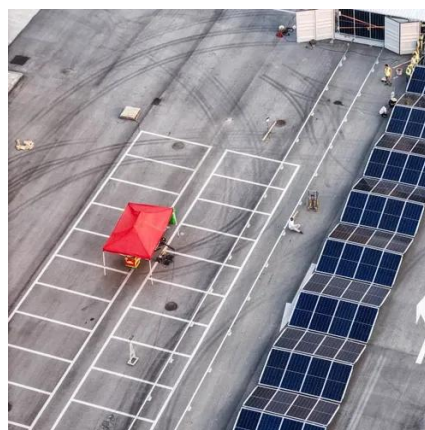


## [How Many Square Meters is One Ton of Photovoltaic Glass A ...](#)

While standard 3.2mm PV glass yields about 125 m<sup>2</sup> per ton, actual values vary based on thickness and composition. As solar technology evolves, understanding these metrics becomes crucial for efficient ...

## Glass Weight Calculator

Find the weight of any volume of glass material made from the most common glass types in production today using this glass weight calculator.





## Contact Us

---

For catalog requests, pricing, or partnerships, please visit:

<https://www.firmaskrzypek.pl>

Phone: +48 22 426 71 90

Email: [info@firmaskrzypek.pl](mailto:info@firmaskrzypek.pl)

Scan the QR code to access our WhatsApp.

