



# How many tons does a wind turbine duct weigh





## Overview

---

A typical utility-scale wind turbine tips the scales at 200-400 tons total. That's right – each one weighs about as much as a small fleet of commercial airplanes. The average weight of a wind turbine is about 200 tons in total, with the blades weighing about 35 tons, the tower at around 70 tons, and the gear box weighing each container up to 20 metric tons. General Electric uses a modular tower design concept, allowing for different hub heights to require. How much do wind turbines weigh?

In the GE 1. Wind turbines represent a significant investment in renewable energy.



## How many tons does a wind turbine duct weigh



### How Much Does a Wind Turbine Weigh?

The weight of a wind turbine varies considerably, but a typical modern utility-scale wind turbine can weigh between 164 tons (328,000 lbs) and 340 tons (680,000 lbs) or more, depending on ...

### How Much Does a Wind Turbine Weigh? Full Breakdown

Understanding the weight of a wind turbine extends beyond mere numbers; it weaves into the very fabric of renewable energy's capability to transform our energy landscape. A typical wind ...



### How Much Does a Wind Turbine Weight: Technical ...

On average, a typical utility-scale wind turbine can weigh anywhere from 100 to 250 tons.

### How Much Does A Wind Turbine Weight , Luxwisp

On average, a wind turbine weighs anywhere from 40 to 50 tons. This weight is divided between the rotor, the generator, the gearbox, the tower, and the foundation. A larger turbine will ...



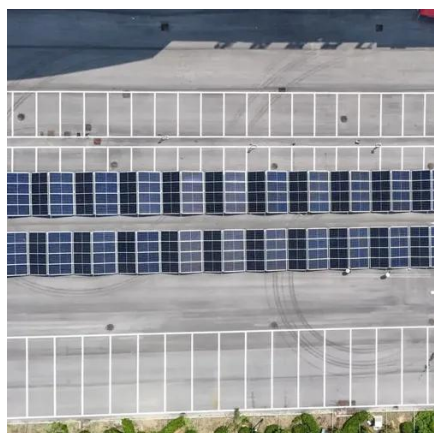
## How Much Does a Wind Turbine Weigh?

When it comes to wind turbines, size matters - and these giants of renewable energy pack some serious weight. A typical utility-scale wind turbine tips the scales at 200-400 tons total. ...



## Wind Turbine Component Delivery Vehicles

Components weights are for a typical 3.x wind turbine with 137m rotor and 110m hub height. Nacelle weight assumes generator and gearbox are shipped with the nacelle. For some wind turbine models ...



## [How Heavy Is a Wind Turbine? Breaking Down the Weight](#)

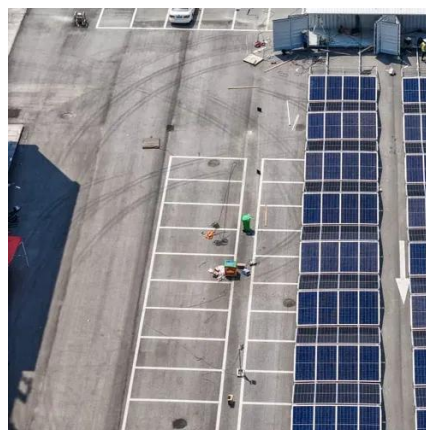
The mass of a commercial wind turbine varies significantly, ranging from hundreds to thousands of metric tons, depending primarily on its power output. A typical modern onshore turbine, rated in the 2 ...

## How Much Does A Wind Turbine



## Weigh In Tons?

The average weight of a wind turbine is about 200 tons in total, with the blades weighing about 35 tons, the tower at around 70 tons, and the gear box weighing each container up to 20 ...



## [National Wind Watch , Size of Industrial Wind Turbines](#)

In the GE 1.5-megawatt model, the nacelle alone weighs more than 56 tons, the blade assembly weighs more than 36 tons, and the tower itself weighs about 71 tons -- a total weight of 164 tons.

## [National Wind Watch , Size of Industrial Wind Turbines](#)

When it comes to wind turbines, size matters - and these giants of renewable energy pack some serious weight. A typical utility-scale wind turbine tips the scales at 200-400 tons total. ...



## How Heavy Are Wind Turbines

Wind turbine blade weights vary, averaging around 5 tons, but some can reach up to 20 tons, impacting transport and installation processes.



## Contact Us

---

For catalog requests, pricing, or partnerships, please visit:

<https://www.firmaskrzypek.pl>

Phone: +48 22 426 71 90

Email: [info@firmaskrzypek.pl](mailto:info@firmaskrzypek.pl)

Scan the QR code to access our WhatsApp.

