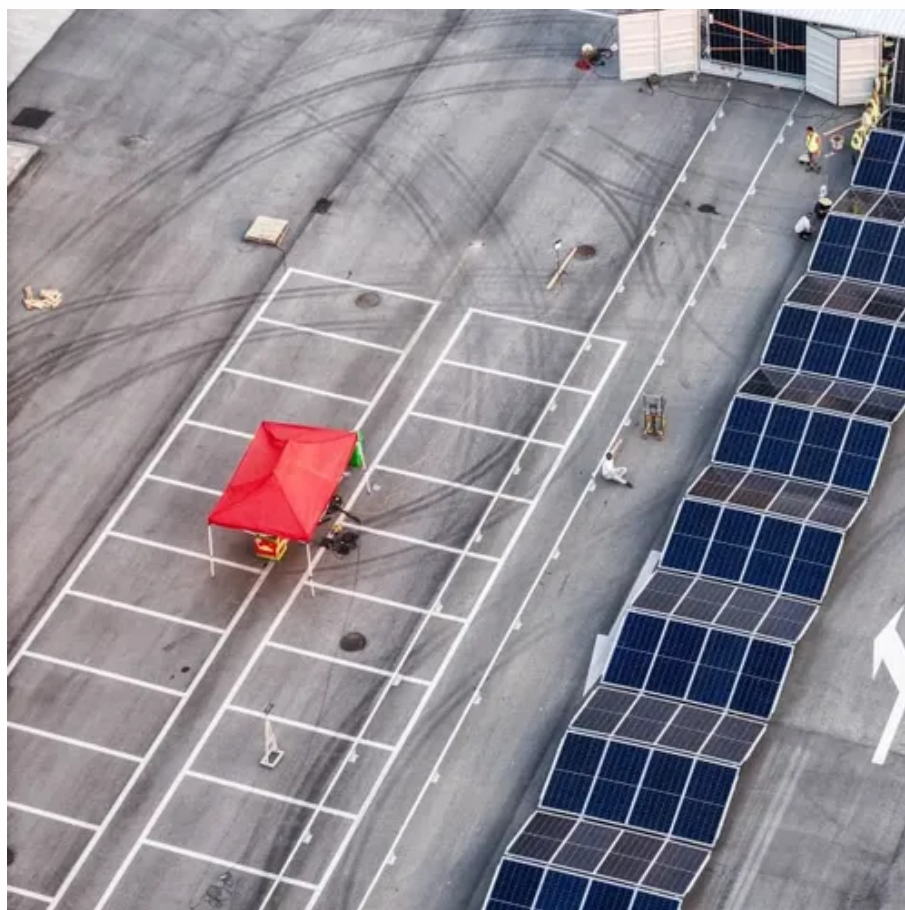




How many watts does a European solar inverter have





Overview

In typical residential installations, inverters are generally rated between 1,000 watts to 7,000 watts, catering to average household energy consumption requirements. The power rating of a solar inverter is contingent on various factors, including its design, intended application, and the specific solar power system it supports. The inverter wattage must be the same or greater than. The inverter converts the direct current (DC) electricity generated by your solar panels into alternating current (AC) that powers your home appliances. For example, a 5 kW solar array typically requires a 5 kW. Consequently, inverter sizes vary greatly. This guide explores common wattage requirements for residential, commercial, and industrial systems while explaining how to choose the right inverter power for solar energy storage, backup systems, and off-grid. A single solar inverter can deploy about 40 watts when it is not working or at night. This illustrates how significant it is to know about power use.



How many watts does a European solar inverter have



How Much Power Does a Solar Inverter Need

Solar inverter or photovoltaic inverter is a power inverter that can easily convert direct current to AC. Returning to the solar inverter power needs, it is around 10-25 W, and its efficiency ...

[Solar Inverter Sizing Guide: How to Size Your Inverter](#)

Learn how to properly size your solar inverter with our complete guide. Discover the optimal DC-to-AC ratio and avoid costly sizing mistakes.



European specifications for photovoltaic inverters

This European Standard provides a procedure for the measurement of the efficiency of the maximum power point tracking (MPPT) of inverters, which are used in grid-connected

[What Size Solar Inverter Do You Need for Solar Panels? Explained](#)

Ideally, the inverter's capacity should match the DC rating of your solar array. For example, a 5 kW solar array typically requires a 5 kW inverter. However, factors like derating, future ...



[How many watts does a solar inverter have? , NenPower](#)

In typical residential installations, inverters are generally rated between 1,000 watts to 7,000 watts, catering to average household energy consumption requirements. For commercial ...



Solar Inverter Size Chart

Ideally, the inverter's capacity should match the DC rating of your solar array. For example, a 5 kW solar array typically requires a 5 kW inverter. ...



Solar Inverter Size Chart

The inverter wattage must be the same or greater than your solar panel's watts. Here is a chart that shows the watts consumption of various appliances and what inverter size you will need.



[How Much Power Does Solar Inverter Use](#)



[and How to Create the ...](#)

Learn how much power a solar inverter uses and get practical tips on designing the ideal solar power project. From understanding inverter efficiency to system sizing, this guide will help you

...



The Only Inverter Size Chart You'll Ever Need

During our research, we discovered that most inverters range in size from 300 watts up to over 3000 watts. In this article, we guide you through the different inverter sizes.

[How many watts are enough for European photovoltaic inverters](#)

Calculating Solar PV String Size - A Step-By-Step Guide One aspect of designing a solar PV system that is often confusing, is calculating how many solar panels you can connect in series



[How Many Watts Does an Inverter Usually Have? A Practical Guide ...](#)

This guide explores common wattage requirements for residential, commercial, and industrial systems while explaining how to choose the right inverter power for solar energy storage, backup systems, ...



Contact Us

For catalog requests, pricing, or partnerships, please visit:

<https://www.firmaskrzypek.pl>

Phone: +48 22 426 71 90

Email: info@firmaskrzypek.pl

Scan the QR code to access our WhatsApp.

