



How many watts is a 30cm30cm solar panel





Overview

These panels typically produce between 350-450 watts and are ideal for most home installations due to their manageable size and weight. Example: 5kW solar system is comprised of 50 100-watt solar panels. Alright, your roof square footage is 1000 sq ft. Can you put a 5kW solar system on your roof?

For that, you will need to know what size is a typical 100-watt solar panel, right?

To bridge that gap of very useful knowledge needed. Definition: This calculator estimates the physical size of solar panels based on their wattage rating and power density. How Does the Calculator Work?

The. How many watts is a 400W solar panel?

The number in the panel's name is its rated wattage. But remember, that's under test conditions. Think of it like a car's fuel rating it shows potential, not. The fundamental formula for calculating solar panel wattage is: $Wattage = Voltage \times Current$ When applied to solar panels, this can be expressed as: $Solar\ Panel\ Wattage = V_{mp} \times I_{mp}$ Where: V_{mp} represents the voltage at maximum power point, indicating the optimal voltage level at which the panel. This solar panel wattage calculator allows you to calculate the recommended solar panel wattage according to the energy consumption of your household appliances., eight 375W panels) covering about 14-18.



How many watts is a 30cm30cm solar panel

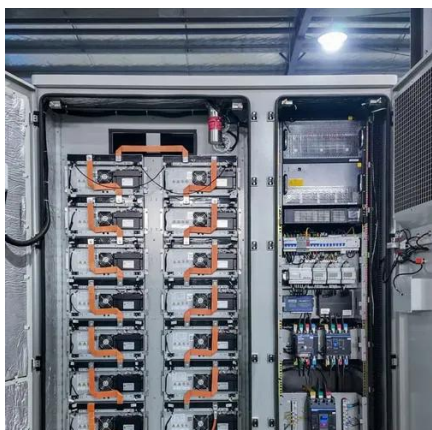


Solar Panel Size Calculator by Wattage

Definition: This calculator estimates the physical size of solar panels based on their wattage rating and power density. Purpose: It helps solar installers, engineers, and homeowners determine how much ...

Solar Panel Wattage Calculator

This calculator considers variables such as panel efficiency, sunlight intensity, and environmental conditions, allowing for a more accurate prediction of the electricity a solar panel can generate.



[Solar Panel Size and Wattage Chart: Standard Sizes & Uses for Each](#)

At the present time that figure is between 17-21 due to the wattage of the solar panels. Industry experts are striving to design more powerful solar panels to reduce the number of panels ...

[The Ultimate Guide to Solar Panel Size, Weight & Wattage \(2025\)](#)

Standard residential solar panels are typically around 5.8 feet long by 3.5 feet wide and weigh between 40 to 50 pounds. However, the exact dimensions depend heavily on the panel's ...



Solar Panel Power Calculator by Size

The Solar Panel Power is approximately 313.4 W.



Solar Panel Sizes and Wattage Explained

Moreover, solar panel size per kW and watt calculations are estimates that may vary depending on panel efficiency, shading, and orientation. For specific sizing and installation ...



[Standard Solar Panel Sizes And Wattages \(100W-500W Dimensions\)](#)

To bridge that gap of very useful knowledge needed, we have compared and averaged the sizes of 100-watt to 500-watt solar panels available on the market. The goal here is to get to the average solar ...



Solar Panel Wattage Calculator



How do you calculate solar panel wattage needed? The math is simple. First, you find your daily energy use in watt-hours. Then, you divide it by the number of peak sun hours in your area. Finally, you ...

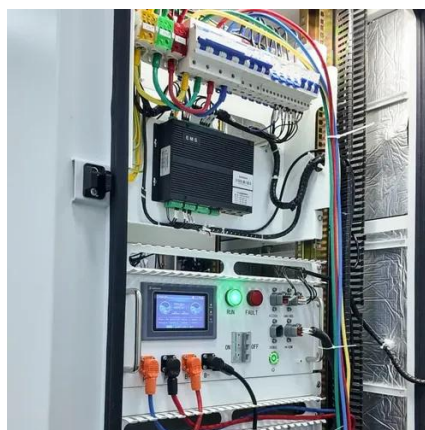


[How many watts is a 30cm30cm solar panel , EQACC SOLAR](#)

The wattage of the solar panels, in this case, is crucial in determining the overall capacity of the system. Your system may consist of 20x330W panels, resulting in a 6,600W (6.6kW) solar PV system.

Solar Panel Wattage Calculator

This solar panel wattage calculator allows you to calculate the recommended solar panel wattage according to the energy consumption of your household appliances.





Contact Us

For catalog requests, pricing, or partnerships, please visit:

<https://www.firmaskrzypek.pl>

Phone: +48 22 426 71 90

Email: info@firmaskrzypek.pl

Scan the QR code to access our WhatsApp.

