



# How many watts of electricity does a communication base station normally use





## How many watts of electricity does a communication base station nor

---



### [Human Exposure to Radio Frequency Fields: Guidelines for Cellular](#)

Although the FCC permits an effective radiated power (ERP) of up to 500 watts per channel (depending on the tower height), the majority of cellular or PCS cell sites in urban and ...

### [Measurements and Modelling of Base Station Power Consumption ...](#)

Base stations represent the main contributor to the energy consumption of a mobile cellular network. Since traffic load in mobile networks significantly varies during a working or weekend day, it is ...



### **Base stations and networks**

The antenna output power level is typically between 20 watts and a few hundred watts for an outdoor base station. Television transmitters, by comparison, have 10-1000 times higher output power than ...

### [Energy-Efficient Base Stations , part of Green Communications](#)

The impact of the Base Stations comes from the combination of the power consumption of the equipment itself (up to 1500 Watts for a nowadays macro base station) multiplied by the number of ...



## Power Base Station

Maximum base station power is limited to 24 dBm output power for Local Area base stations and to 20 dBm for Home base stations, counting the power over all antennas (up to four).

## How much power does a cell tower consume?

To provide output on Antenna, you have a MacroNodeB at the base station which communicates to your mobile via the Antenna. This is rated at 150W. It would need another 50W to ...



## How much power does a cell tower consume?

To provide output on Antenna, you have a MacroNodeB at the ...



## [Electricity consumption of communication](#)



## network base stations

This paper investigates changes in the power consumption of base stations according to their respective traffic and develops a model for the power consumption as per traffic generated

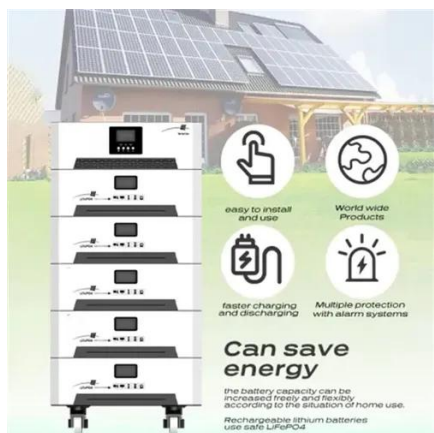


## **ICNIRP , Base Stations**

Over large distances, the signals must be relayed by a communication network comprising base stations and often supported by a wired network. The power of a base station varies (typically between 10 ...

## How many watts of electricity does a communication base station

The antenna output power level is typically between 20 watts and a few hundred watts for an outdoor base station. Television transmitters, by comparison, have 10-1000 times higher output power than ...



## Key Factors Affecting Power Consumption in Telecom Base Stations

Discover the key factors influencing power consumption in telecom base stations. Optimize energy efficiency and reduce operational costs with our expert insights.



## Contact Us

---

For catalog requests, pricing, or partnerships, please visit:

<https://www.firmaskrzypek.pl>

Phone: +48 22 426 71 90

Email: [info@firmaskrzypek.pl](mailto:info@firmaskrzypek.pl)

Scan the QR code to access our WhatsApp.

