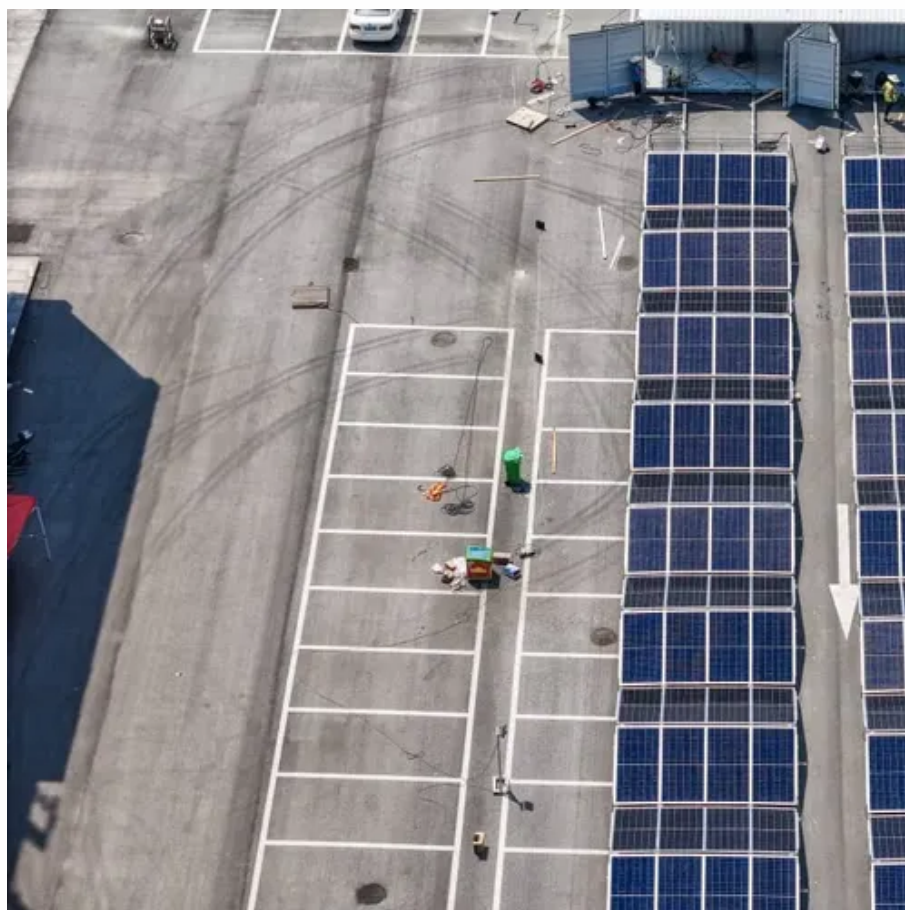




How many watts of solar energy can charge quickly



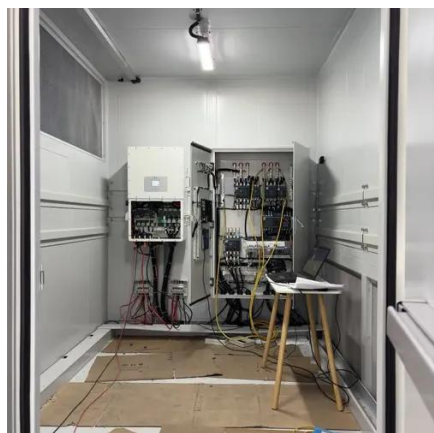


Overview

Solar Panel Output: Higher wattage panels generate more electricity. **Battery Capacity:** Larger batteries take longer to charge. **Influencing Factors:** Key factors like battery capacity, sunlight conditions, battery type, and temperature directly impact how fast a battery can be. A 200-watt solar panel can fully charge a 12-volt car battery in 5 to 8 hours under optimal sunlight conditions. Factor in 20-30% efficiency loss from heat, wiring, and controllers. **Panel.** Estimate how long it takes your solar panel to charge a battery based on panel wattage, battery capacity, voltage, and charge efficiency. **Formula:** Charging Time (h) \approx (Battery Ah \times V \times (Target SOC / 100)) \div (Panel W \times (Eff% / 100)). Adjust for sunlight hours to find daily charging duration.



How many watts of solar energy can charge quickly



[What Size Solar Panel To Charge 100Ah Battery? \(Calculator + Chart\)](#)

We will show you exactly how to calculate the solar panel wattage you need to charge a 100Ah battery. To make things even easier, we have created: 100Ah Battery Solar Size Calculator.

[Solar Panel Charging Calculations of a Battery \(Calculated\)](#)

Using a 100-watt solar panel to charge a 5-volt lithium-ion battery with a 12 Ah capacity will take 3.1 hours of direct sunshine to charge fully. Depending on the charging controller, the ...



Solar Battery Charge Time Calculator

Formula: Charge Time (hours) = Battery Capacity (Ah) / (Solar Panel Wattage * Solar Insolation * Panel Efficiency) For example, consider a battery of 100Ah capacity, a solar panel of ...

[How Fast Do Solar Power Banks Charge? The Surprising Truth](#)

Solar power banks offer a convenient way to charge devices using sunlight, but their charging speed depends on several factors like panel efficiency, sunlight intensity, and battery ...



- LiFePO₄ Battery, safety
- Wide temperature: -20~55°C
- Modular design, easy to expand
- The heating function is optional
- Intelligent BMS
- Cycle Life: > 6000
- Warranty: 10 years



[How to Calculate Charging Time of Battery by Solar Panel](#)

Panel wattage, sunlight hours, and battery size directly affect charge time. MPPT charge controllers boost efficiency, especially in low light. Clean panels, proper tilt, and correct cable size = ...



[Solar Panel Charging Time Calculator. Estimate Battery Charge ...](#)

Accurately calculate how long your solar panel takes to charge a battery using panel wattage, voltage, capacity (Ah), efficiency, and daily sunlight hours. Fast, reliable solar charging time calculator.



[How Fast Can a Solar Panel Charge a Battery: Tips to Maximize](#)

Discover how fast solar panels can charge batteries in this comprehensive guide. We break down the factors affecting charging speed, such as panel types, battery compatibility, and ...

[How Fast Do Solar Panels Charge](#)



[Batteries: Factors Influencing ...](#)

Discover how fast solar panels can charge batteries in our comprehensive guide! Learn about the factors influencing charging speed, including efficiency, battery capacity, and weather ...



[How Fast Can A Solar Panel Charge A Battery? Key Factors ...](#)

For example, a panel rated at 300 watts can charge a battery much more quickly than a 100-watt panel. The process begins with sunlight hitting the solar panel and generating electricity.

[How Long Does a Solar Panel Take to Charge? - zoupw](#)

For larger energy demands such as running appliances, lights, or charging multiple devices, ZOUPW's 450W foldable solar panel is a solid choice. ? These are ideal conditions: direct sunlight, no shade, ...





Contact Us

For catalog requests, pricing, or partnerships, please visit:

<https://www.firmaskrzypek.pl>

Phone: +48 22 426 71 90

Email: info@firmaskrzypek.pl

Scan the QR code to access our WhatsApp.

