



How many workstations does a communication base station inverter usually have





Overview

Central inverters, which are usually around several kW to 100 MW range. [pdf]. In the critical infrastructure of base stations, data centers, and communication systems, power reliability and quality are non-negotiable. The system is mainly used for the Grid-PV Hybrid solution in telecom base stations and machine rooms, as well as off-grid PV base stations, Wind-PV hybrid power base stations and Diesel. Built from exceptionally rugged components not available in regular commercial "of-the-shelf" inverterchargers. How to choose a base station?

Frequency: The base station should operate on a frequency that is compatible with the devices it will be communicating with. Common frequencies include 900 MHz, 1. The following are some specific applications of.



How many workstations does a communication base station inverter



Communication base station inverter area requirements

In order to better weave the underlying network of energy digitization and intelligent development, choose the most appropriate communication method according to local conditions.

The Importance of Pure Sine Wave Inverters in Base Stations, Data

Base Stations: Telecommunications base stations, typically employ -48VDC power systems. Pure sine wave inverters convert this DC power to AC to run monitoring equipment, climate ...



ESS



The role of the inverter cabinet in a communication base station

Why are base stations important in cellular communication? Base stations are important in the cellular communication as it facilitate seamless communication between mobile devices and the network ...

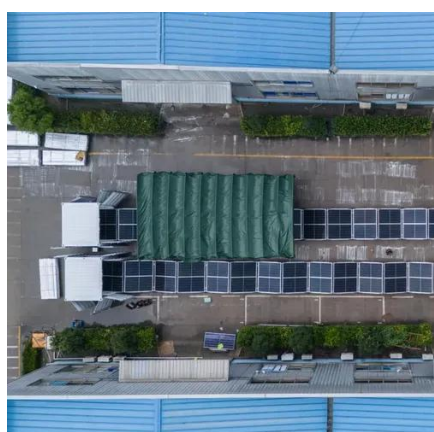
Communication base station inverter technology

Usually, each inverter is equipped with a GPRS/4G data collection module. Through the built-in SIM card, the collected data is uploaded to the inverter company's server through the wireless



Products and specifications of communication base station inverters

The system is mainly used for the Grid-PV Hybrid solution in telecom base stations and machine rooms, as well as off-grid PV base stations, Wind-PV hybrid power base stations and Diesel



COMMUNICATION POWER INVERTER BASE STATION INVERTER

The wind-solar-diesel hybrid power supply system of the communication base station is composed of a wind turbine, a solar cell module, an integrated controller for hybrid energy management for ...

- LiFePO₄ Battery,safety*
- Wide temperature: -20-55°C*
- Modular design, easy to expand*
- The heating function is optional*
- Intelligent BMS*
- Cycle Life:> 6000*
- Warranty:10 years*



What level is the inverter for a communication base station

How much power does a cellular base station use?A cellular base station can use anywhere from 1 to 5 kW power per hour depending upon the number of transceivers attached to the base station, the age ...

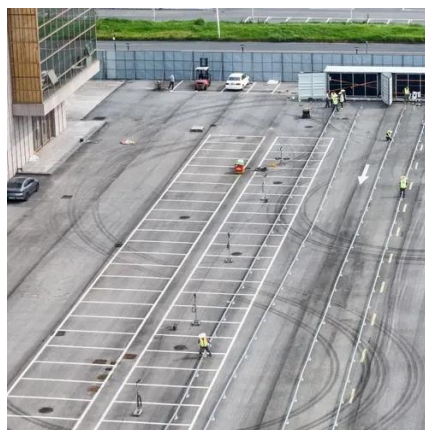


How many workstations does a



[communication base station inverter](#)

What is a base station in telecommunications? A base station is referred to a stationary transceiver used in telecommunications that serves as the primary hub for connectivity of wireless device ...



Communication Base Station Inverter Application

Base station type: Power requirements for small base stations typically range from a few hundred watts to several kilowatts. Larger base stations or those that support more users and data ...

[What is a Base Station? -- From Communication Core to Thermal ...](#)

Simply put, a base station (BS) is a wireless transceiver device in a mobile communication network that provides wireless coverage and communicates with mobile terminals ...





Contact Us

For catalog requests, pricing, or partnerships, please visit:

<https://www.firmaskrzypek.pl>

Phone: +48 22 426 71 90

Email: info@firmaskrzypek.pl

Scan the QR code to access our WhatsApp.

