



How much area does a 1000w solar cell require for photovoltaic power generation





Overview

1000 Watts = Total Area x 1000 Watts/m² x 0.56 m² | you are going to install all the panels in one line you would need a space of approximately 1 m x 5. The Solar Power Roof Area Calculator is a valuable tool designed to help users estimate the required roof area for installing solar panels. Accurate area estimation ensures optimal panel placement, maximizes energy harvest, and prevents shading or structural conflicts. Tip: Gross area = Net module area x Layout factor (accounts for. To determine the amount of area required for a solar energy system with a capacity of 1000 watts, several factors come into play. Location and solar irradiance, and 3.



How much area does a 1000w solar cell require for photovoltaic power



PVWatts Calculator

NREL's PVWatts[®] Calculator Estimates the energy production of grid-connected photovoltaic (PV) energy systems throughout the world. It allows homeowners, small building owners, installers and ...

[How much area does a 1000w solar cell require for ...](#)

the solar panel yield of a PV module of 250 Wp with an area of 1.6 m² is 15.6%. Be aware that this nominal ratio is given for standard test conditions (STC) : ra



[1000 Watt Solar Panel Systems: Everything You Need to Know](#)

The size of the solar battery will largely depend on the amount of power you wish to store and how much excess power the 1000w solar panel system is capable of producing.

[A Guide on Calculating Area Required for Solar Panel Installation](#)

Once you have estimated the number and size of solar panels you need, you have to determine the area required on your rooftop, backyard, or garden to install solar systems and enjoy ...



[Solar Power Roof Area Calculator , Roof Space Needed for a Solar ...](#)

The Solar Power Roof Area Calculator is a valuable tool designed to help users estimate the required roof area for installing solar panels. Its primary use is to determine how much space is ...



[Total Area Required for Solar Panel Installation Calculator](#)

Calculate the total area needed for your solar panel installation quickly and accurately with our easy-to-use solar panel area calculator.



[How much area is needed for solar panel installation](#)

To help you decide if your property is suitable for solar, this guide outlines roof space requirements and breaks down how to calculate the area needed for your home solar panel installation.



Solar Panel Calculator



To calculate how many solar panels a household needs to meet its electricity demand, you first need to know the household's average daily electricity consumption, the local average sunshine hours, and ...

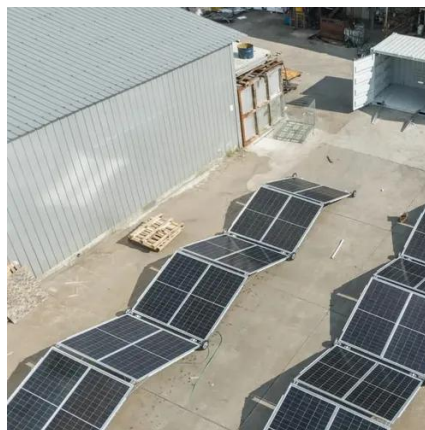


[How many square meters does solar energy 1000w cover?](#)

Thus, solar installations may need a varying area --from 5 to 8 square meters --to fulfill the 1000-watt requirement depending not only on the physical space they occupy but also on their ...

[How to Calculate the Surface Area Required by Solar Panels](#)

You have estimated the size of the solar system that you need and are ready to get the equipment from the market to install it. But wait, are you sure you have enough space in your garden ...





Contact Us

For catalog requests, pricing, or partnerships, please visit:

<https://www.firmaskrzypek.pl>

Phone: +48 22 426 71 90

Email: info@firmaskrzypek.pl

Scan the QR code to access our WhatsApp.

