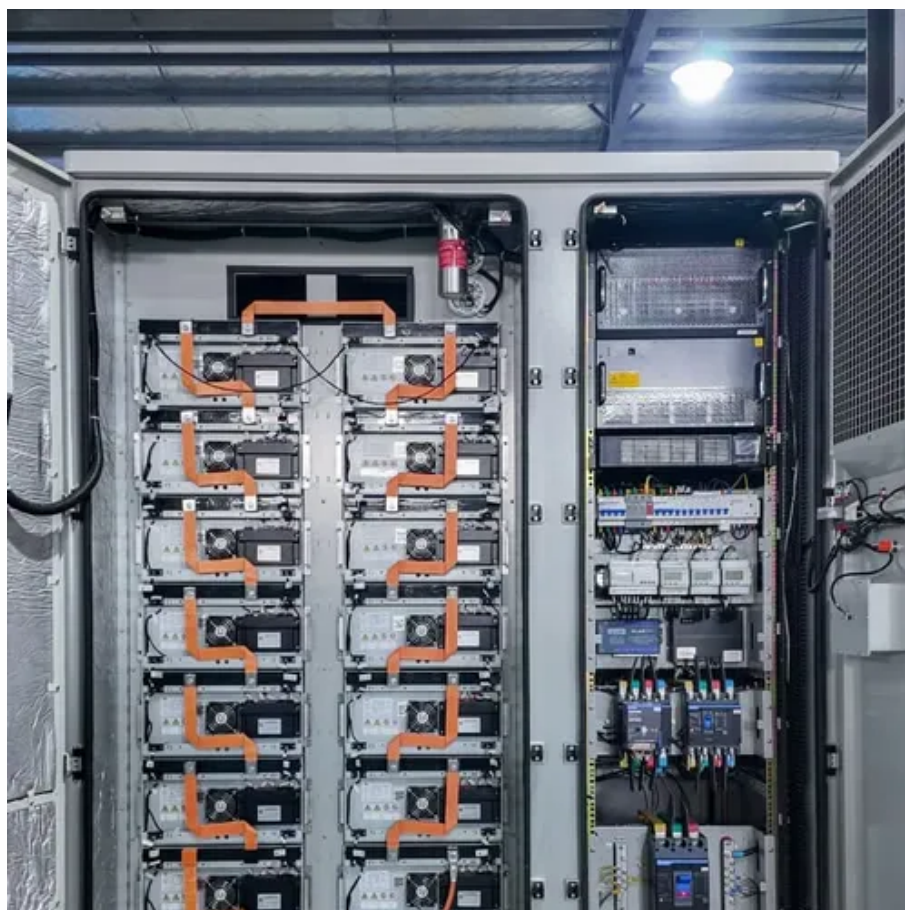




How much current does a wind generator generate in one round





Overview

Electricity generated from a single rotation of a wind turbine operating at optimal speed can range between 1 to 4 kWh, depending on the size of the turbine. 5-3 megawatts can produce in excess of 6 million kWh every year. The world's largest wind turbine is the Haliade-X 12 MW offshore turbine from General. Total annual U. utility-scale electricity generation. Utility scale includes facilities with at. Check the wind maps provided by National Renewable Energy Laboratory to learn whether wind speed and availability in your area makes wind energy a good choice for your home. Essentially, it converts the force of the wind into electrical power through a series of intricate mechanisms.



How much current does a wind generator generate in one round

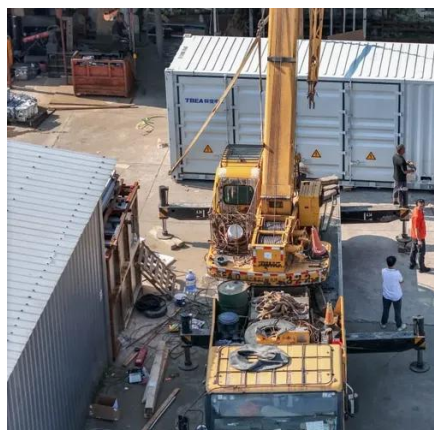


How Much Power Does A Wind Turbine Generate?

Most wind turbines are made up of rotor-mounted blades that resemble airplane propellers. When air blows through them, they cause the rotor to turn a shaft that powers an ...

How Do Wind Turbines Generate Electricity?

How do wind turbines generate electricity? They convert captured kinetic energy into electricity. One turbine can produce over 843,000 kWh monthly.



How Much Current Does A Wind Turbine Generate

How Much Power Does A Wind Turbine Produce In One Spin? Electricity generated from a single rotation of a wind turbine operating at optimal conditions can yield between 1 to 4 kWh, ...

How Much Electricity Can One Wind Turbine Generate

So, how much electricity can one wind turbine generate? The answer varies widely--from a few thousand kilowatt-hours annually for small residential units to millions for utility ...



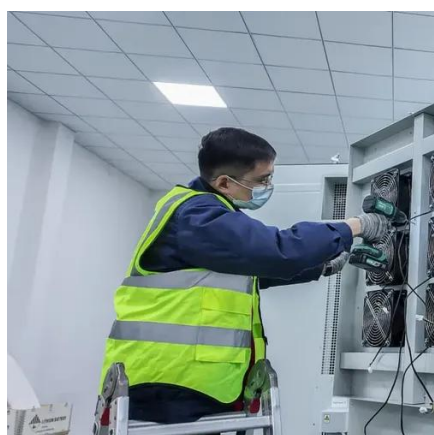
How Much Energy does a Wind Turbine Generate?

How much energy does a wind turbine produce in one turn? Most onshore wind turbines have a capacity of 2-3 megawatts (MW), which can produce 6 million kilowatt hours (kWh) of ...



Wind Turbine Power per Rotation: Key Insights 2025

Electricity generated from a single rotation of a wind turbine operating at optimal speed can range between 1 to 4 kWh, depending on the size of the turbine and the wind conditions. Modern ...



How Much Current Does a Wind Turbine Produce?

A single modern onshore wind turbine can typically generate anywhere from 1.5 to 3 MW-- enough to power approximately 500 to 1,000 homes. But what remains less discussed is how ...

Wind Energy Factsheet



Horizontal axis wind turbines (HAWT) are the predominant design, featuring blades (usually three) symmetrically mounted to a hub connected via a shaft to a gearbox and generator.

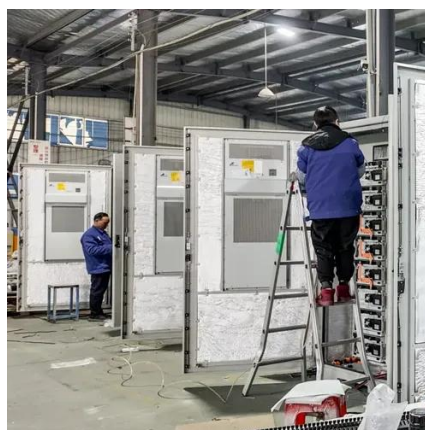


Wind blades generate how much electricity per revolution?

It takes about 4-5 seconds for the wind turbine to make one revolution (but at this time, the wind blade tip speed can reach more than 280 kilometers per hour, which is comparable to high-speed rail), and ...

Electricity generation from wind

Total annual U.S. electricity generation from wind energy increased from about 6 billion kilowatt-hours (kWh) in 2000 to about 434 billion kWh in 2022. In 2022, wind turbines were the source ...





Contact Us

For catalog requests, pricing, or partnerships, please visit:

<https://www.firmaskrzypek.pl>

Phone: +48 22 426 71 90

Email: info@firmaskrzypek.pl

Scan the QR code to access our WhatsApp.

