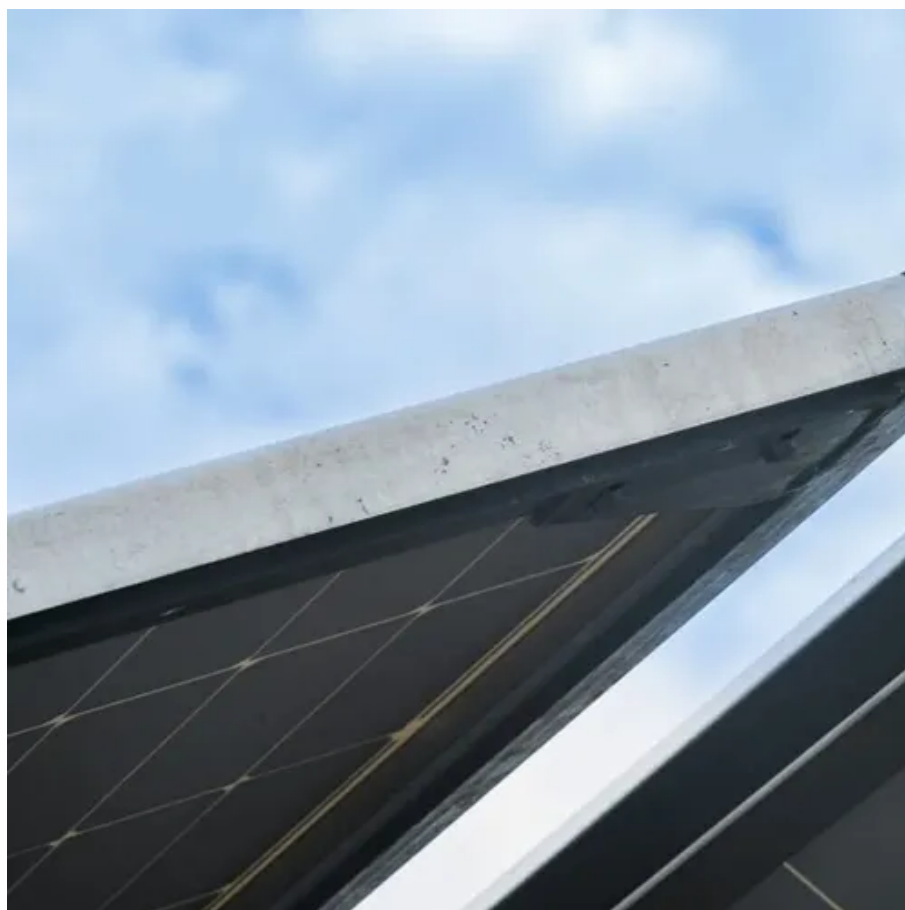




# How much is the photovoltaic panel load in the factory





## Overview

---

Suppose your factory operates at a load of 300 kW for 10 hours. Your daily energy consumption becomes:  $300 \times 10 = 3000$  kWh (or 3,000 units) Solar sizing depends primarily on your daily and monthly kWh consumption and how much of it occurs during sunlight hours. These pack punch for big needs. 72-cell: Standard for commercial. Cuts losses from shade or dirt. A 72-cell might. How much solar power does my facility actually need?

Sizing a solar plant isn't guesswork. A perfectly sized solar system requires a detailed understanding of consumption patterns, roof. A photovoltaic panel factory requires more than just buying equipment and connecting it to power. The difference between a functional facility and a profitable one comes down to facility design, workflow optimization, and selecting equipment that won't become obsolete when cell technology shifts. If you run a warehouse, processing unit, or manufacturing shop, switching to solar can drastically reduce your power costs. A typical 50 kW solar system, with about 125 panels, can produce 6,000 to 9,000 kWh per month. These manufacturing cost analyses focus on specific PV and energy storage technologies—including crystalline silicon, cadmium telluride, copper indium.



## How much is the photovoltaic panel load in the factory



### [Commercial Solar Panel Cost: The Ultimate 2025 Guide for Businesses](#)

Commercial solar panels are photovoltaic systems installed on business properties to generate electricity or heat. Unlike residential panels, commercial systems tend to be larger, with capacities ...

### [A Complete Guide to Sizing Solar Panels for Factory Use](#)

Learn to size solar panels for your factory. Cut costs, boost efficiency, and ensure reliable power with our complete industrial guide.



### **Solar Panel Calculator for System Sizing**

Calculate your solar panel requirements effortlessly. Our Solar Panel Calculator helps you size your system correctly.

### [How Many Solar Panels Does a 50,000 Sq Ft Factory Need? A ...](#)

Managing a 50,000 sq ft factory brings steep power expenses and increasing demands to achieve eco-friendly objectives. Solar panels deliver a savvy, budget-friendly answer. Yet, a ...



**TAX FREE**

**Product Model**  
HJ-ESS-215A(100KW/215KWh)  
HJ-ESS-115A(50KW 115KWh)

**Dimensions**  
1600\*1280\*2200mm  
1600\*1200\*2000mm

**Rated Battery Capacity**  
215KWH/115KWH

**Battery Cooling Method**  
Air Cooled/Liquid Cooled

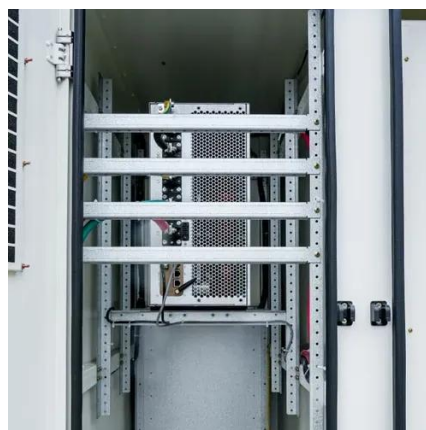


## [Photovoltaic Panel Factory Setup Guide , Ecoprogetti](#)

Photovoltaic Panel Factory: From Concept to Full Production A photovoltaic panel factory requires more than just buying equipment and connecting it to power. The difference between a ...

## [How Much Solar Power Does Your Factory Need? A short, easy ...](#)

Learn how factories can determine the right solar capacity with a step-by-step guide covering energy consumption, roof feasibility, shadows, structural load, orientation, water needs, and ...



## [How to Size a Factory Solar System Properly , thlinksolar](#)

thlinksolar explains how to size a commercial solar system accurately for warehouses and factories to maximize ROI.



## [How Much Energy Can a Commercial](#)



## [Solar Panel Produce for Your ...](#)

Commercial solar panels generally churn out between 250 to 600 watts each. In a perfect world, with sunshine all day long, a single 400-watt panel might give you 2 to 3 kWh daily. If you're ...



## [Solar Panel System Sizing for Commercial and Industrial Applications](#)

Sizing a solar panel system for commercial and industrial applications requires a comprehensive approach that considers energy consumption, solar resources, space constraints, ...

## [Solar Manufacturing Cost Analysis , Solar Market Research](#)

NLR analyzes manufacturing costs associated with photovoltaic (PV) cell and module technologies and solar-coupled energy storage technologies.





## Contact Us

---

For catalog requests, pricing, or partnerships, please visit:

<https://www.firmaskrzypek.pl>

Phone: +48 22 426 71 90

Email: [info@firmaskrzypek.pl](mailto:info@firmaskrzypek.pl)

Scan the QR code to access our WhatsApp.

