



# How much is the working current of photovoltaic panels





## Overview

---

Some key points about current for solar panels: Short Circuit Current ( $I_{sc}$ ): The maximum current your panel can produce in perfect conditions. Maximum Power Voltage ( $V_{mp}$ ): This is the voltage at which your panel operates most efficiently. If voltage is pressure, current (measured in amps) is the flow rate. This knowledge forms the foundation for determining the best PV system configuration for any given application. Environmental factors such as sunlight intensity and temperature play crucial roles in this performance metric. The technology of the solar. A photovoltaic (PV) cell, commonly called a solar cell, is a nonmechanical device that converts sunlight directly into electricity. These photons contain varying amounts of. Solar energy systems rely on photovoltaic (PV) panels to convert sunlight into electricity, but how much current can you realistically expect from a square meter of solar panels?

This article breaks down the factors affecting current output, industry benchmarks, and real-world applications to help. The amount of electricity the panel produces depends on the size of the panel, the intensity of the sunlight, and the circuit it's connected to. Generally speaking, a larger panel generates more electricity than a smaller one, but this doesn't necessarily mean it generates a higher current.



## How much is the working current of photovoltaic panels



### [Understanding Solar Panel Specifications: Voltage, Current, and Power](#)

Solar panels differ in voltage: Current: This is like the amount of water flowing through the hose. It's measured in amps (A). More amps mean more electricity flowing. Power: This is how much ...

### [How much current does the solar panel reach? , NenPower](#)

The amount of electric current generated by solar panels depends on their peak power (measured in watts), usually given at standard test conditions (STC). The formula to calculate current ...



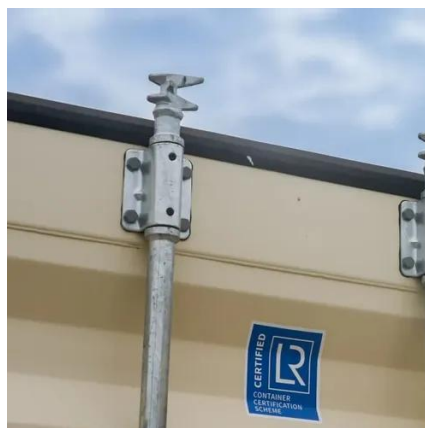
### [How Much Current Does a Square Meter of Photovoltaic Panel Have?](#)

Understanding current output per square meter helps in designing efficient solar systems. While typical commercial panels produce 6-8A/m<sup>2</sup> under optimal conditions, actual performance depends on ...



### [Understanding the Current Output of 500W Photovoltaic Panels](#)

A 500W solar panel doesn't constantly pump out 500 watts like a faucet - its output dances with sunlight intensity and environmental conditions. The magic happens at Standard Test Conditions (STC): ...



## Photovoltaics and electricity

PV cells generate direct current (DC) electricity. DC electricity can be used to charge batteries that power devices that use DC electricity. Nearly all electricity is supplied as alternating ...



## How Does Solar Work?

Below, you can find resources and information on the basics of solar radiation, photovoltaic and concentrating solar-thermal power technologies, electrical grid systems integration, and the non ...



## Photovoltaics and electricity

Photovoltaic Cells Convert Sunlight Into Electricity  
The Flow of Electricity in A Solar Cell  
PV Cells, Panels, and Arrays  
PV System Efficiency  
PV System Applications  
History of PV Systems  
The efficiency that PV cells convert sunlight to electricity varies by the type of semiconductor material and PV cell technology. The efficiency of commercially available PV panels averaged less than 10% in the mid-1980s, increased to around 15% by 2015, and is now approaching 25% for state-of-the art modules. Experimental PV cells and PV cells for See more on [eia.gov](http://eia.gov) Published: Oct





1, 2024glashaus.cc

## How Much Current Does a Square Meter of Photovoltaic Panel Have?

Understanding current output per square meter helps in designing efficient solar systems. While typical commercial panels produce 6-8A/m<sup>2</sup> under optimal conditions, actual performance depends on ...

### [Relationship between voltage and current of photovoltaic panels](#)

Overview: The field performance of photovoltaic "solar" panels can be characterized by measuring the relationship between panel voltage, current, and power output under differing environmental ...



### [Solar Panel Amps Calculator: What's a Panels Current?](#)

This solar panel amps calculator helps you find the current of your solar panels. We also give you insight into Ohm's Law and how to read your panel's specs.

## Understanding Current, Loads & Power Generation

In this post, we'll briefly look into the types of electrical current, the various loads we need to power, and how photovoltaic (PV) modules generate electricity. This knowledge forms the foundation for ...





## Understanding Solar Panel Voltage and Current Output

Short Circuit Current ( $I_{sc}$ ): The maximum current your panel can produce in perfect conditions.

Maximum Power Current ( $I_{mp}$ ): The current at your panel's most efficient operating point. You'll

...





## Contact Us

---

For catalog requests, pricing, or partnerships, please visit:

<https://www.firmaskrzypek.pl>

Phone: +48 22 426 71 90

Email: [info@firmaskrzypek.pl](mailto:info@firmaskrzypek.pl)

Scan the QR code to access our WhatsApp.

