



How much power does a 10 000 kilowatt inverter have





How much power does a 10 000 kilowatt inverter have



48V 100Ah

[What Can a 10000-Watt Generator Run and How Much It Cost](#)

A 10000-watt inverter generator falls into the category of large generators and can run several large appliances, such as heaters, several lights, well pumps, sump pumps, refrigerators, air conditioners, ...

What Can a 10KW Inverter Run?

At its core, a 10 KW inverter delivers up to 10,000 watts of continuous power, with many models offering surge capacities of 15-20 KW for brief periods to handle startup loads from motors or ...



What Will a 10000W Inverter Run?

We have created a comprehensive inverter size chart to help you select the correct inverter to power your appliances.

What Will a 10000W Inverter Run?

With a continuous watt capacity of 10000 watts and surge limit of 20000 watts, this inverter can run just about every appliance, power tool or device. The only limitation is how many of these you can load ...



The Only Inverter Size Chart You'll Ever Need

We have created a comprehensive inverter size chart to help you select the correct inverter to power your appliances.

10000 Watt DC Solar Inverters

The Fortress Power Envy 10 is an easy to install and all-in-one 10,000 watt (10kW), 120V - 240Vac and 97.5% efficiency, inverter solution for grid-tied or stand-alone solar power generation for homes or ...



[10kw solar inverter - 10000w grid tie solar inverter \[2025 Updated\]](#)

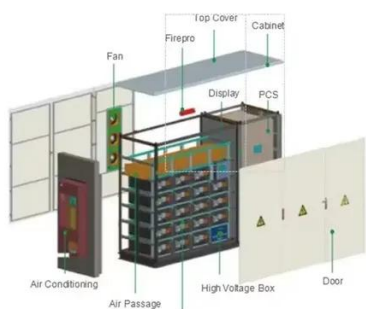
Yes, a 10kW inverter is typically sufficient for homes using 40-50 kWh of electricity daily, especially in sun-rich regions. It can also be used in small businesses, farms, or multi-unit dwellings ...

What Size Inverter For 10kw Solar



System?

What Size Inverter For 10kw Solar System: For a 10kW solar system, you typically need an inverter with a capacity of around 10,000 to 13,000 watts to handle the output efficiently. Let's explore more how ...

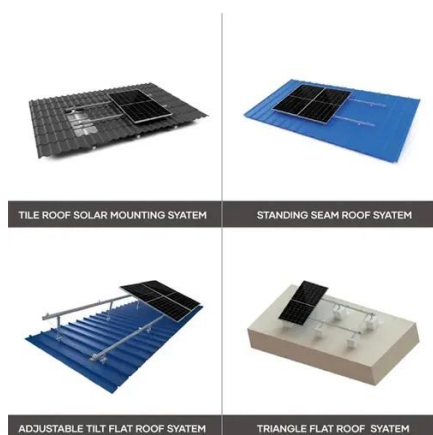


What Size Inverter Do I Need?

Finding the proper inverter size for your needs is as simple as adding together the necessary wattages of the items that you're looking to power.

[10kW Inverters: Complete Guide To Choosing & Installing \(2025\)](#)

Most residential 10kW inverters provide 120V/240V split-phase output, delivering both standard household voltage (120V) and high-voltage power (240V) for large appliances. Commercial ...



[Understanding the 10000W Inverter - Power, Performance, and ...](#)

Explore the power of a 10000W inverter, learn the difference between kilowatt vs kVA, and find the best setup for your home or solar system.



Contact Us

For catalog requests, pricing, or partnerships, please visit:

<https://www.firmaskrzypek.pl>

Phone: +48 22 426 71 90

Email: info@firmaskrzypek.pl

Scan the QR code to access our WhatsApp.

