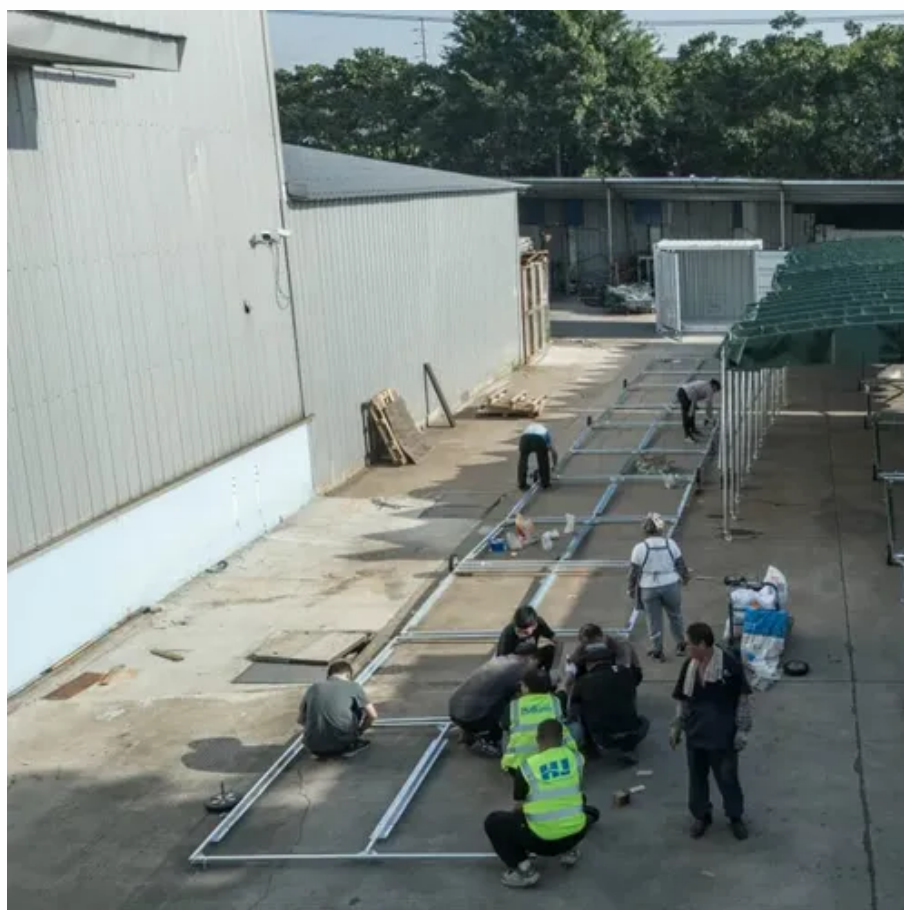




How often should the photovoltaic combiner box be inspected





Overview

Check your solar combiner box every six months. Wear safety gear to stop accidents from happening. How often should you inspect your solar combiner box?

What tools do you need for maintenance?

Can you clean the inside of the combiner box yourself?

What are signs that you need a professional?

Why is labeling important in a solar combiner box?

Taking care of your solar combiner box keeps your. A faulty solar combiner box can lead to arc faults, fire hazards, system downtime, and costly warranty claims. For inspectors, engineers, and Authority Having Jurisdiction (AHJ) personnel, navigating the overlapping requirements of UL and IEC standards presents a persistent challenge. UL 1741. To maintain a photovoltaic combiner box properly, perform visual inspections every 6-12 months, check electrical connections with calibrated torque tools 1, conduct thermography scanning under load, verify enclosure integrity 2, inspect fuses and their holders, clean internal components, check. We do a lot of solar PV and renewable energy asset inspections here at HelioVolta and SolarGrade! Every time we visit a site, we use the SolarGrade platform to guide our workflow and document our findings. Missing/Improper Label Improper labeling can be a risk to personnel and should conform to. When your solar system underperforms, the real culprit is often the solar combiner box—leading to energy loss, safety risks, and costly repairs. For small to medium projects, this represents a significant financial impact that extends far beyond the direct monetary loss.



How often should the photovoltaic combiner box be inspected



[Solar Combiner Box Inspection Checklist: UL & IEC Guide](#)

When evaluating solar combiner boxes for approval, always verify that documentation matches installed equipment, that all safety labeling is present and legible, and that electrical testing ...

Photovoltaic combiner box inspection

PV Combiner Boxes can offer DC OFF switches and/or fuses that disconnect the array from the PV inverter. These help to manage the safety conditions of the array during periods of maintenance (like ...



Solar Combiner Box Maintenance Guide

Any combiner box with less than IP65 rating invites trouble in outdoor environments. Once moisture penetrates the enclosure, corrosion, short circuits, and complete component failure ...

Combiner Box Inspection Checklist

We do a lot of solar PV and renewable energy asset inspections here at HelioVolta and SolarGrade! Every time we visit a site, we use the SolarGrade platform to guide our workflow and document our ...



[How Often Should the Photovoltaic Combiner Box Be Replaced? A ...](#)

While the photovoltaic combiner box replacement cycle varies, proactive monitoring and quality components significantly extend service life. Regular inspections and understanding environmental ...

[How to Properly Maintain Your Photovoltaic Combiner Box for ...](#)

Most solar system owners overlook this critical component until something goes wrong, potentially causing expensive downtime and repairs. To maintain a photovoltaic combiner box ...



[Maintenance and inspection checklist for solar combiner box](#)

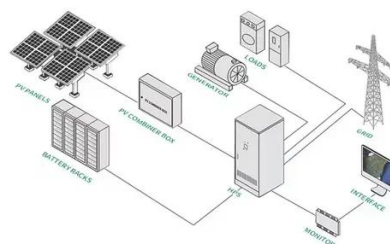
Most experts say you should check your solar combiner box at least every six months. If you live where the weather is rough or your system is old, check more often.



PV String Combiner Box Test



How Often Should the PV Combiner Box Test Be Conducted? PV combiner box tests should be carried out after installation and at regular intervals. It is generally recommended to perform this test ...



[Photovoltaic Power Station Combiner Box Inspection: A Complete ...](#)

Acting as the "nerve center" of solar arrays, combiner boxes channel energy from multiple solar strings to inverters. A single faulty connection here could reduce your plant's output by 15-30% - equivalent ...

[Solar Combiner Box Common Problems & Troubleshooting](#)

In short, even a minor flaw in the solar PV combiner box can disrupt the system's integrity. That's why regular inspection, quality components, and proper grounding are essential to ensuring stability.





Contact Us

For catalog requests, pricing, or partnerships, please visit:

<https://www.firmaskrzypek.pl>

Phone: +48 22 426 71 90

Email: info@firmaskrzypek.pl

Scan the QR code to access our WhatsApp.

