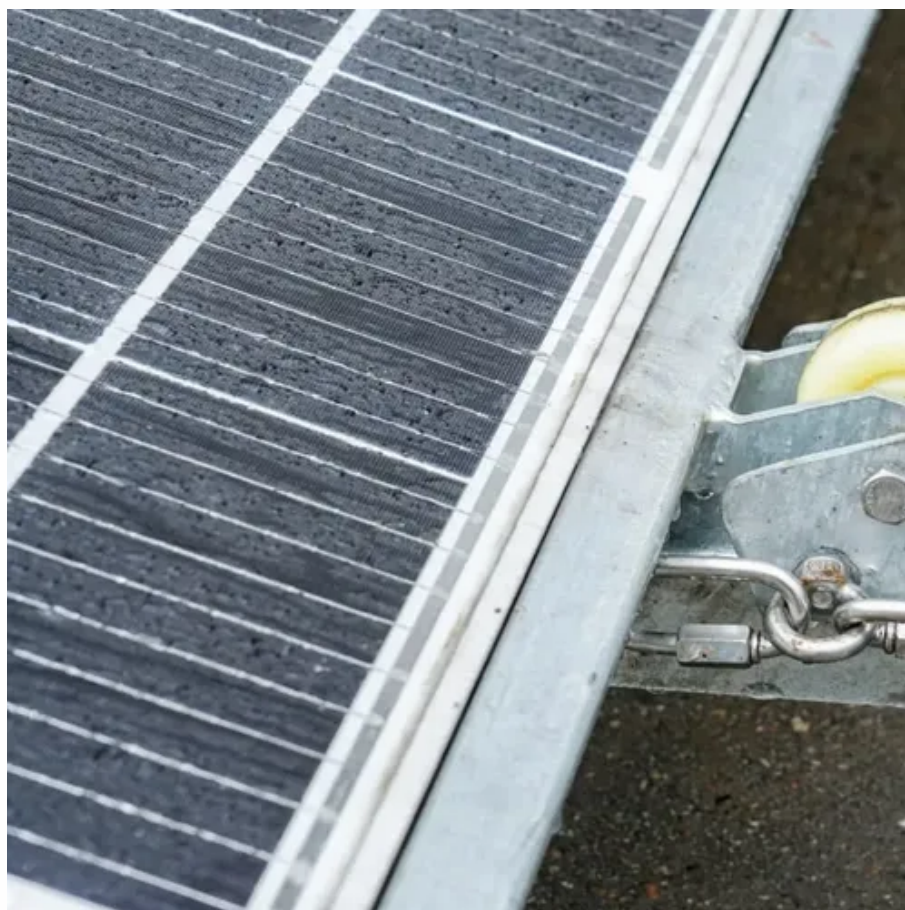




How to check if the photovoltaic panel is broken





Overview

One of the easiest ways to tell if a solar panel is bad is to inspect it for any physical damage. Look for cracks in the glass, delamination (the separation of the different layers of the panel), or broken cells. During inspections, I often come across three common types of damage. Physical damage affects the panel's surface or structure. In this article, we have briefly described them, so read on till the end and grab the information that you are looking for. Or, you might. A multimeter is a tool that measures the voltage, current, and resistance of an electrical circuit. Fluke recommends using the Fluke 117 Electrician's Multimeter or Fluke 283 FC CAT III 1500 V Digital Multimeter to test solar modules.



How to check if the photovoltaic panel is broken



[Detect defective solar modules quickly » Checking the PV system](#)

In order to be able to find the fault in the photovoltaic system quickly in the event of a malfunction, it is necessary to know the structure and function of a solar module or a complete solar ...

[How to Inspect Solar Panels for Damage: A Step-by-Step Guide to ...](#)

Learn how to inspect solar panels for damage with this detailed guide. From visual checks for cracks and corrosion to testing electrical connections with tools like multimeters and thermal cameras, ensure ...



[Broken Or Damaged Solar Panels: Causes And What To Do](#)

If you suspect solar panel damage, the first thing to do is contact the installation company or another qualified solar energy system repair outfit. The technician can accurately evaluate the



[Solar Panel Repair:How Do I Know If My Solar Panels Are Damaged?](#)

In this article, we'll discuss the signs of solar panel damage and provide tips on how to effectively diagnose and repair your solar panel system. We'll also go over the steps you need to take to ensure ...



9 Ways To Check If Your Solar Panels Are Working

9 Ways To Check If Your Solar Panels Are Working. Discover the essential steps to ensure your solar panels are functioning optimally with these 9 practical methods.

How to Test a Solar Panel: A Comprehensive Guide

Learn how to test a solar panel with our step-by-step guide. Check voltage, current, and wattage to ensure optimal performance and efficiency for your solar system.



[How Can You Tell If a Solar Panel is Defective? \(Common Problems\)](#)

First, check to see if the panel is receiving direct sunlight. If the panel is in an area that is shaded, it will not work as efficiently. Also, check the connections to make sure they are tight and ...

[How to Test Solar Panels for Common](#)



Problems , Fluke

Learn how to test solar panels and troubleshoot common problems like faulty panels, poor wiring, and inverter issues.



How to check if the solar panel is broken? .NenPower

To determine if a solar panel is malfunctioning, examine these aspects: 1) Energy Output, 2) Visual Inspection, 3) Inverter Functionality, 4) Connection Inspection.

How To Know If A Solar Panel Is Bad (2 Different Ways)

It's important to be able to identify signs of a bad solar panel so that you can have it repaired or replaced as soon as possible. There are two main ways to determine if a solar panel is ...





Contact Us

For catalog requests, pricing, or partnerships, please visit:

<https://www.firmaskrzypek.pl>

Phone: +48 22 426 71 90

Email: info@firmaskrzypek.pl

Scan the QR code to access our WhatsApp.

