



How to check the negative pole of photovoltaic panels





Overview

To identify a solar panel's polarity, check the MC4 connectors (male/female) or use a multimeter (DC voltage mode)—positive terminals show +V (e., +18V for a 20W panel), negative reads -V or zero. Wires are often red (positive) and black (negative), or labeled. If your solar panel does not have clearly labeled terminals, you can often identify the polarity by inspecting the junction box, which houses the wiring connections. Inside, you will usually find a bypass diode. Understanding the Basics of Solar Panels, 2. Step-by-Step Guide to Identifying. Let's check how easy it is to check the polarity of a solar panel, plus some essential solar knowledge. First, you must turn off the power going into your DC circuit breaker box. Repeat for other PV modules you want to add to the series. Look for “+” and “-” symbols stamped into the panel frame, embossed on wiring insulation, or printed on adhesive labels under. Methods include examining the diode and using a voltmeter to measure voltage.



How to check the negative pole of photovoltaic panels

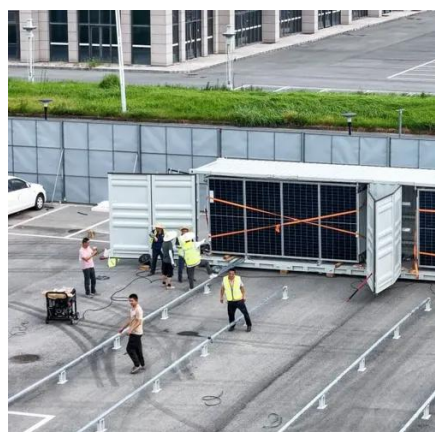
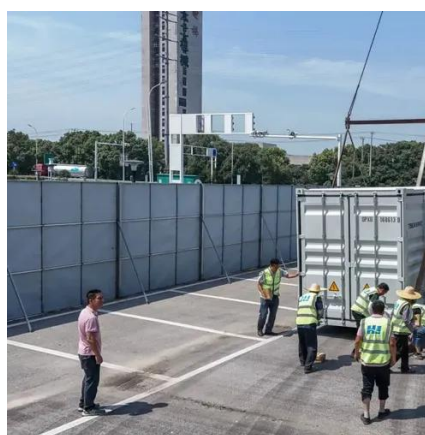


[How to test the positive and negative poles of photovoltaic panels](#)

The article explains how to determine the positive and negative terminals of a solar panel, crucial for proper installation to avoid energy wastage. Methods include examining the diode and using a ...

Solar Panel Positive and Negative (Diode + Voltmeter)

In this article, you will learn how to determine the positive and negative terminals of a solar panel. We will also show you how to check solar panel polarity, and how to connect a solar panel to a battery.



[How To Properly Determine The Negative And Positive Terminals Of ...](#)

In order to measure you're going to need to measure across the wires or terminals. You'll need to place the positive (red) lead on the meter on one side and the negative to the other. Your ...

[How do you know if a solar panel is positive or negative](#)

To identify a solar panel's polarity, check the MC4 connectors (male/female) or use a multimeter (DC voltage mode)--positive terminals show +V (e.g., +18V for a 20W panel), negative reads -V or zero.



[How to identify the positive and negative poles of solar panels](#)

In a typical solar panel configuration, the positive terminal is usually marked with a red wire or a "+" symbol, while the negative terminal is denoted by a black wire or a "-" symbol.



[Identifying Positive and Negative Terminals on a Solar Panel](#)

In this article, we'll explore how to identify the positive and negative terminals of a solar panel, check solar panel polarity, and effectively connect a solar panel to a battery.



How to Check Solar Panel Polarity (Reverses + Fixes)

How to Check Solar Panel Polarity
What Is Reverse Polarity?
How Do I Fix Reverse Polarity?
Can Solar Panels Work in Reverse?
How Do You Test DC Polarity?
Are Solar Panels Energy negative?
How Do You Determine Reverse Polarity?
How Do You Check Polarity Without A Multimeter?
What Happens If You Hook Up A Solar Panel Backward?
Are Solar Panel Connectors Standard?
To check solar panel polarity, you need a voltmeter or multimeter. First, you must turn off the power going into your DC circuit breakerbox.



Then, head outside and remove the covers protecting your PV panels' wiring terminals. Place one probe from your voltmeter onto the two-terminal leads connected to an individual PV module. If both probes read p See more on solvoltaics solar-system [PDF]

How to distinguish positive and negative poles in photovoltaic panels

Simply attach the amp meter to the positive and negative poles of your solar panel. Make sure your panel has full sunlight before testing and that you use an amp meter with enough range so that you ...

[How to identify positive and negative solar panel polarity](#)

If you connect the positive and negative terminals incorrectly, you'll face reduced efficiency, potential equipment damage, or even safety hazards. Let's break down the most reliable methods to identify ...



How to Check Solar Panel Polarity

How to Check Solar Panel Polarity: You can use a diode, voltmeter or a multimeter to find the panel's polarity.

[How to distinguish positive and negative poles in photovoltaic panels](#)

Simply attach the amp meter to the positive and negative poles of your solar panel. Make sure your panel has full sunlight before testing and that you use an amp meter with enough range so that you



...



TAX FREE

Product Model

HJ-ESS-215A(100KW/215KWh)
HJ-ESS-115A(50KW 115KWh)

Dimensions

1600*1280*2200mm
1600*1200*2000mm

Rated Battery Capacity

215KWH/115KWH

Battery Cooling Method

Air Cooled/Liquid Cooled



How to Check Solar Panel Polarity (Reverses + Fixes)

A solar panel's polarity is essential when installing or replacing a solar panel. Solar panels are polarized to generate more power during the day, but if your system is not set up ...



Contact Us

For catalog requests, pricing, or partnerships, please visit:

<https://www.firmaskrzypek.pl>

Phone: +48 22 426 71 90

Email: info@firmaskrzypek.pl

Scan the QR code to access our WhatsApp.

