



# How to cut off the power of the transformer energy storage cabinet





## Overview

---

In order to ensure the safety of our workplace before shutting down the transformer power must be turned off. it includes: turn off the power switch or knife switch on the input end; turn off the power switch or knife switch on the output end; turn off the main and. How to Safely Shut Down a Transformer Using the HT Panel This procedure outlines the step-by-step method to safely shut down a transformer through the HT (High Tension) panel. First, plan the shutdown in advance and inform all relevant departments. Single-phase transformers supply power for residential lighting, receptacles, air-conditioning and heating. The modules identify master-slave systems through the DIP. In power systems, synchronization is a fundamental requirement for connecting two sources of electric power, such as a generator to a grid or between segments of the power network.



## How to cut off the power of the transformer energy storage cabinet

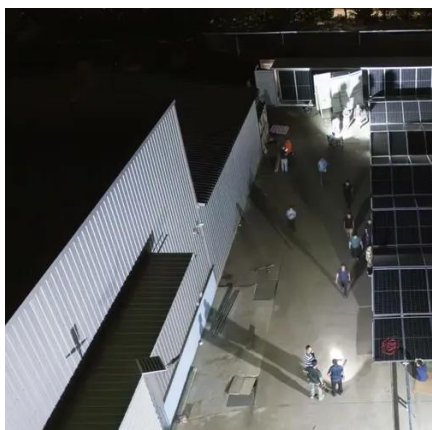


### [How to Safely Shut Down a Transformer Using the HT Panel](#)

Begin by switching off the incoming power supply to the HT panel remotely. Apply lockout and tagout devices on the panel's incoming feeders to ensure safety and prevent accidental energization

### how to safely turn off power from transformer

This article aims to inform the reader about the applications, procurement, selection & design, and integration of BESS (battery energy storage systems) into LV and MV power networks.



### [Transformer Operation and Shutdown Under Specific Conditions: ...](#)

Safety protocols for transformer shutdown involve a systematic approach to de-energizing, isolating, and securing the equipment. Key steps include load transfer, circuit breaker operation, grounding, and ...

### [How to turn off the electric energy storage circuit breaker](#)

How to turn off your circuit breaker To turn off the power in your home, begin by locating the electrical service panel, then follow our step-by-step instructions below.



### [How to design an energy storage cabinet: integration and optimization](#)

As the core equipment in the energy storage system, the energy storage cabinet plays a key role in storing, dispatching and releasing electrical energy. How to design an efficient, reliable ...

## How To Turn Off A Transformer On A Power Pole

We need to turn off the power and then close the transmission lines and corresponding switches, so that the current will not pass through the transformer. Close both the incoming and outgoing switches of ...

- LIQUID/AIR COOLING
- INTELLIGENT INTEGRATION
- PROTECTION IP54/IP55
- BATTERY /6000 CYCLES



### [Why and How to Turn Off the Energy Storage Power Supply: A ...](#)

This article isn't just for engineers in hard hats. Homeowners with solar panels, factory managers optimizing energy costs, and even coffee shop owners using battery backups need to ...



## Residential Customer Equipment



## Guide

Pedestals are installed to better utilize the capacity of a single transformer. When a pedestal is used, a cable runs from the transformer to the pedestal and acts as a splitting device, converting the single ...



### [Assembly and Binding of Energy Storage Cabinet: A Step-by-Step ...](#)

If you're an energy project manager, installation technician, or sustainability-focused engineer, you've probably faced the "Transformer Dilemma" - how to efficiently assemble bulky energy storage ...



## Contact Us

---

For catalog requests, pricing, or partnerships, please visit:

<https://www.firmaskrzypek.pl>

Phone: +48 22 426 71 90

Email: [info@firmaskrzypek.pl](mailto:info@firmaskrzypek.pl)

Scan the QR code to access our WhatsApp.

