



How to detect current in photovoltaic combiner box





Overview

The input current of a smart combiner box can be measured by isolated and non-isolated current sensing methods depending on the accuracy, size, and cost restrictions. Isolated solutions are widely used in smart combiner boxes. It consolidates the output of multiple solar panel strings into a single output, facilitating the management and protection of the electrical current flowing from the panels to the. A solar combiner box is a crucial component in solar energy systems, designed to consolidate the outputs of multiple solar panel strings into a single output that connects to an inverter. This device plays a significant role in both residential and commercial solar installations, particularly when. This guide explains how combiner boxes work, how they have evolved, how to select the right model, and what future trends will shape the next generation of solar infrastructure. Failure can stem from wiring faults, fuse issues, poor grounding, or even weather. I am Wao Wu, co-founder and Sales Director at ADNLITE.



How to detect current in photovoltaic combiner box

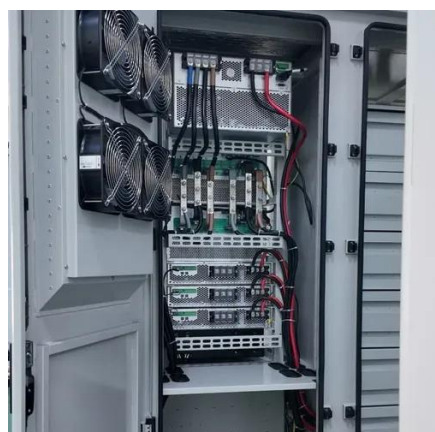


How Does a Solar Combiner Box Work - Explained

A solar combiner box gathers multiple solar panel strings into one output, adds protection and monitoring, and feeds the combined DC power to an inverter safely and efficiently.

[What Is a Combiner Box in a Solar Panel System? Complete Guide](#)

Place the combiner between the PV array and the inverter, in shade if possible, with short, neat cable runs, clear polarity marks, strong earthing, and correct voltage and current ratings.



[A Comprehensive Guide to Combiner Boxes in Photovoltaic Systems](#)

Combiner boxes play an important role in photovoltaic (PV) installations. This comprehensive guide aims to shed light on the importance, functions, types and best practices of combiner boxes, unlocking the ...

[Solar Combiner Box With String Monitoring Essential Guide](#)

One such component is the Solar PV Combiner Box, a vital piece of equipment that ensures the smooth operation of photovoltaic (PV) systems. In this article, we'll delve into the intricacies of solar PV ...



[600-V Unidirectional Current, Voltage, and Power Monitoring for ...](#)

The input current of a smart combiner box can be measured by isolated and non-isolated current sensing methods depending on the accuracy, size, and cost restrictions.



[Solar Combiner Boxes and Voltage Changes: What to Know](#)

Each solar panel sends out direct current (DC) electricity. The solar combiner box takes these currents and sends them in one path to your inverter. Here is what top sources say about what a solar ...



[Understanding PV Combiner Boxes: Design, Function, Protection, and](#)

This guide explains how combiner boxes work, how they have evolved, how to select the right model, and what future trends will shape the next generation of solar infrastructure.



[Solar Combiner Box Common Problems &](#)



Troubleshooting

Learn how to detect and fix it. The solar combiner box, also known as a PV string combiner box, centralizes and protects your PV array wiring. Failure can stem from wiring faults, fuse issues, poor ...



Understanding the Importance and Operations of PV Combiner Boxes ...

At this confluence point, it monitors each PV string's current, voltage, and power. It employs protective devices that ensure short-circuit protection, reverse polarity prevention, ...

The Ultimate Guide to Solar Combiner Boxes: From Basics to ...

Maximum Current: Select a combiner box with a current rating that can handle the maximum current produced by your solar panel strings. Common ratings are typically below 15A or ...





Contact Us

For catalog requests, pricing, or partnerships, please visit:

<https://www.firmaskrzypek.pl>

Phone: +48 22 426 71 90

Email: info@firmaskrzypek.pl

Scan the QR code to access our WhatsApp.

