



How to shut down the communication high voltage solar container battery cabinet





Overview

Manually set the battery breaker of each individual battery cabinet to the OFF (open) position to disconnect the battery power from the UPS. NOTE: The system BMS and rack BMS will still be operating. Knowing how to safely shut down your SunPower solar battery system is crucial, especially in emergencies or during maintenance. The Powerwall 3 On/Off switch is also certified to UL 1741 as a means of manually initiating rapid shutdown. If the battery solution should remain shut down for a longer period, please contact Schneider Electric. Avoid Common Mistakes: Ensure the use of appropriate insulated tools and adherence to safety. Take the following precautions to stay safe around your solar PV system during a flood: Stay away from solar panels and wiring if you're forced onto a rooftop. Step 1 - Turn Off the AC Switch off the AC isolator. Switch on PV array connection.



How to shut down the communication high voltage solar container ba



STEP 8: Install System Shutdown Switch Where Required

Where required by local code, Powerwall 3 can be wired to a remote System Shutdown Switch that manually initiates rapid shutdown, disabling solar output. The Powerwall 3 On/Off switch is also ...

How to remove the power cord of the energy storage battery in ...

If you want to connect your battery with Solis inverters, the communication ports on the inverter side are as follows: CAN-H (Controller Area Network High) on Pin 4 (blue) CAN-L (Controller



How to switch off and on your solar system & home battery

Step 1 - Begin by turning off the main battery supply switch, which is typically located in the switchboard or in close proximity to the battery.
Step 2 - Next, locate the PV array DC isolator, ...

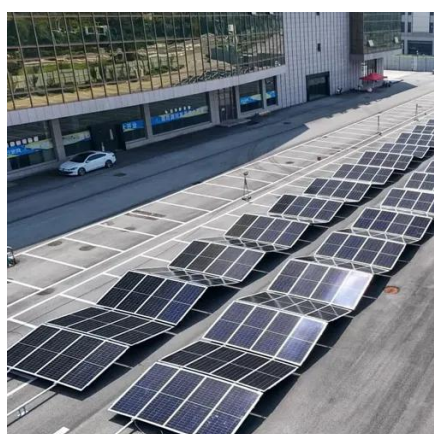
Shutdown and Isolation Procedure

Pull down battery isolator fuse. Do this sharply and smoothly to avoid arcs. Your solar PV system should now be completely switched off. All lights and screen displays will be dead. Keep the system off for a ...



How to Safely Disconnect Battery from Solar Panels

Ensure optimal performance for your solar setup with our expert guide on battery disconnect with solar panel settings tailored for efficiency and safety.



[Sigenergy Inverter/Battery Start up and Shut down procedure](#)

Subscribed 9 2.8K views 4 months ago Overview of how to start up and shut down your Sigenergy Solar + Battery System more



[SunPower Shutdown Guide: Turn Off Your Solar Panel System](#)

Knowing how to safely shut down your SunPower solar battery system is crucial, especially in emergencies or during maintenance. Our trusted solar superintendent will walk you ...



[How to Disconnect Battery from Solar](#)



Panel: A Step-by-Step Safety ...

Learn how to safely disconnect your solar panel battery with our comprehensive guide. We outline essential safety precautions, necessary tools, and a step-by-step process to prevent ...



5. Operation

Reduce DC input voltage and/or check for a faulty battery- or solar-charger in the system. After shutting down due to a high battery voltage, the unit will first wait 30 seconds and then retry operation as ...

Shut Down the Battery Solution

Manually set the battery breaker of each individual battery cabinet to the OFF (open) position to disconnect the battery power from the UPS. NOTE: The system BMS and rack BMS will still be ...





Contact Us

For catalog requests, pricing, or partnerships, please visit:

<https://www.firmaskrzypek.pl>

Phone: +48 22 426 71 90

Email: info@firmaskrzypek.pl

Scan the QR code to access our WhatsApp.

