



How to use the dedicated battery for mobile base station equipment





Overview

This article will explore in detail how to secure backup power for telecom base stations, discussing the components involved, advanced technologies, best practices, and future trends to ensure continuous operation and resilience in the face of disruptions. Or put solar on it and let it self charge to keep it up and running longer. Telecom base stations are often installed. High-capacity batteries ensure continuous service, especially for critical systems like 5G networks that demand low latency and high availability. ESTEL battery backup systems excel in meeting these challenges, offering an uninterruptible power supply tailored to the needs of telecommunications. Among various battery technologies, Lithium Iron Phosphate (LiFePO₄) batteries stand out as the ideal choice for telecom base station backup power due to their high safety, long lifespan, and excellent thermal stability. Our V series battery pack is designed to provide safe, high-performance energy storage solutions for a variety of applications.



How to use the dedicated battery for mobile base station equipment



[Communication Batteries: Why Telecom Base Stations Have Unique ...](#)

This article clarifies what communication batteries truly mean in the context of telecom base stations, why these applications have unique requirements, and which battery technologies are ...

[Telecom Base Station Backup Power Solution: Design Guide for 48V ...](#)

Designing a 48V 100Ah LiFePO4 battery pack for telecom base stations requires careful consideration of electrical performance, thermal management, safety protections, and compatibility ...



Mobile Base Station Battery Pack Requirements

A base station energy storage battery is a crucial component of telecommunication infrastructure, designed to improve the efficiency and reliability of network operations.

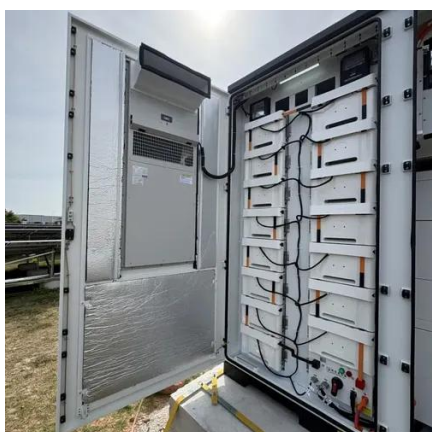
[Securing Backup Power for Telecom Base Stations - leagend](#)

To secure backup power for telecom base stations, operators must adopt a multi-faceted approach that covers system design, installation, maintenance, and security.



Base station dedicated power battery

Abstract: Cellular base stations (BSs) are equipped with backup batteries to obtain the uninterruptible power supply (UPS) and maintain the power supply reliability.



V5 user manual-PYTES 1.3

Our V series battery pack is designed to provide safe, high-performance energy storage solutions for a variety of applications. The compact and easy-to-install battery pack can be used as a basic building ...



Setting up a base unit

Get a LiFePO4 battery for the base station to keep that up and running for a while. Or put solar on it and let it self charge to keep it up and running longer.



MOBILE DC POWER SYSTEMS FOR



SUBSTATION ...

The type of battery used in mobile applications should be carefully considered based on a number of criteria such as station duty profile, expected operating temperature conditions and desired design life.



[How to Select the Best ESTEL Battery Backup for Base Stations](#)

Choose the best telecom battery backup systems by evaluating capacity, battery type, environmental adaptability, maintenance, and scalability for base stations.



[Choosing a 12V Battery for Your Mobile Base Station](#)

To ensure your battery powers your base station for your entire workday, factor in both your daily operational hours and your transmitter's power output when determining the necessary capacity (Ah).





Contact Us

For catalog requests, pricing, or partnerships, please visit:

<https://www.firmaskrzypek.pl>

Phone: +48 22 426 71 90

Email: info@firmaskrzypek.pl

Scan the QR code to access our WhatsApp.

