



Indian telecommunications to shut down 5g base station for electricity





Indian telecommunications to shut down 5g base station for electricit

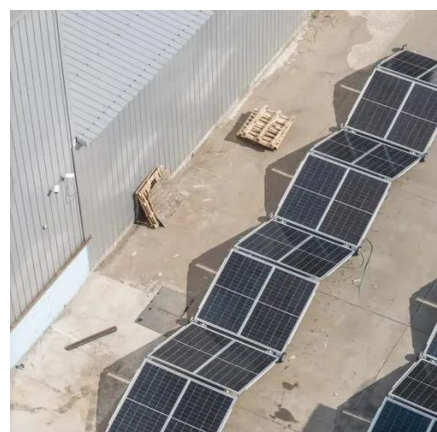
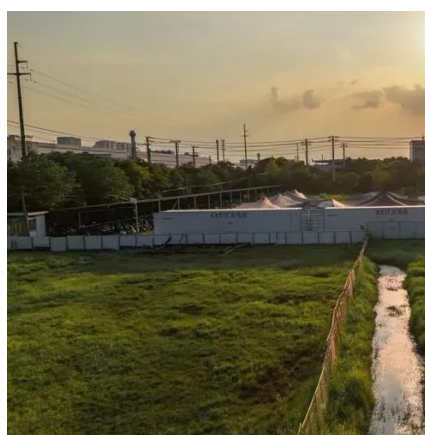


Indian Government Eases EMF Norms for 5G: Report

India has relaxed EMF norms for 5G by increasing the power density limit for base stations. This change is expected to accelerate 5G rollouts, improve coverage, and reduce costs for

[India surpasses 0.5 million 5G base transceiver station \(BTS\)](#)

India installed over 4,100 new 5G base transceiver stations (BTS) in October 2025, marking a slowdown from the more than 6,400 sites added earlier in September.



[Assessing the carbon footprint of telecommunication towers in India](#)

Adoption of solar PV-based systems along with grid electricity and diesel generator in hybrid mode has the potential to reduce carbon dioxide emissions by approximately 55 % for the ...

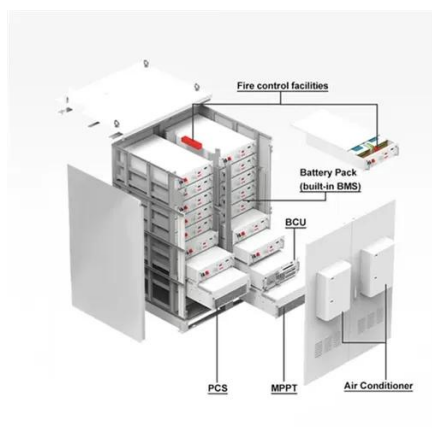
Shut down 5G base stations , Huijue Group E-Site

As 5G deployments accelerate globally, power base stations now handle 300% more concurrent connections than in 2019. But are existing fusing systems truly equipped to prevent cascading ...



5G BTS Deployment in India Slows: Vodafone Idea and BSNL Readying 5G ...

Telecom infrastructure provider Indus Towers (Indus), during its third-quarter earnings call for the period ending December 31, 2024, confirmed that the pace of 5G BTS deployment has slowed



Press Release: Press Information Bureau

From the expansion of 5G services to the launch of new policies aimed at enhancing telecom infrastructure and user experience, DoT's efforts have been instrumental in boosting ...



5G Rollout

Telecom Service Providers (TSPs) have expanded the 5G services across the country and have gone beyond the minimum rollout obligations, as prescribed in the Notice Inviting ...



5G base station additions plunge as Jio



and Airtel slow down network

Recent data highlights a significant reduction in quarterly 5G base station additions by Reliance Jio and Bharti Airtel. The decreased rollout of 5G sites is leading to slower revenue growth ...



5G base station additions plunge as Jio and Airtel slow down network

Net 5G base station (BTS) or 'site' additions have plunged in recent quarters, underlining the steep decline in network-building capital expenditures of both Reliance Jio and Bharti Airtel ...



Contact Us

For catalog requests, pricing, or partnerships, please visit:

<https://www.firmaskrzypek.pl>

Phone: +48 22 426 71 90

Email: info@firmaskrzypek.pl

Scan the QR code to access our WhatsApp.

