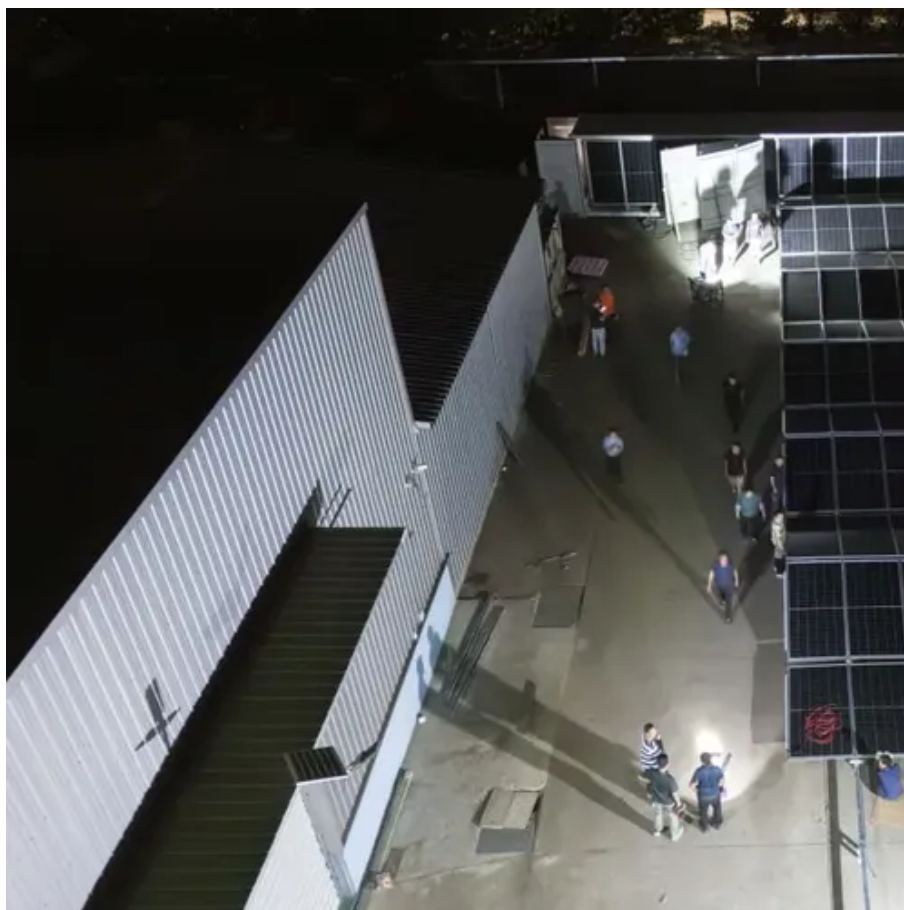




# Installation clearance requirements for photovoltaic panels





## Overview

---

They are required to be not less than 36 in. (914 mm) wide and run from the gutter to the ridge. When installing photovoltaic panels on one- and two-family homes, it's important to understand the requirements for access pathways and the requirements for setback from the ridge, which only apply to roofs with a slope greater than a 2-in-12 pitch. Access pathways are intended to provide access to. In 2011, California adopted a Renewable Portfolio Standard (RPS) requiring that at least one-third of the state's electricity come from clean energy sources by 2020. The California RPS program was established in 2002 by Senate Bill (SB) 1078 (Sher, 2002) with the initial requirement that 20% of. The Renewable Energy Ready Home (RERH) specifications were developed by the U. Environmental Protection Agency (EPA) to assist builders in designing and constructing homes equipped with a set of features that make the installation of solar energy systems after the completion of the home's. ins consumer friendly and its benefits are accessible to low- and moderate-income households. In ad-dition to publishing guides, the Sustainable Solar Education Project will produce webinars, an online course, a monthly newsletter, and in-person training on topics related to strengthening solar. permit is required for the structural support of all solar energy sy acing for supports of the solar energy devices shall be 48" on center. These codes, which encompass structural, electrical, fire safety, and zoning regulations, provide a comprehensive framework for the proper design, installation, and.



## Installation clearance requirements for photovoltaic panels



### Clearance requirements for photovoltaic panels

The site plan must show the location of all existing and proposed PV panels, AC or DC combiners, all disconnections, inverters, and sub-panels connected to the PV system and the

### Solar Permitting Guidebook 4th Edition

While current Title 24 requirements establish several legal standards for installation of solar energy installations, Title 24 may be amended through the state's code update process to ...



### Photovoltaic Tip Sheet

Electrical permits and inspections are required for all PV installations that connect to the building's electrical system. Some jurisdictions may also require an electrical plan review.

### [Solar Photovoltaic: SPECIFICATION, CHECKLIST AND GUIDE](#)

discusses certification, equipment, and warranties for solar photovoltaic (PV) equipment and systems. It discusses a selection of programs and rules in these areas to highlight various means by ...



### Solar Photovoltaic: SPECIFICATION, CHECKLIST AND GUIDE

Although system arrays (panels or collectors) can be racked up to meet the inclination/tilt needed for optimal system output, this specification is based on and limited to the known building attributes (roof ...



### Standards and Requirements for Solar Equipment, Installation, ...

... certification, equipment, and warranties for solar photovoltaic (PV) equipment and systems. It discusses a selection of programs and rules in these areas to highlight various means by ...



### **GUIDELINES FOR PLAN CHECK AND PERMIT ...**

Solar photovoltaic projects under the Department of Water and Power's Feed-in-Tariff (FiT) program shall comply with all the conditions of the FiT Program Master Conditional Use Permit (CUP); ...



### **Residential Solar Panel**



## Requirements

When installing photovoltaic panels on one- and two-family homes, it's important to understand the requirements for access pathways and the requirements for setback from the ridge, ...

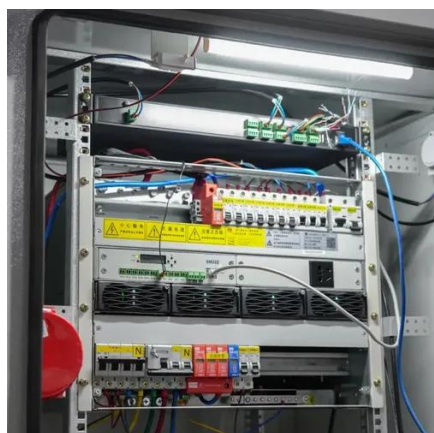
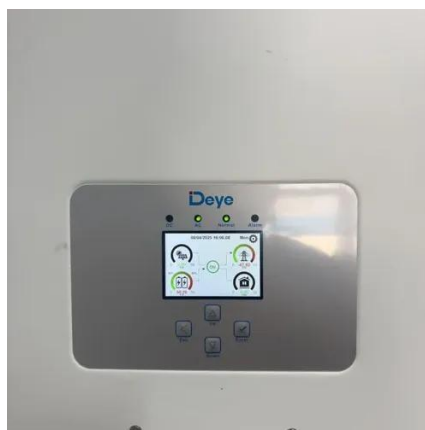


## Installation of Photovoltaic Systems

This helps ensure future installation of a solar energy system is not precluded by the original design and layout of the building and its associated equipment. The following sections list the applicable code ...

### [Solar Panel Roof Setbacks: Rules, 33% and Edge Clearances](#)

Learn solar panel roof setbacks - typical ridge and edge distances, the 33% coverage rule, and how to plan compliant arrays. Clear, practical guidance.



## Building Codes for Solar Panel Installation

In this article, we'll dive deep into the ins and outs of building codes for solar panel installation, covering everything from structural integrity and electrical safety to fire prevention and ...



## Contact Us

---

For catalog requests, pricing, or partnerships, please visit:

<https://www.firmaskrzypek.pl>

Phone: +48 22 426 71 90

Email: [info@firmaskrzypek.pl](mailto:info@firmaskrzypek.pl)

Scan the QR code to access our WhatsApp.

