



Inverter PV panel distance





Overview

An inverter should be installed as close to the solar panels as possible. The recommended distance is within 30 feet (9 meters). Understanding solar panel inverter distance is particularly relevant for homeowners and businesses with specific space and safety considerations, such as those who prefer to store their solar battery and inverter in a separate, temperature-controlled environment like a guest house. While it is possible for solar panels to be installed up to 500 feet from your house and, therefore, the inverter, it isn't practical. Keep reading to learn more about why solar panels can only be so far away from an inverter. But there's a crucial, often overlooked, factor that significantly impacts your system's performance and cost: the distance between solar panels and inverter. In this article, I will discuss the ideal distance between solar panels and an inverter, the consequences of exceeding this distance, and what to do if you need to install your solar panels further away. With high voltage dc used on modern solar systems the distance between panels and inverters can be quite far 100s feet possible.



Inverter PV panel distance

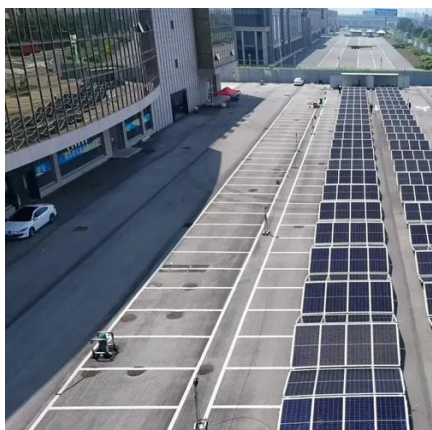


[Optimizing Solar Panel Distance from Inverter - A ...](#)

This guide covers factors affecting solar panel and inverter distance, wire types, efficiency implications, power loss, and practical recommendations.

[How Far Can Solar Panels Be From An Inverter? Why It Should Be ...](#)

An inverter should be installed as close to the solar panels as possible. The recommended distance is within 30 feet (9 meters). A shorter distance improves the efficiency of the ...



[How Far Can Solar Panels Be from an Inverter? What You Should ...](#)

Want to know the ideal distance between your solar panels and inverter? Learn about the recommended distance, the consequences of exceeding it, and solutions for long cable runs.

How Far Can Solar Panels Be From Inverter

Ideally, solar panels should be as close to the inverter and charge controller as possible. In situations where the panels are roof-mounted, this typically translates to anywhere between 20 ...



How Close Do Solar Panels Need To The Inverter?

Ideally, inverters should be located within 25 to 50 feet of the solar panels to minimize energy loss due to voltage drop. A distance of under 100 feet is generally recommended, as longer ...



[Solar Panel Inverter Distance: How Far Can They Be from Your ...](#)

When considering the solar panel inverter distance, one of the first things to remember is how far your inverter and battery are from the main electrical panel.



[Optimal Distance Between Inverter and PV Panels: Key Factors for ...](#)

Summary: The distance between solar inverters and photovoltaic (PV) panels directly impacts system performance, energy loss, and installation costs. This guide explores best practices, technical ...



How Far Can Solar Panels Be From



Inverter

How Far Can Solar Panels Be from Inverter? What Does It Depend on How Far Can Solar Panels Be Away from Inverter? Why Is It Important to Know How Far Can Solar Panels Be Away from The Inverter? How Will You Know If Your Solar Panels Are Too Far Away from The Inverter? Final Thoughts on The Distance Between Solar Panels and Inverters. Ideally, solar panels should be as close to the inverter and charge controller as possible. In situations where the panels are roof-mounted, this typically translates to anywhere between 20 and 50 feet from a group of panels to the inverter. When it isn't possible to roof solar mount panels, and with excessive shade conditions close by, solar panel See more on solivace solarpanelempire



5 Top Tips for Optimizing the Distance Between Solar Panels and ...

Ultimately, minimizing the distance between solar panels and inverter is generally a good rule of thumb, but inverter placement also needs to consider accessibility, safety, and environmental protection.

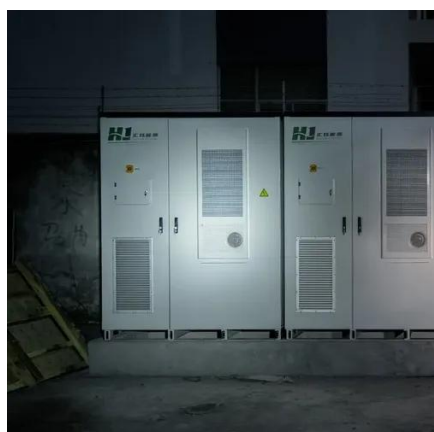


Distances from panels to inverter

With high voltage dc used on modern solar systems the distance between panels and inverters can be quite far 100s feet possible. Inverters and batteries should be close to the house to ...

[How Far Can Solar Panels Be From the Inverter? Understanding the](#)

In this article, we explore the important topic of how far away solar panels can be from inverter, providing insights to help you make informed decisions for your solar projects.



5 Top Tips for Optimizing the Distance Between Solar Panels and Inverter

Ultimately, minimizing the distance between solar panels and inverter is generally a good rule of thumb, but inverter placement also needs to consider accessibility, safety, and environmental protection.



Contact Us

For catalog requests, pricing, or partnerships, please visit:

<https://www.firmaskrzypek.pl>

Phone: +48 22 426 71 90

Email: info@firmaskrzypek.pl

Scan the QR code to access our WhatsApp.

