



Is it better to use 36V or 48V for industrial frequency inverter





Overview

While technically possible to run a 48V motor on a 36V battery, the practice comes with significant compromises in performance, reliability, safety, and overall value. For most applications, the risks and limitations outweigh the convenience, making proper voltage matching. A 36V battery powering a 48V motor results in reduced torque, slower speeds, decreased range, and safety risks. How Voltage Works with Motors and Batteries 2. Safety. A 48V to 36V inverter serves as the backbone for numerous applications - from robotic assembly lines to solar-powered surveillance systems. This guide explores why this specific volta In industrial automation and renewable energy systems, voltage conversion plays a critical role. 36V systems power light electric vehicles (e-bikes, scooters) with moderate range, while 48V packs offer 33% higher voltage for enhanced torque and efficiency in cargo e-bikes or low-speed EVs. Both use lithium-ion. However, businesses or factories often need 24V or 48V setups to handle bigger loads. Each choice depends on the system's unique demands. This guide cuts through the.



Is it better to use 36V or 48V for industrial frequency inverter



[Best 12V, 24V, 36V, and 48V Lithium Deep Cycle Battery for a Power ...](#)

Using a 12V battery on a 24V inverter won't just reduce efficiency--it may trigger low-voltage shutdowns or overwork the inverter's boost converter. Conversely, a 48V battery connected ...

[48V to 36V Inverter: Applications, Benefits, and Key Considerations ...](#)

A 48V to 36V inverter serves as the backbone for numerous applications - from robotic assembly lines to solar-powered surveillance systems. This guide explores why this specific voltage conversion ...



[48V systems: Design considerations for a typical auxiliary power ...](#)

In the 48V case, transistors and drivers that can handle at least 100V on the power nodes are a good choice.

[The Power of 48 V: Relevance, Benefits, and Essentials in](#)

In modern industrial and communication applications, interoperability is key. Implementing standardized communication protocols ensures seamless data exchange between subsystems operating at 48 V, ...



[How to Choose the Right Inverter Battery Voltage for Your Needs](#)

Understanding inverter battery voltage is key to creating a strong and dependable power system. This detailed guide explores how to choose the right voltage, offers tips for specific uses, and shares care ...

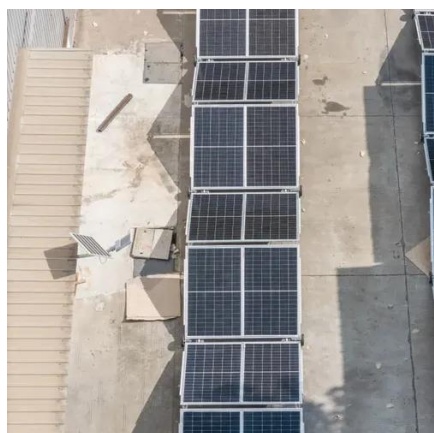
48V Motor with 36V Battery: Risks You Should Know

Using a 36V battery with a 48V motor reduces performance by 25%, increases heat generation, shortens component lifespan, and creates potential fire hazards due to higher current ...



What Happens If You Put 48V to a 36V Motor?

Battery Life and Efficiency: 48V systems are typically more efficient and may offer longer battery life compared to 36V systems. The reduced current draw on each individual battery can lead ...



[12V vs. 24V vs. 48V Power Inverters: How](#)



to Choose the Right ...

This guide cuts through the confusion: we'll break down the key differences between 12V, 24V, and 48V inverters, explain which scenarios each is best for, and walk you through a step-by ...



What's The Difference Between 36V And 48V?

Both use lithium-ion chemistries (LiFePO4 for safety, NMC for energy density), but 48V charges to 54.6V vs. 42V for 36V, demanding compatible chargers and controllers.

Can I use a 36V battery with a 48V motor?

Using a 36V battery with a 48V motor is technically possible, but it comes with risks and considerations. The compatibility between the two systems depends on various factors such as the ...





Contact Us

For catalog requests, pricing, or partnerships, please visit:

<https://www.firmaskrzypek.pl>

Phone: +48 22 426 71 90

Email: info@firmaskrzypek.pl

Scan the QR code to access our WhatsApp.

