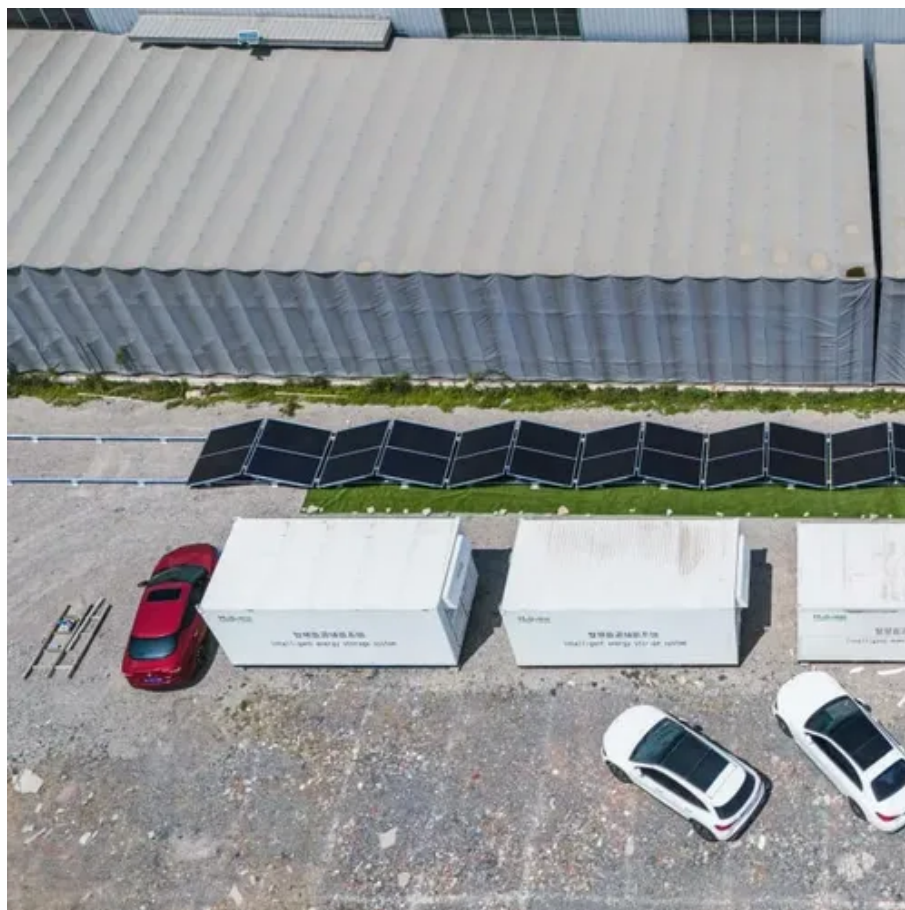




# Is it okay to always install photovoltaic panels on an inclined surface





## Overview

---

Tilting solar panels is the right way to install them on roofs because this will increase the amount of solar energy absorbed. It will result in an enhanced energy production rate and thus be more lucrative for you. But here's the kicker: slopes aren't just angled surfaces - they're dynamic systems requiring specialized handling. Let's unpack what it really takes to harness solar power on. Installing photovoltaic (PV) panels on sloped roofs is one of the most popular solutions, allowing effective use of roof space while maximizing system performance. A correctly tilted system can improve.



## Is it okay to always install photovoltaic panels on an inclined surface



### [Slope Solar 101: Key Requirements for Installing Photovoltaic Panels on](#)

With global solar capacity projected to triple by 2030, engineers are increasingly eyeing slopes for PV installations. But here's the kicker: slopes aren't just angled surfaces - they're dynamic systems ...

### [What is the optimal orientation and tilt angle for solar panels](#)

To best optimize the production of solar panels, do not underestimate the importance of their orientation and inclination! However, it's not always about producing a maximum amount of energy; you also ...



### [Solar panel inclination angle, location and orientation](#)

When it comes to solar energy production, the angle at which panels are installed plays a decisive role in determining efficiency. The "best angle" is ...

### [Solar Panel Best Angle , Tilt & Orientation Guide 2025](#)

When it comes to solar energy production, the angle at which panels are installed plays a decisive role in determining efficiency. The "best angle" is not a one-size-fits-all solution--it depends largely ...



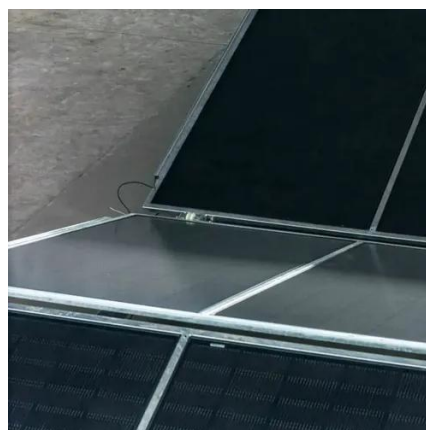
### [How to Choose a Photovoltaic Structure for a Sloped Roof?](#)

Choosing the right support structure for PV panels on a sloped roof is a crucial step in the installation process. The structure should be tailored to the roof's characteristics, made from durable materials, and designed to ...



### [What is the Best Angle for Solar Panels? Maximizing the Efficiency](#)

While orientation towards the sun is important, the angle significantly impacts the amount of solar energy captured. Understanding these factors and adjusting panel angles accordingly can significantly enhance the ...



### [Solar panel inclination angle, location and orientation](#)

The optimal tilt angle of photovoltaic solar panels is that the surface of the solar panel faces the Sun perpendicularly. However, the angle of incidence of solar radiation varies during the day and during ...

## **How to install solar energy on a slope**



## , NenPower

When contemplating solar energy installation on sloped land, one must first analyze the angle of the slope. A higher angle may result in an effective orientation towards the sun but can complicate mounting ...



### Photovoltaic Panels Vertical vs Inclined

Although inclined panels have the advantage of maximizing total production on an annual basis, vertical panels prove to be a highly efficient choice for those seeking more stable and distributed production ...

### What Direction Should Solar Panels Face?

Photovoltaic panels are where the electricity is transferred to the grid after being converted by the panels. For such set-ups, an inclination of 37 degrees is optimal.



### Can Solar Panels be Laid Flat on the Roof? (or Angled?)

Yes, you can install solar panels flat, but they will experience a degree of energy loss without the slightest inclination toward the sunlight. Although it certainly is advantageous to have a roof that is inclined in the ...



## Contact Us

---

For catalog requests, pricing, or partnerships, please visit:

<https://www.firmaskrzypek.pl>

Phone: +48 22 426 71 90

Email: [info@firmaskrzypek.pl](mailto:info@firmaskrzypek.pl)

Scan the QR code to access our WhatsApp.

