



Is the mobile power box off the ground





Overview

The installation process of a power pole and meter box for mobile home typically involves a few key steps. Next, the power pole is installed in the ground, ensuring it is securely anchored and meets. The exterior breaker box for a mobile home, formally known as the service equipment or service pedestal, is the central electrical interface between the utility power grid and the manufactured home structure. Unlike traditional site-built houses, regulatory requirements mandate this equipment be. This document shows methods of supplying underground electric service to meter equipment (pedestal) serving mobile homes in accordance with Electric Rule 15 and Electric Rule 16 for a park that qualifies as a mobile home development as defined by PG&E. No ground rod at the mobile home. When there's an electrical overload or fault in any part of your home's wiring, the breakers trip, cutting off power to that specific circuit to prevent damage or fire hazards.



Is the mobile power box off the ground

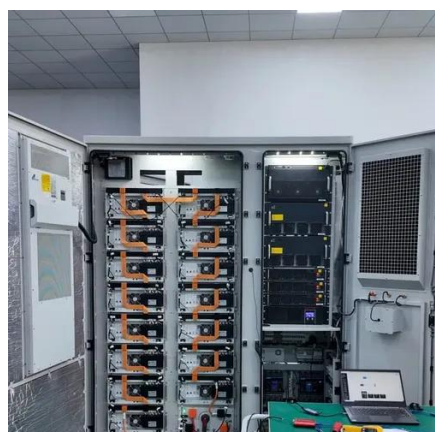


[Dow Jones INDEX TODAY , DJIA LIVE TICKER , Dow Jones ...](#)

Dow Jones Today: Get all information on the Dow Jones Index including historical chart, news and constituents.

[DOW JONES hoy cotización en tiempo real .EXPANSIÓN](#)

Cotización del DOW JONES hoy en tiempo real. Obtenga información actualizada sobre sus valores, recomendaciones análisis e histórico



Datos de DOW JONES

Wall Street ha registrado más compras (Dow Jones:+0,63%; S& P500:+0,55%; Nasdaq:+0,91%) este jueves animado por el último bandazo de Donald Trump.

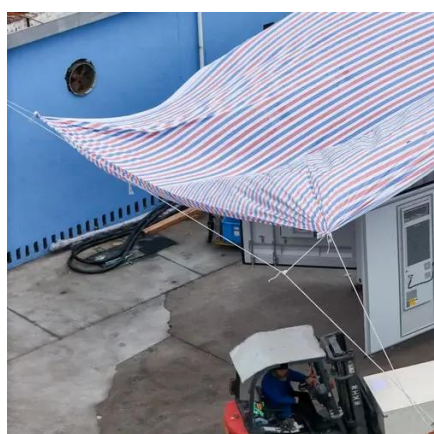
Stay Safe Around The Green Boxes

Maintaining a 10-foot clearance around pad-mount transformer boxes is a good guideline. Pad-mount transformer boxes are grounded, so it is safe to occasionally mow or trim any ...



[Dow Jones Industrial Average Price, Real-time Quote & News](#)

Get the latest Dow Jones Industrial Average (.DJI) value, historical performance, charts, and other financial information to help you make more informed trading and investment decisions.



[Power Pole and Meter Box for Mobile Homes \[Energy Supply\]](#)

A breaker box outside is standard, especially in regions with moderate to warm climates. However, this might vary depending on local ...



Mobile power system inverter and grounding

I am interested to hear what the experts have to say about this issue. I believe the best thing to do is to ground all the devices to the "chassis" and don't bond the neutral to the ground ...



[Dow Jones: cotización en Bolsa , Mercados](#)



[en Cinco Días](#)

Cotización del Dow Jones en directo: empresas, acciones, capital, rentabilidad, gráficos, cierre, históricos y toda la información del Dow Jones con Cinco Días.



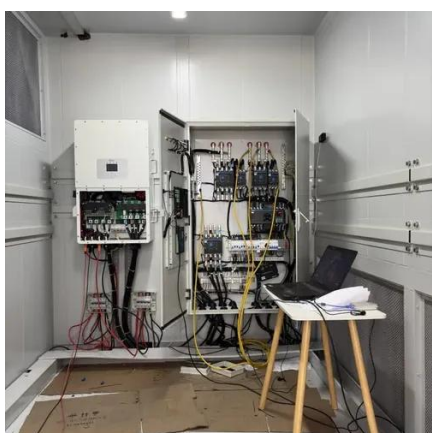
[Power Pole and Meter Box for Mobile Homes \[Energy Supply\]](#)

The installation process of a power pole and meter box for mobile home typically involves a few key steps. First, the site must be prepared and the proper permits obtained.



[Why Is My Breaker Box Outside of My House?, Mr. Electric](#)

Over the past 15 years, regulations have been introduced in certain parts of the country requiring breaker boxes to be located outside of the home. This is so that the local fire department ...



[DJIA , Dow Jones Industrial Average Overview , MarketWatch](#)

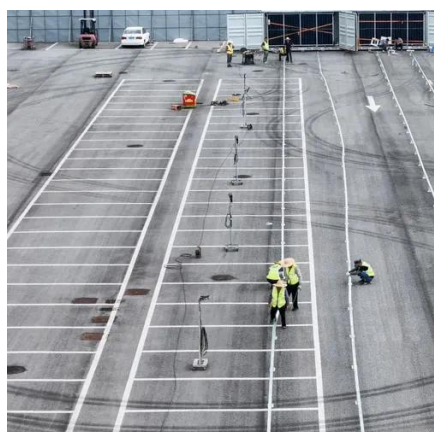
DJIA , A complete Dow Jones Industrial Average index overview by MarketWatch. View stock market news, stock market data and trading information.

Understanding Your Outside Breaker



Box

A breaker box outside is standard, especially in regions with moderate to warm climates. However, this might vary depending on local building codes and regulations.

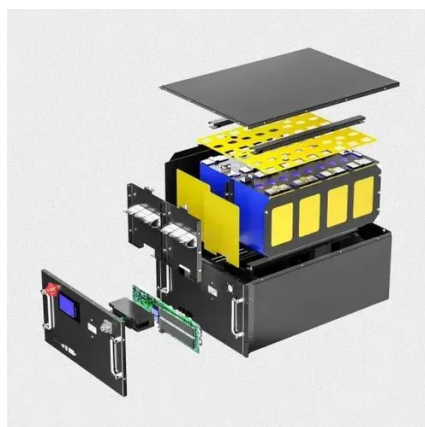


What Is an Outside Breaker Box for a Mobile Home?

The equipment must be mounted in a readily accessible outdoor location and remain within sight of the mobile home it serves. The core requirement is that the disconnect must be visible ...

Mobile Home Power Pole: Installation Guide & Cost

Yes, electrical permits are required for mobile home power pole installation. You'll need permits from local authorities (\$100-\$500) and coordination with your utility company.



Índice Dow Jones (DJI) , Cotización Dow Jones

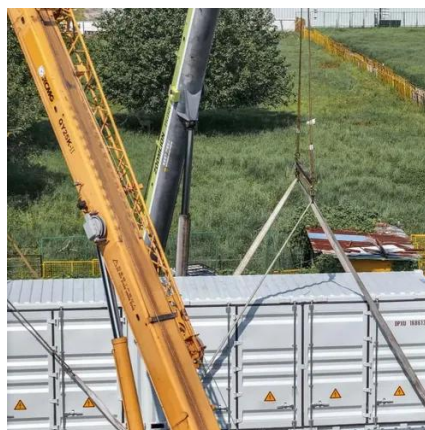
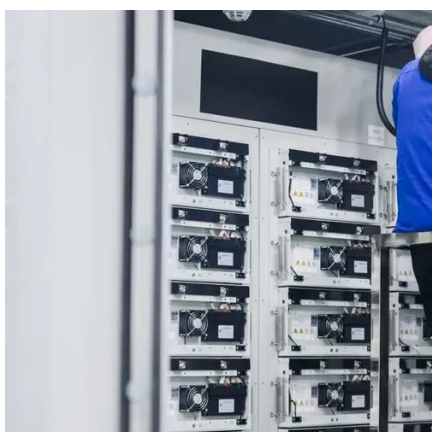
Información completa sobre el índice Dow Jones 30 hoy, (también buscado como índice DJI o indexdix dji). Este resumen incluye datos como el precio actual, último cierre, ...

[The Outdoor Ground Box Supplies Power](#)



[to Outdoor Spaces](#)

Make the most of your outdoor spaces by delivering power, data, or AV connectivity with the new Outdoor Ground Box. Its low-profile design mounts flush with any outdoor ground surface.



[Mobile home panel , Information by Electrical Professionals for](#)

The panel on a mobile home comes from the factory with the ground at panel bonded to the mobile home frame. Mobile homes are typically tied down with metal straps and and tie downs ...

[Gráficos, datos y noticias de Dow Jones Industrial Average \(^DJI\)](#)

Consulta la información más reciente de Dow Jones Industrial Average (^DJI), incluidos datos, gráficos y noticias relacionadas, entre otros, de Yahoo Finanzas



Stock market news for Feb. 5, 2026

U.S. equities fell for another session on Thursday as investors took a risk-off stance, leading popular trades in technology and bitcoin to unravel. The Dow Jones Industrial Average ...

Cotización DOW JONES



Cotización del DOW JONES, información detallada del índice. Gráfico histórico y evolución. Datos actualizados de las acciones y los valores del DOW JONES en tiempo real



ELECTRICAL SERVICE REQUIREMENTS FOR MOBILE HOME ...

The top of the ground rod may be exposed or buried as required to meet the applicable electric codes. Exposed ground rods should be placed so they are not a tripping hazard.



Contact Us

For catalog requests, pricing, or partnerships, please visit:

<https://www.firmaskrzypek.pl>

Phone: +48 22 426 71 90

Email: info@firmaskrzypek.pl

Scan the QR code to access our WhatsApp.

