



Length and width of JinkoSolar 585 photovoltaic panel





Overview

The Jinko 585W panel is a pure example of a prime quality module, with a dimensions of 2278×1134×30mm (89.38 inch) and an efficiency rate of up to 22%. Jinko 585W solar panel (monocrystalline) is among the best in the market, with high efficiency and durability. Bifacial & Double-Glass Adoption: These designs increase energy yield by up to 15% and improve durability in harsh. For wholesale pricing and availability contact your local Greentech Renewables or: Approvals Let us know what you're after through this form or by contacting a location near you and we'll promptly get you a quote with pricing and local availability. We'd love to work with you! Greentech Renewables. Engineered with cutting-edge N-type silicon technology, this module delivers peak efficiency and unmatched reliability by eliminating Light-Induced Degradation (LID) commonly seen in traditional panels. We do our best to provide information such as the JKM585N-72HL4- (V) panel dimensions, datasheet, warranty information, wattage and more wherever possible. Featuring N-Type TOPCon (Tunnel Oxide Passivated Contact) cell technology and a bifacial design, this panel captures sunlight from both the front and



Length and width of JinkoSolar 585 photovoltaic panel

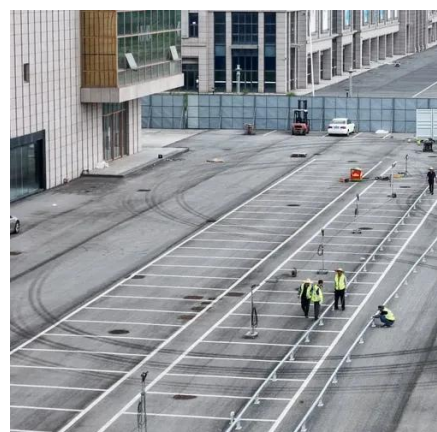
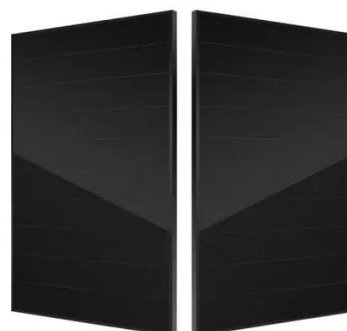


JKM580-605N-72HL4-(V)-F8-EN

N-type modules with Tunnel Oxide Passivating Contacts (TOPcon) technology offer lower LID/LeTID degradation and better low light performance. High salt mist and ammonia resistance. Better light trapping and current ...

Jinko Solar N-Type Solar Panel 565w-585w

*Certified to withstand: wind load (2400 Pascal) and snow load (5400 Pascal) *Excellent Anti-PID performance guarantee via optimized mass-production process and materials control.



585W Solar Panel , Gennex Technologies

The Jinko 585W panel is a pure example of a prime quality module, with a dimensions of 2278×1134×30mm (89.69×44.65×1.38 inch) and an efficiency rate of up to 22.65%.

Jinko Solar 585 Watts Monocrystalline Solar Panel

The Jinko Solar 585W Solar Panel is a high-performance photovoltaic solar. Harnessing Mono-Crystalline technology, it achieves remarkable power output and demonstrates exceptional durability.



[Jinko Solar 585W 144 Half-Cell 1500V N-Type Silver ...](#)

Greentech Renewables supplies Jinko Solar 585W 144 Half-Cell 1500V N-Type ...



JKM585N-72HL4

See the table below for available information we have about Jinko Solar Co Ltd JKM585N-72HL4- (V) solar panels. We do our best to provide information such as the JKM585N-72HL4- (V) panel dimensions, ...



Jinko 585W Solar Panel Dimensions: Size & Specs

Need the exact dimensions of the Jinko 585W solar panel? Discover its size, weight, and compatibility with standard mounts. Click to find top-rated options now!



[Jinko Solar 585W 144 Half-Cell 1500V N-](#)



Type Silver Bifacial Solar Panel

Greentech Renewables supplies Jinko Solar 585W 144 Half-Cell 1500V N-Type Silver Bifacial Solar Panel, JKM585N-72HL4-BDV and other pre-qualified solar equipment from Jinko Solar through our extensive ...



Jinko Solar Panels 585 W , Heavy Duty Solar Panel , Maxima.Solar

Engineered with cutting-edge N-type silicon technology, this module delivers peak efficiency and unmatched reliability by eliminating Light-Induced Degradation (LID) commonly seen in traditional panels.

Jinko N type 585 watt bifacial solar panels

Delivering a robust 585-watt power output, this module is ideal for utility-scale, commercial, and industrial solar projects that demand maximum energy yield and efficiency.



Solar Panel Half-cut N-Type TOPCon 585 Wp

DIMENSION AND WEIGHT Dimension Length 2,278 mm Width 1,134 mm Depth 35 mm Weight 27 kg Panel Area



Contact Us

For catalog requests, pricing, or partnerships, please visit:

<https://www.firmaskrzypek.pl>

Phone: +48 22 426 71 90

Email: info@firmaskrzypek.pl

Scan the QR code to access our WhatsApp.

