



Longi 485 photovoltaic panel





Longi 485 photovoltaic panel



LONGi Solar 485Wp Explorer HPBC Photovoltaic Panel

Built with 108 high-density cells, 3.2 mm tempered glass and a solid anodized aluminum frame, the panel offers excellent durability and mechanical strength. It is ideal for roof installations thanks to its ...

[LONGi Solar 485W Hi-MoX10 HPBC + N-type Mono Solar Module](#)

The LONGi Solar 485W Hi-MoX10 HPBC + N-type Mono Solar Module offers industry-leading efficiency, innovative BC cell tech, and robust European-grade reliability. Ideal for installers, this module ...



**2MW / 5MWh
Customizable**

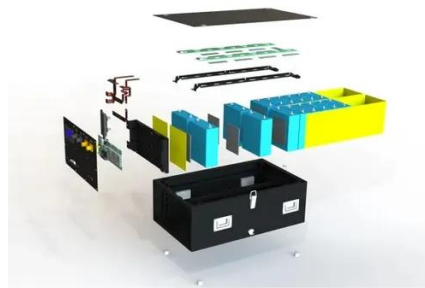


High-efficiency Module, Longi solar module

LONGi launched its mono-PERC modules in 2016, featuring integrated PERC technology on monocrystalline silicon and low light degradation, and its cell efficiency has increased from 21% to ...

[LR7-54HVBB 470-485M \(30-30& 15 Frame\) -BGV02 20250427-EN](#)

Specifications included in this datasheet are subject to change without notice. LONGi reserves the right of final interpretation(. BGV02 20250427)



[Longi 485W Solar Panel \(LR5-66HPH, 480-505 Watt\) - TSolar](#)

The Longi 485W Solar Panel (LR5-66HPH 480-505M) is a high-performance solar module based on M10 Gallium-doped wafers, delivering exceptional energy efficiency. It features 9-busbar half-cell ...

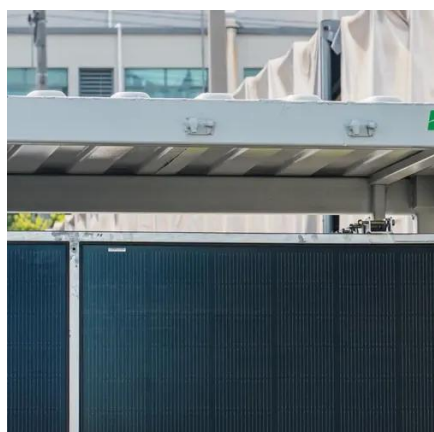
Longi 485Wp Hi-MO5-DUAL-GLASS bifacial solar panel

485 Watt Longi solar panel with 20.6% efficiency, Mono PERC cell, 30 year warranty. Get quote from nearest installer!



[Longi 485W Mono 54-Cell Black Frame Solar Panel - High Efficiency](#)

The Longi LR7-54HVH-485M 485W Mono Solar Panel delivers high performance with advanced monocrystalline PERC technology, ensuring superior efficiency and reliability. Designed with a sleek ...



LONGi Solar Hi-MO X10 54HVH 485W



solar panel

Introducing the LONGi Hi-MO X10 485W solar panel with 23.8 % efficiency, Back Contact design, and 30-year performance warranty. Premium reliability for residential solar projects.



Longi 485W LR7-54HVH-485M BF

The Longi 485W LR7-54HVH-485M BF panel is ideal for a variety of applications, including residential rooftops, commercial solar farms, and industrial energy systems.

[LONGI SOLAR PANEL LONGI HI-MO X10 485W , Photovoltaic Panels](#)

Product class (ETIM) Photovoltaics module (EC001746) Cell material Mono crystalline Number of cells 54 MPP power by STC 485 Wp Max. system voltage 1500 V MPP-voltage 33.4 V Open circuit ...





Contact Us

For catalog requests, pricing, or partnerships, please visit:

<https://www.firmaskrzypek.pl>

Phone: +48 22 426 71 90

Email: info@firmaskrzypek.pl

Scan the QR code to access our WhatsApp.

