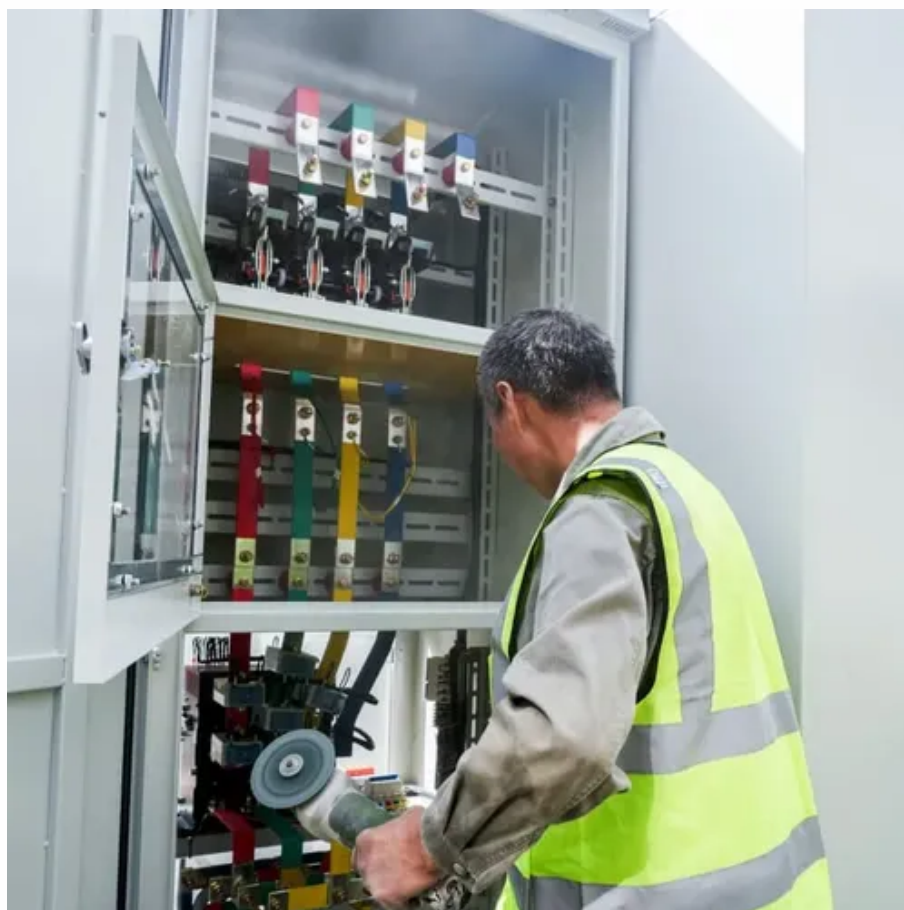




Longi double-glass photovoltaic panel size





Overview

Longi's GEN5 double-glass modules measure 2172×1303×35mm—a size that's arguably become the industry's new normal. But why does this matter?

Well, three key reasons: 1. Racking System Compatibility Most mounting systems now design for Longi's 1303mm width as default. LONGi supplies its reliable, high-performance solar modules to 6 continents and 85 countries and regions to power the world toward a low carbon future. LONGi has laid out several. The glass-glass modules with bifacial technology from LONGi Solar combine high energy yields with a robust design - ideal for PV projects with high demands on service life, stability and yield optimization. Explore technical specs, installation benefits, and why 83% of commercial installers now prefer standardized dimensions. What solar panel modules does.



Longi double-glass photovoltaic panel size



[Longi Double Glass Solar Module 540 Watt 545 Watt 550watt Bifacial](#)

Use this handy reference table to compare the facts. Quickly see the difference in features, performance, warranty and more. Make an informed decision so you know what you are buying. However, these ...

High-efficiency Module, Longi solar module

LONGi had scaled up high-volume manufacturing of bifacial modules and has become the largest producer of bifacial PV products, with cumulative shipments of bifacial modules surpassing 20GW in ...



[Longi Double-Glass Photovoltaic Panel Size Drawings: The Blueprint ...](#)

Meta Description: Discover how Longi's double-glass photovoltaic panel size drawings optimize solar projects. Explore technical specs, installation benefits, and why 83% of commercial installers now ...



LONGi glass-glass bifacial modules

Discover bifacial glass-glass modules from LONGi - for maximum energy yields, extreme resilience and long-lasting performance in demanding PV projects.



LONGI LR7 All Black Double Glass Solar Panels

Superior durability Double-glass construction (2.0 mm + 1.6 mm glass) and BC-cell technology reduce operating temperature, ensuring a longer lifespan.



[Longi Hi-MO 5 Series 540Wp 545Wp 550Wp 555Wp 560Wp Double Glass Solar Panel](#)

We believe that the size of a 182 mm module does not have major mechanical load and reliability consequences, and any increase in module size may bring reliability risks.



[Longi Solar Panels Bifacial Hi-MO 7 LR7-72HGD 585-620M 144 Cells](#)

This bifacial solar panel series is ideal for commercial, industrial, and utility-scale solar projects, offering a combination of high efficiency, cost savings, and long-term reliability.



What are the sizes of LONGI



photovoltaic panels

Over recent years, a battle emerged to develop the world's most powerful solar panel, with many manufacturers developing panels rated well over 600W while others are fast-tracking next-gen large ...



[Longi Solar 166mm Double Glass Solar Modules 445W 450W ...](#)

Cell size 166mmx166mm Type Half Cell, Bifacial, Double-glass, N-TYPE, TOPCON Panel Efficiency 23% Place of Origin

[Longi 435W Hi-MO X6 Dual-Glass - High Efficiency Solar Panel](#)

The Longi Hi-MO X6 Dual-Glass SDM 435W solar panel delivers outstanding efficiency, durability, and long-term performance, making it an excellent choice for both residential and commercial solar ...





Contact Us

For catalog requests, pricing, or partnerships, please visit:

<https://www.firmaskrzypek.pl>

Phone: +48 22 426 71 90

Email: info@firmaskrzypek.pl

Scan the QR code to access our WhatsApp.

