



Maintenance of 5MWh Power Storage Cabinet



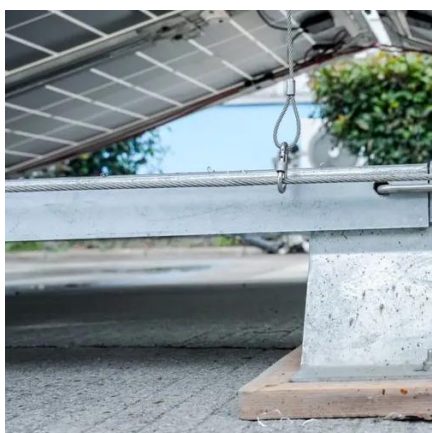


Overview

For instance, a 2023 study by the Global Energy Storage Alliance found that regular maintenance improves system lifespan by 35% and cuts energy waste by up to 18%. Battery Cells: Monitor voltage stability and thermal behavior. Cooling Systems: Prevent overheating with airflow. This document introduces the safety and handling information, features, requirements, service, maintenance and warranty of 5MWh 20ft Liquid-cooling BESS of with the model of 5MWh (hereinafter referred to as 5MWh) in detail. 6300*2438*2896mm, internal cable of battery container. The ns required for the correct use of this product. Before using this product, please read the product manual and corr ctly understand the relevant safety precautions. Failure to comply with the safety precautions may resu ifications, otherwise it may cause malfunctions. The energy storage system supports functions such as grid peak shaving. The Industrial and Commercial (C&I) Energy Storage: Construction, Commissioning, and O&M Guide provides a detailed overview of the processes involved in building, commissioning, and maintaining energy storage systems for industrial and commercial applications. Below we analyze from a user's perspective how it can be deployed.



Maintenance of 5MWh Power Storage Cabinet



[Maintenance plan for outdoor energy storage cabinets](#)

This article delves into the durability of outdoor energy storage cabinets, focusing on their design, materials, and maintenance practices, concluding with key considerations for selecting the

[Energy Storage Cabinet Inspection: A Critical Maintenance Guide](#)

A California installer recently shared with me: "We'd been using the same energy storage cabinet inspection process since 2018. Turns out we'd completely missed three critical firmware update ...



[2.5MW/5MWh Liquid-cooling Energy Storage System Technical Program](#)

The project features a 2.5MW/5MWh energy storage system with a non-walk-in design which facilitates equipment installation and maintenance, while ensuring long-term safe and reliable operation of the ...

All rights reserved ZOE Energy Storage Co., Ltd.

When the equipment malfunctions or is damaged, professionals must follow the maintenance instructions to troubleshoot and repair the equipment and product, and keep maintenance records.



[The BESS System: Construction, Commissioning, and O&M Guide](#)

A comprehensive guide on the construction, commissioning, and operation & maintenance of industrial and commercial energy storage systems.



[Essential Guide to Cabinet Type Energy Storage Compartment ...](#)

Why Cabinet-Type Energy Storage Maintenance Matters Cabinet-type energy storage compartments are the backbone of modern renewable energy systems. Whether used in solar farms, industrial ...



[Can the 5 MWh Energy Storage System Solve Your Power Outage ...](#)

The CTECHI 5 MWh liquid-cooled energy storage DC cabin is designed to do precisely that. Below we analyze from a user's perspective how it can be deployed, what challenges it ...

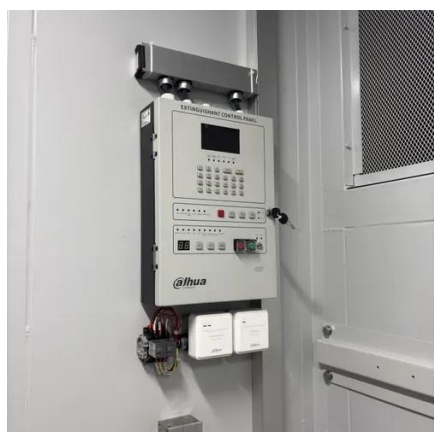


[Why 5MWh Energy Storage Cabinets](#)



Outshine Larger Systems ...

As the energy storage industry rapidly evolves, 5MWh cabinets remain a critical solution despite the rise of 6MWh and 8MWh systems. Here's why they retain competitive advantages and ...

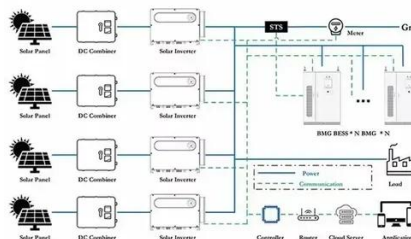


5.01MWh User Manual for liquid-cooled ESS

During fault diagnosis and troubleshooting, the following safety measures must be taken if power failure is required: power failure > Power inspection > Installation of ground cable > Hanging sign plate and ...

5MWh BESS Product Specification

This document introduces the safety and handling information, features, requirements, service, maintenance and warranty of 5MWh 20ft Liquid-cooling BESS of with the model of 5MWh ...





Contact Us

For catalog requests, pricing, or partnerships, please visit:

<https://www.firmaskrzypek.pl>

Phone: +48 22 426 71 90

Email: info@firmaskrzypek.pl

Scan the QR code to access our WhatsApp.

