



Mobile base station battery AH





Mobile base station battery AH



[How to Choose the Right Backup Battery for Telecom Base Stations](#)

Choosing the right telecom base station backup battery is a strategic decision that goes beyond upfront cost. Operators must weigh factors such as voltage requirements, cycle life, ...

[48V 50Ah Mobile Communication Base Station Lithium Iron ...](#)

48v 50Ah mobile communication base station lithium iron phosphate battery cell Model: Fe25Ah/25Ah/3.2V battery Specification: Fe25Ah-15S2P/48V/50Ah nominal Voltage: 48V nominal ...

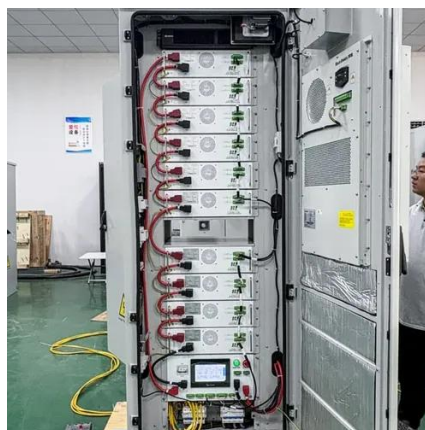


Mobile Base Station Battery Pack Requirements

A base station energy storage battery is a crucial component of telecommunication infrastructure, designed to improve the efficiency and reliability of network operations.

[Telecom Base Station Backup Power Solution: Design Guide for 48V ...](#)

Discover the 48V 100Ah LiFePO4 battery pack for telecom base stations: safe, long-lasting, and eco-friendly. Optimize reliability with our design guide.



[External Bioenno Medium 12v Battery Kit, P/N: BLF-1215AS](#)

Features: Smaller size (6" x 4" x 4" vs traditional car battery 11" x 8" x 7") 12V 15Ah - 180 Watt hours Lighter (4.2 lbs vs traditional car battery weight of 41 lbs) Run Time - Will power a Trimble/Topcon ...



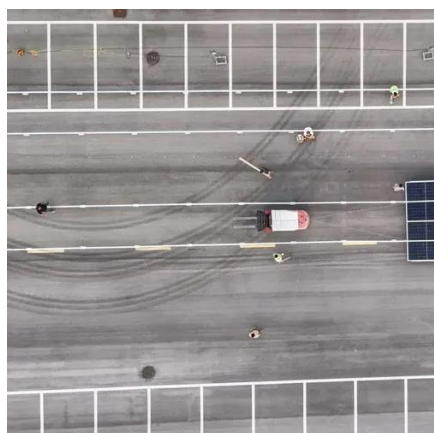
[How to Determine the Right Battery Capacity for Telecom Base Stations](#)

Formula: Capacity (Ah)=Power (W)×Backup Hours (h)/Battery Voltage (V) Example: If a base station consumes 500W and needs 4 hours of backup at 48V, the required capacity is: ...



[CTECHI 5G Telecom Base Station Battery 48V 50Ah Power](#)

CTECHI rack-mounted lithium-ion battery is used together with the most reliable lithium iron phosphate lithium battery, with long life (3000+) and stable performance.



[Front Terminal AGM Batteries](#)



12V180ah/200ah Lead Acid Battery for

AMAXPOWER FT Series Front Terminal Access Slim Battery is specially designed for telecom industry use with 12 years design life in float service. By adopting a new AGM separator and centralized ...



Choosing a 12V Battery for Your Mobile Base Station

To ensure your battery powers your base station for your entire workday, factor in both your daily operational hours and your transmitter's power output when determining the necessary capacity (Ah).



Contact Us

For catalog requests, pricing, or partnerships, please visit:

<https://www.firmaskrzypek.pl>

Phone: +48 22 426 71 90

Email: info@firmaskrzypek.pl

Scan the QR code to access our WhatsApp.

