



Northwest Power Distribution Cabinet for Tunnels 200kW





Northwest Power Distribution Cabinet for Tunnels 200kW



CN104092121A

The invention discloses a floor type power distribution cabinet of a tunnel dedusting car.

POWER DISTRIBUTION PANEL

The 200 KW PDP is designed to accept power at 120/208 VAC, 3-phase, utilizing 400 amp input terminals. Power is then distributed at 120/208 VAC 3-phase through an 800A bus to individual ...



PDP-200KW - PD Power Systems

The PD Power Systems 200KW PDP is designed to accept power at 120/208 VAC, 3-phase, utilizing 400-amp input terminals. Power is then distributed at 120/208 VAC 3-phase using an 800 Amp bus ...

VFI CPM S200K-42U

Modules are installed in special cabinets, which manage synchronized work and parallel operation, resulting in very low Mean Time To Repair (MTTR) and parallel redundancy. Each unit is equipped ...



Transportation Enclosures , Electrical Cabinets & Panels

ETA's weatherproof and industrial-grade enclosures support DOT traffic control, railway signal cabinets, tunnel automation, and smart city power distribution. Built for Demanding Automation Applications.



200kW, 800V, 400A DC-DC Cabinet

The unit is a non-isolated bidirectional 200kW / 800V DC/DC power converter cabinet solution. Flexible design and application with its 800 Vdc maximum voltage on the high voltage side and up to 400 Adc ...



SY200K250DR-PD

A high-performance, 3-phase, modular, scalable, power protection solution with industry-leading efficiency, capacity, and performance for medium to large data centers and mission critical ...

Power cabinet , TUNNEL SUPPLIES



Lighting network usually use 110V power supply, therefore, we designed, specially made for tunnel lighting, distribution board with internal 400V/110V transformer, backup power supply with batteries ...

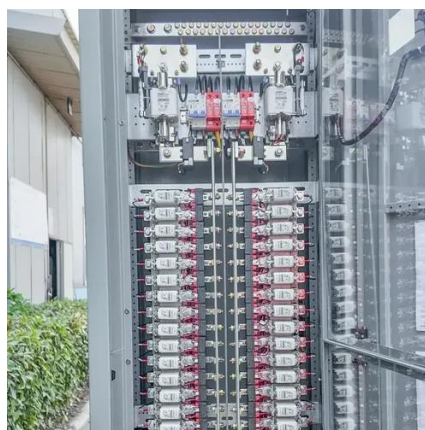


Eaton 93PM UPS accessories distribution brochure

These larger cabinets provide an aesthetically pleasing bypass solution, supporting 2, 3, and 4 breaker configurations with an optional solenoid key release unit (SKRU). Additionally, the IAC-BD allows ...

[Electrical Control Cabinet and Distribution Cabinet for Highway Tunnel](#)

We are a professional company engaged in electrical automation, committed to providing customers with integrated power distribution and automation solutions for high and low voltage electrical control ...





Contact Us

For catalog requests, pricing, or partnerships, please visit:

<https://www.firmaskrzypek.pl>

Phone: +48 22 426 71 90

Email: info@firmaskrzypek.pl

Scan the QR code to access our WhatsApp.

