



# One layer of solar support





## Overview

---

The encapsulant layer in a solar panel is a protective material that surrounds and shields the solar cells. In solar plant construction, selecting the appropriate support structure is crucial. This article provides a detailed comparison of the single-layer cable suspension structure and the double-layer cable truss structure in flexible solar mounting system, outlining their characteristics, advantages. Choosing the right solar panel support structure can mean the difference between a system that lasts 25+ years and one that requires constant maintenance. Most panels include solar cells, tempered glass, encapsulant, a backsheet, a metal frame, an inverter, and a junction box. The solar panel structure components play a crucial role in holding, supporting, and protecting the photovoltaic modules while ensuring they operate at peak performance.



## One layer of solar support

---



### [Solar panel components: A complete guide to every part](#)

Typically made from durable polymer (plastic) materials, this layer protects the cells from moisture and UV exposure while also providing critical electrical insulation and structural support to ...



### **Exploring the Layers of a Solar Panel Structure**

The encapsulant layer in a solar panel is a protective material that surrounds and shields the solar cells. Its primary functions involve enhancing durability, offering mechanical support, and ...

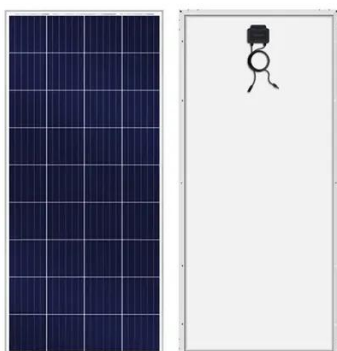
### [How to Choose the Right Support Structure for Your Solar Panels: A](#)

Choosing the right support structure for your solar panels is a multifaceted decision that impacts the efficiency, safety, and longevity of your solar energy system.



### **Project SINAG**

Insulating Backsheet: A layer positioned on the rear side of the solar panel, providing electrical insulation and safeguarding the photovoltaic cells against moisture, physical damage, and environmental factors.



### [The Hidden Backbone of Solar Power: Exploring Solar ...](#)

Discover the poetic structure behind solar energy--from mounts to rails, frames to fasteners--with this complete guide to solar panel structure components.

### [Design and analysis of solar panel support structure](#)

In this research paper, there is consideration about design and analysis of solar panel support structure by considering environmental effect like wind load, structural load and height of structure.



### [Essential Guide to Understanding Solar Panel Layers \(With Expert Tips\)](#)

In this comprehensive guide, we'll take you through each layer of a solar panel, explain how various panel types utilise these layers differently, and provide expert advice on selecting and ...

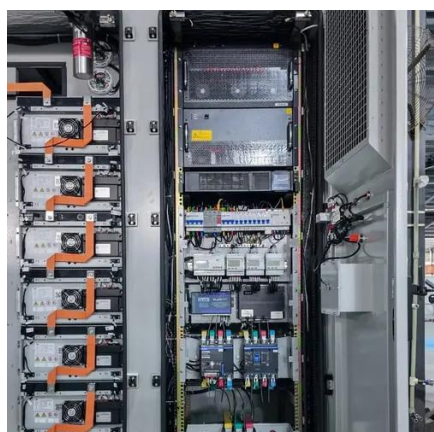


### [Understanding Solar Ground Support](#)



## Systems: Design Variations and

Solar panel ground support structures provide a stable foundation for photovoltaic arrays, offering flexibility across diverse terrains and project requirements.

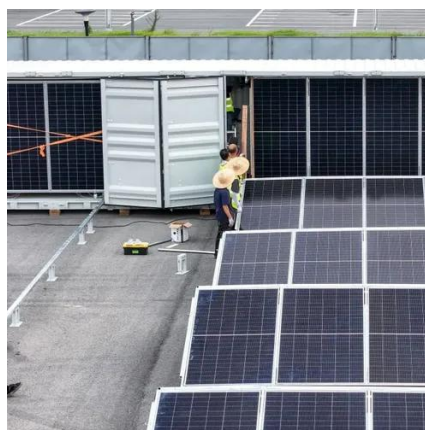


## Flexible Single-layer Cable Suspension Structure VS Flexible Double

The single-layer cable suspension structure consists mainly of a primary steel frame made up of beams and columns, along with diagonal cables and main cables. The cables run parallel to ...

## What is the Best Solar Panel Support Structure? Complete Guide

Discover how to choose the right solar panel support structure for roof, ground or ballasted systems. Learn about wind resistance, certifications & why global clients trust Grace Solar mounting solutions.





## Contact Us

---

For catalog requests, pricing, or partnerships, please visit:

<https://www.firmaskrzypek.pl>

Phone: +48 22 426 71 90

Email: [info@firmaskrzypek.pl](mailto:info@firmaskrzypek.pl)

Scan the QR code to access our WhatsApp.

