



One square meter of polycrystalline silicon photovoltaic panel





Overview

An average polycrystalline panel offers 160 watts per m² for \$140. Thus, the cost per watt for that panel is \$0.94. Solar panels have become a cornerstone of renewable energy, but many wonder: How much power can a single square meter of solar panels actually produce?

Let's break down the science behind photovoltaic efficiency. Under optimal conditions (5 peak sun hours): At noon under direct sunlight: *Note: 1m². Several factors influence the amount of space needed to install polycrystalline silicon PV panels. Let's explore these factors in detail: 1. Higher-wattage panels generally produce more electricity but also. As the monocrystalline panel is compact and has higher efficiency, the price of the solar panel per square meter is much higher than that of polycrystalline panels. Your roof's orientation, local climate, shading, and even the dust on your panels can slash that output by 30-50%.



One square meter of polycrystalline silicon photovoltaic panel



Polycrystalline Solar Panel Specifications

The surface of these solar cells resembles a mosaic which comes under polycrystalline solar panel specifications. These solar panels are square in form and have a brilliant blue color due ...

[How Much Power Does 1 Square Meter of Photovoltaic Panels ...](#)

With advancing photovoltaic technologies, today's 1m² panel generates 40% more power than 2010 models - and the efficiency race continues. Download [How Much Power Does 1 Square Meter of ...](#)



Solar Panel Watts Per Square Meter Explained

Learn how to measure solar panel efficiency using solar panel watts per square meter with this comprehensive guide.



[Polycrystalline Solar Panels: 2026 Costs, Efficiency, Pros & Cons](#)

Before installation, you can expect to pay anywhere from \$0.90 to \$1 per watt for polycrystalline solar panels. However, this price varies based on several factors, such as your ...



Solar Power Per Square Meter Calculator

Calculate solar panel energy output per square meter. Get accurate daily, monthly, and annual production estimates based on location, panel specs, and system losses.

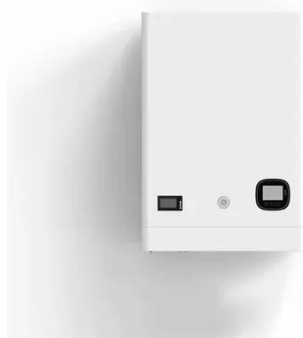
[How much space is needed to install polycrystalline silicon PV panels](#)

On average, a 250 - 300 watt polycrystalline panel may have dimensions of around 1.6 - 1.7 meters in length and 1 meter in width, covering an area of approximately 1.6 - 1.7 square meters.



[Everything you need to know about polycrystalline solar panels](#)

Polycrystalline solar panels are valued for affordability but have their share of drawbacks. Here's what you need to know if you are thinking of installing them.

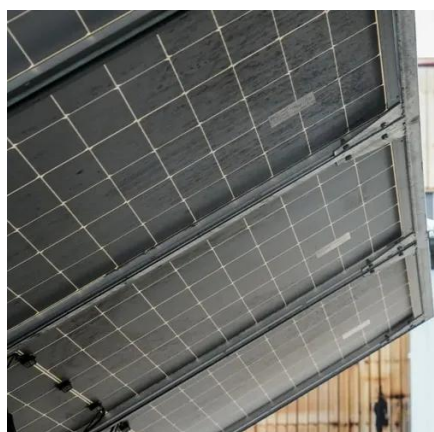


Solar panels per m² costs [2026] -



theCostAdvisor

How much you pay for your new solar panels depends mainly on the number of kWh you want to generate with them. If you prefer to look at the 11 square foot, one panel will occupy an average of 18 ...



[Solar Panel Cost Per Square Meter: Breaking Down Prices and ...](#)

In the United States, a typical solar panel cost per square meter in residential installations is between \$280-\$320 per m² because labor and permission expenses are higher.

Solar Panel Output Per Square Meter

Discover how much electricity solar panels generate per square meter, explore efficiency factors, technology comparisons, and future innovations in photovoltaic energy.





Contact Us

For catalog requests, pricing, or partnerships, please visit:

<https://www.firmaskrzypek.pl>

Phone: +48 22 426 71 90

Email: info@firmaskrzypek.pl

Scan the QR code to access our WhatsApp.

