



Outdoor power supply exceeds rated power





Overview

This article will provide you with an overview of some of the risks associated with operating a power supply outside its specification limits, along with sound strategies for selecting an ideal power supply when confronted with these situations. Overload protection is a safety mechanism integrated into outdoor portable power stations to safeguard against excessive power draw. Two examples — the Polytron UIPCP industrial and MUIPCP medical power supplies — have an open-frame design that takes advantage of free-air convection to keep components cool, and they also offer. Power supplies are rated based on their maximum output power, typically measured in watts (W). This rating indicates the maximum amount of power the supply can provide without overheating or failing. Voltage: Typically 120V or 230V depending on location; voltage multiplied by current determines power in watts. Inverter Efficiency: Most inverters operate at. When planning outdoor projects – whether it's a camping trip, construction site, or solar farm – knowing your power supply's maximum load capacity is like checking your car's fuel gauge before a road trip.



Outdoor power supply exceeds rated power



[What Happens If You Go Over the Power Supply: Understanding the ...](#)

When it comes to electronics and electrical systems, the power supply is a critical component that provides the necessary power for devices to function properly. However, what happens if you go over ...

[Power Supply Operating Limits: A Guide to Voltage, Current](#)

This article will provide you with an overview of some of the risks associated with operating a power supply outside its specification limits, along with sound strategies for selecting an ...



[Understanding Maximum Load of Outdoor Power Supply: A Complete ...](#)

What Is Maximum Load and Why Does It Matter? When planning outdoor projects - whether it's a camping trip, construction site, or solar farm - knowing your power supply's maximum load capacity ...

[Assessing Load Capacity Before Installing Garden Power Outlets](#)

Outdoor outlets must have weatherproof enclosures and GFCI protection due to exposure to moisture and dirt. These safety features might slightly reduce continuous load ratings. Performing ...



[Outdoor power supply FAQ: What does the watt of outdoor power ...](#)

For example, an outdoor power supply with a rated power of 1800W can drive electrical appliances below 1800W. If you want to use electrical appliances with a power of more than 1800W, ...



[Stretching the Limits of Power Supplies: Issues and Answers](#)

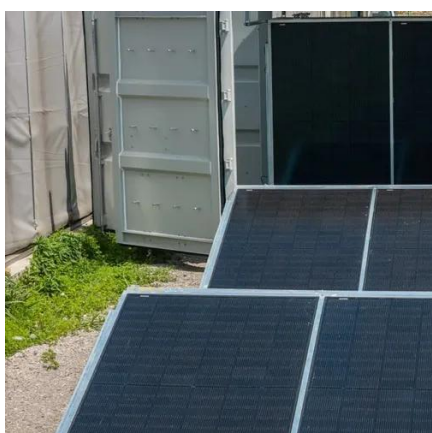
This article will provide you with an overview of some of the risks associated with operating a power supply outside its specification limits, along with sound strategies for selecting an ideal power supply ...



51.2V 150AH, 7.68KWH

Understanding Max Output Ratings in Power Supplies

Power supply ratings refer to PSU specifications like power efficiency, safety and maximum power output. An efficient power supply generates less heat, making more power available. Safety ratings ...



[What Is the Maximum Power Output of an](#)



Outdoor Power Supply?

This guide breaks down the factors that determine maximum power output, real-world applications, and how to choose the right model for your needs. Whether you're a tech enthusiast or a professional in ...



Uninterruptible Power Supply Outdoor

An Uninterruptible Power Supply Outdoor system is designed to bridge these gaps, offering reliability and protection for power-dependent devices in outdoor settings.

Understanding Overload Protection in Outdoor Power Supply

Overload protection is a safety mechanism integrated into outdoor portable power stations to safeguard against excessive power draw. When the total power consumption from ...





Contact Us

For catalog requests, pricing, or partnerships, please visit:

<https://www.firmaskrzypek.pl>

Phone: +48 22 426 71 90

Email: info@firmaskrzypek.pl

Scan the QR code to access our WhatsApp.

