



# Outdoor power supply is placed in the company for charging





## Overview

---

The outdoor power supply is an outdoor multifunctional power supply with a built-in lithium-ion battery and its own electric energy storage, also known as a portable AC or DC power supply. Promote longer stays, better productivity, and an optimal outdoor experience at higher education campuses, offices, parks, patios, and more. It has the characteristics of. Faced with a variety of charging interfaces, voltage standards, and power output options, understanding the advantages and disadvantages of various outdoor charging methods —such as solar charging, car charging, portable power stations, and DC/AC inverters —can help you choose the most suitable and. urse, we are all familiar with golf carts. These and other off-road vehicles have charging requirements that are eas erged and is becoming increasingly common. Such vehicles, especially an electric car or bus. Meta Description: Discover practical methods to charge your company's outdoor power supply efficiently.



## Outdoor power supply is placed in the company for charging



### [Outdoor EV Chargers: Codes, Standards, and Requirements](#)

Sometimes the codes differ for outdoor EV chargers, which are likely to represent most of the public and fleet-charging stations property owners might build. Here's an overview of the building ...

### [Understanding Outdoor Power Stations: All You Need to Know](#)

Learn all about outdoor power stations, their working principle, charging methods, and application scenarios. Get the complete lowdown in one article from Topwell Power.



### [Bringing the Indoors Out: The Ultimate Guide to Outdoor Power and ...](#)

Outdoor power and charging solutions have become more versatile and efficient, catering to the needs of a variety of applications and end-users. Learn how to best select the right outdoor power and ...

## How to choose an outdoor power supply?

Outdoor power supply, actually called outdoor mobile power, is equivalent to a portable charging station. The main feature is the configuration of various types of output ports:



## Outdoor EV Charging: Is it Safe?

Want to have your EV charging station installed outdoors? Not sure if outdoor EV charging is safe? The article is right for you.

## 625 ELECTRIC VEHICLE POWER TRANSFER SYSTEM

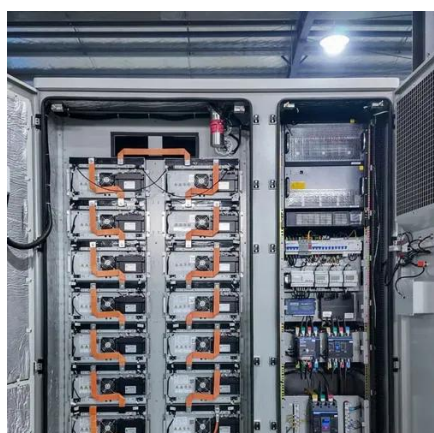
ehicle needs a dedicated charging circuit. Article 625 defines the requirements for the installation of the electrical equipment needed to charge automotive-type electric and hybrid vehicle.

12.8V 200Ah



## [How to Choose the Best Charging Method for an Outdoor Power Supply](#)

For outdoor or mobile use, choose a PD-enabled power bank or solar charging system with stable PD output. With proper power input, the CH4000 delivers safe, fast, and reliable charging ...



## [Portable Outdoor Power Supply Charging](#)



## Solutions for Corporate

Looking for reliable power solutions during corporate outdoor events or remote operations? Discover how portable outdoor power supplies revolutionize workplace efficiency.

**LPR Series 19'  
Rack Mounted**



## How to Charge Your Company's Outdoor Power Supply: A Step-by ...

Charging your company's outdoor power supply doesn't have to be rocket science. Match the method to your needs, prioritize safety, and stay updated on industry innovations.



## The Ultimate Guide to Tesla Charger Outdoor Installation

For your Tesla charger outdoor installation needs, consider Tapps Electric. Our team understands the process of installing commercial Tesla chargers and will carry out your work with the ...





## Contact Us

---

For catalog requests, pricing, or partnerships, please visit:

<https://www.firmaskrzypek.pl>

Phone: +48 22 426 71 90

Email: [info@firmaskrzypek.pl](mailto:info@firmaskrzypek.pl)

Scan the QR code to access our WhatsApp.

