



Photovoltaic array support foundation design





Overview

In this article, we will delve into the crucial aspects of ground preparation and foundation for solar panel arrays, ensuring the longevity and efficiency of your solar power system. The selected solar panel is known as Top-of-Pole Mount (TPM), where it is designed to install quickly and provide a secure mounting structure for PV modules on a single. Solar panel foundation design requirements depend on multiple factors including mounting structure height, EPA values, soil conditions, and local wind load requirements. Understand how project scale, cost, installation convenience, adjustability, maintenance, and environmental considerations shape the choice of the most suitable foundation type for both ground-mounted.

Understanding Solar Ground Support Systems: Design Variations and Benefits Solar panel ground support structures provide a stable foundation for photovoltaic arrays, offering flexibility across diverse terrains and project requirements.

Additionally, when designing the PV array, the lower edge of the array should maintain a height of 30–50 cm above the ground or roof to prevent obstruction by.



Photovoltaic array support foundation design



Solar Pole and Foundation Design

At Exactus Energy, we specialize in providing thorough solar pole and foundation designs to set you up for success through installation and beyond. Solar pole structures are foundational ...

[Solar Panel Foundation Design Guide , Installation & Engineering](#)

Key considerations for solar installations include foundation depth (typically 1/6 of pole height plus 2 feet), concrete strength, reinforcement design, and soil bearing capacity. Proper ...



[Ground Preparation and Foundation for Solar Panel Arrays](#)

In this article, we will delve into the crucial aspects of ground preparation and foundation for solar panel arrays, ensuring the longevity and efficiency of your solar power system.



**200kWh
Battery Cluster**

[Photovoltaic Power Plant Array Foundation and Support Structure Design](#)

Optimizing the structural design of the support and foundation not only satisfies the installation and operational requirements of the modules but also significantly reduces the investment in supports ...



Photovoltaic support foundation structure drawings

The information contained in this application note is intended to provide designers of First Solar PV module mounting and support systems with both minimum requirements and



[Understanding Solar Ground Support Systems: Design Variations and](#)

Understanding Solar Ground Support Systems: Design Variations and Benefits. Solar panel ground support structures provide a stable foundation for photovoltaic arrays, offering flexibility ...



[Photovoltaic System Foundations: Key Factors for Optimal Selection](#)

Understand how project scale, cost, installation convenience, adjustability, maintenance, and environmental considerations shape the choice of the most suitable foundation type for both ...



[Installation of cement pier for](#)



photovoltaic support base

How is a ground mounted PV solar panel Foundation designed? This case study focuses on the design of a ground mounted PV solar panel foundation using the engineering software program spMats.

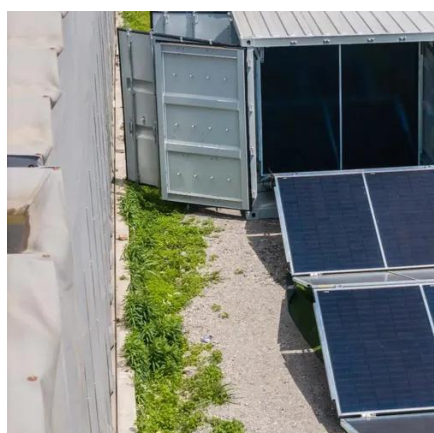


Ground Mounted PV Solar Panel Reinforced Concrete Foundation

All the information provided by the solar panel provider are shown in the following figure and design data section and will serve as input for detailed foundation analysis and design.

Solar Pile and Foundation Design

At Exactus Energy, we specialize in providing thorough solar pile and foundation designs to set you up for success through installation and beyond. Solar pile structures are foundational components ...



Photovoltaic module support and foundation design

The current failure patterns of solar module mounting structures (MMS) are analyzed and the design deficiencies related to tilting, stability, foundation, geotechnical issues, tightening clamps, ...



Contact Us

For catalog requests, pricing, or partnerships, please visit:

<https://www.firmaskrzypek.pl>

Phone: +48 22 426 71 90

Email: info@firmaskrzypek.pl

Scan the QR code to access our WhatsApp.

