



Photovoltaic bracket C type structure diagram





Photovoltaic bracket C type structure diagram



[Photovoltaic bracket installation process structure diagram](#)

Based on the research characteristics of the C-shaped steel structure of the photovoltaic agricultural greenhouse, the stress and strain under the design load of the solar

[Photovoltaic bracket C-type steel structure specification](#)

In order to respond to the national goal of "carbon neutralization" and make more rational and effective use of photovoltaic resources, combined with the actual photovoltaic substation project, ...



[Photovoltaic Bracket Structure Explained: Diagrams & Insider Tips](#)

Let's face it - photovoltaic brackets are like the unsung heroes of solar energy systems. While everyone oohs and ahhs over shiny solar panels, these structural workhorses literally carry the weight.

Photovoltaic bracket c type drawings

PV brackets can be divided into three types: fixed, tilt-adjustable, and auto-tracking type, and its connection method generally has two forms of welding and assembly.

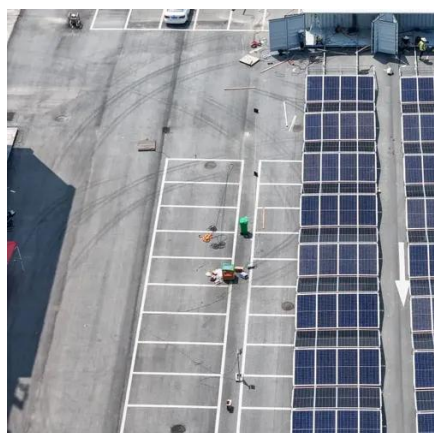


Components and classification of solar photovoltaic brackets

Solar photovoltaic brackets come in two main types--fixed and adjustable. Fixed brackets are designed to hold the solar panels at a predetermined angle, typically suitable for regions ...

Common models of photovoltaic bracket C-shaped steel

C-channel steel is a shape of steel section with a C-shaped cross-section, given by a vertical web and two horizontal parallel flanges that extend to only one side of the web.



Solar cell bracket structure diagram

Schematic diagram of the structure of solar cells showing all the layers, including n-type and p-type layers in the configuration, with a close-up view of the depletion zone around the junction

Introduction to the c-type



photovoltaic bracket

It is therefore essential to select the most appropriate type of photovoltaic bracket, taking into account the specific requirements of the project, the geographical location, climate conditions and budget, in ...



Photovoltaic bracket selection design drawings

This paper summarizes the commonly used forms of bracket foundations, analyzes their design points, and introduces the selection and design of several typical photovoltaic power station

[Photovoltaic bracket and accessories explanation diagram](#)

Under three typical working conditions, the maximum stress of the PV bracket was 103.93 MPa, and the safety factor was 2.98, which met the strength requirements; the hinge joint of 2 rows





Contact Us

For catalog requests, pricing, or partnerships, please visit:

<https://www.firmaskrzypek.pl>

Phone: +48 22 426 71 90

Email: info@firmaskrzypek.pl

Scan the QR code to access our WhatsApp.

