



Photovoltaic panel fixing C-shaped steel





Overview

The C-shaped steel ground mounting system is a robust and versatile solution designed specifically for installing solar photovoltaic panels on the ground. Here's a detailed. Length is cut according to customer's requirements. We are a R&D, manufacturer of solar mounting system with more than 20 years of experience, with professional technology, production and customer service team. Why Proper Specification of C-Shaped Steel Matters for Solar Installations?

Did you know that nearly 23% of solar project delays stem from improper structural support specifications?

As solar installations expand globally, the C-shaped steel used in photovoltaic (PV) support systems has become a. Which C-type steel photovoltaic brackets in solar photovoltaic power generation systems. The general materials are aluminum alloy, carbon steel and stainless steel., abbreviated as "Tianjin Wenli", was established in 2012 and is located in the Daqiu Zhuang Industrial Development Zone, a steel base in Tianjin.



Photovoltaic panel fixing C-shaped steel



[Which C-type steel photovoltaic bracket is reliable](#)

In short, the photovoltaic fixed and adjustable bracket is an efficient, reliable and flexible photovoltaic support structure, which is of great significance for improving the power

[Photovoltaic bracket C-shaped steel specification table](#)

We are a physical factory specializing in the production of photovoltaic brackets, earthquake-resistant brackets, cable brackets, and punched C-shaped steel .



[What Makes C-Shaped Steel Ground Mounts Ideal for Solar ...](#)

Single-axis & dual-axis tracking- Improves solar panel efficiency by following the sun's path.
Retrofitting existing mounts- Allows upgrades without replacing the entire structure.

[Solar Photovoltaic Support C-Shaped Steel Specification Manual: A](#)

As solar installations expand globally, the C-shaped steel used in photovoltaic (PV) support systems has become a critical component. Let's break down why getting these specifications ...



STEEL PROFILES FOR SOLAR MOUNTING SYSTEMS -C SHAPE

Our products are delivered as drilled, shaped, cut to desired length and galvanized in accordance with the demands of our customers in our fully automatic lines.

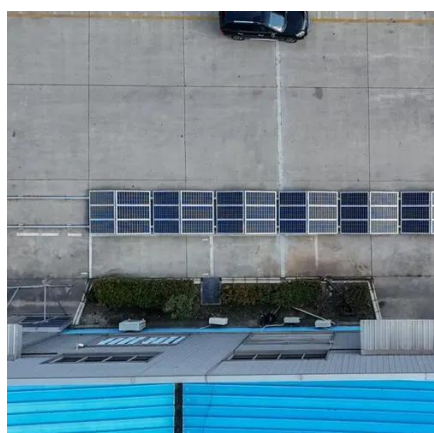
C-shaped steel ground mounting

The C-shaped steel ground mounting system is a robust and versatile solution designed specifically for installing solar photovoltaic panels on the ground. This system plays a crucial role in maximizing ...



Solar Installation Bracket With C-shaped Steel for Fixing Photovoltaic

We have our own factory with an area of 150,000 square meters, producing a full range of solar photovoltaic products. For both sample orders and large orders, we can guarantee timely delivery.

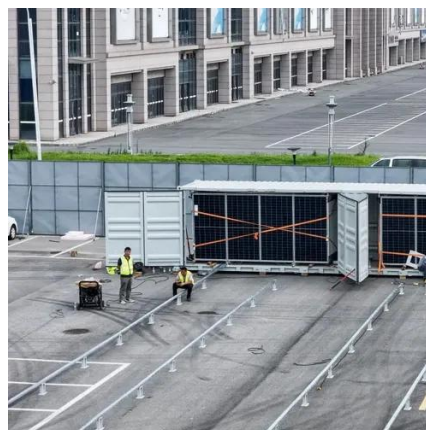


Is C-Shaped Steel the Most Reliable



Option for Your PV Installation?

C-shaped steel, also known as C-channel steel, is a roll-formed structural profile widely used in solar ground mounting systems. It gets its name from its cross-sectional shape, resembling the letter "C".



C-Shaped Steel Fixing Reinforcement Component

C-Shaped Steel Fixing Reinforcement Component, Find Details and Price about Solar Panel Bracket Photovoltaic Support Frame from C-Shaped Steel Fixing Reinforcement Component - Tianjin Wenli ...

C-shaped steel photovoltaic panel fasteners

SOEASY carbon steel photovoltaic carport system combines photovoltaic power generation with carport, which not only meets the requirements of sheltering vehicles from wind and rain, but





Contact Us

For catalog requests, pricing, or partnerships, please visit:

<https://www.firmaskrzypek.pl>

Phone: +48 22 426 71 90

Email: info@firmaskrzypek.pl

Scan the QR code to access our WhatsApp.

