



Photovoltaic panel sun room edging



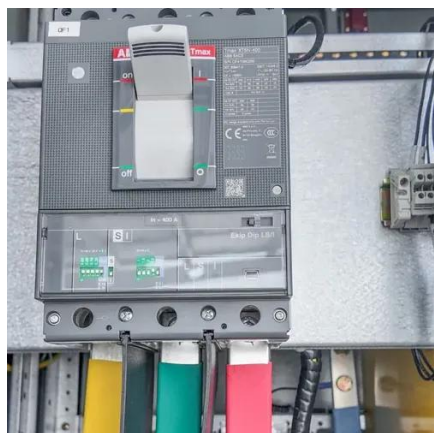


Overview

These guards are strips of metal screening secured to the outside of the solar panels. IronRidge Contour[®] Trim elevates the look of any solar array by providing a sleek trim (or skirt) across the bottom edge to hide components that are visible beneath the solar panels. Homeowners want the solar on their home to meet their energy needs, while not detracting from their home's. The Edge Right edging is really a nice quality product and fairly easy to install. End result is much better than the cheap edging that it replaced. Before and after photos attached! Shelley replaced flimsy edging around her ground-mount solar array with Edge Right 8 inch Cor-Ten hammer-in strips. A sunroom is a modern architectural design that not only enhances the comfort of a home but also provides an ideal location to fully utilize solar energy. Recently, we completed an innovative photovoltaic system in a sunroom project, providing power for lighting, air conditioning, and various small. If you're considering adding solar panels to your roof, this article explores how much energy you could potentially save by installing them on your existing sunroom. Installing solar panels in a sunroom requires careful consideration of specific factors.



Photovoltaic panel sun room edging



[Solar Panel Sunroom: Energy-Efficient Design Ideas for Your Home](#)

Let's investigate how putting solar panels in your sunroom may make the area more energy-efficient. Sunrooms with and without solar panels will be compared, energy use and upfront ...

[Four Solar Installation Enhancements You Should Consider](#)

These guards are strips of metal screening secured to the outside of the solar panels. The edging creates a barrier that prevents small animals from entering the spaces surrounding your system.



[Solariums, Glass Rooms, Spa & Pool Enclosures, Patio Enclosures](#)

It covers all manufacturers' products, including glass, roof panels, framing, seals and more. Patio Enclosures takes every step to ensure your sunroom will perform for a lifetime.

Edge Right Cor-Ten Edging Defines Solar Panel Bed

Shelley replaced flimsy edging around her ground-mount solar array with Edge Right 8 inch Cor-Ten hammer-in strips and a 90 degree corner connector. Installatio



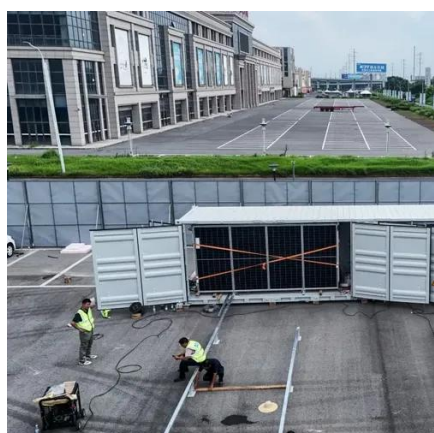
Guide to Adding Solar Panels to Sunroom

If you're considering adding solar panels to your roof, this article explores how much energy you could potentially save by installing them on your existing sunroom.



[Are Photovoltaic Panels in Sunrooms Actually Worth the Hype? Let's](#)

That's the promise of integrating photovoltaic (PV) panels into sunrooms - but does this marriage of aesthetics and energy efficiency actually work? Let's cut through the solar jargon and explore what ...



Contour(TM) Trim

IronRidge Contour ® Trim elevates the look of any solar array by providing a sleek trim (or skirt) across the bottom edge to hide components that are visible beneath the solar panels.

Solar panel trim - Shneyder Solar



To install solar panel trim, you need to prepare the area, gather your tools, and follow a simple step-by-step guide for fitting the trim onto your solar panels.

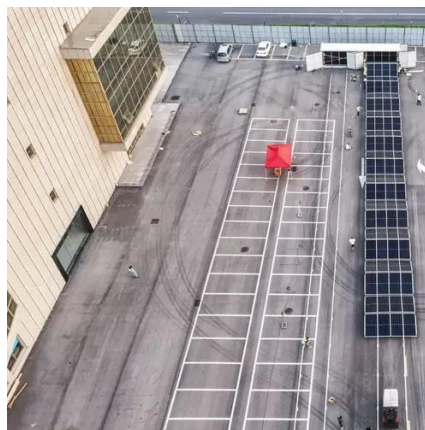


[How to install solar panels in a sun room, NenPower](#)

Different roofing materials have varying impacts on solar panel installation. Glass roofs, commonly found in sunrooms, can complicate the installation process, necessitating specialized ...

Photovoltaic System for a Sunroom

Recently, we completed an innovative photovoltaic system in a sunroom project, providing power for lighting, air conditioning, and various small household devices on the balcony. Here is a detailed ...





Contact Us

For catalog requests, pricing, or partnerships, please visit:

<https://www.firmaskrzypek.pl>

Phone: +48 22 426 71 90

Email: info@firmaskrzypek.pl

Scan the QR code to access our WhatsApp.

