



Photovoltaic panels generate less electricity in summer





Overview

In winter, panels may produce less due to shorter days and lower sun angles, while in summer they may produce more due to longer days and higher sun angles. Factors such as cloud cover and temperature can also play a role. The output of a solar panel is dependent on the amount of sunlight that it. Direct lighting strikes can cause a sudden voltage surge which can damage the solar panels and other components. These are the factors influencing a solar panel's output- 1.

Atmospheric Conditions Winter. Solar panels generate electricity year-round, but their output varies dramatically between seasons.



Photovoltaic panels generate less electricity in summer



Solar Panel Output Winter vs. Summer

Winter months generally result in lower solar panel output due to reduced sunlight intensity, shorter days, and potential cloud cover. Summer months offer increased sunlight intensity, longer days, and ...

[Seasonal Solar Output: Spring, Summer, Fall, & Winter Guide](#)

There are a variety of small ways in which the given season can affect how much sun your panels are actually absorbing, so let's lay them out. In the winter, the sun is lower in the sky due to the tilt of ...

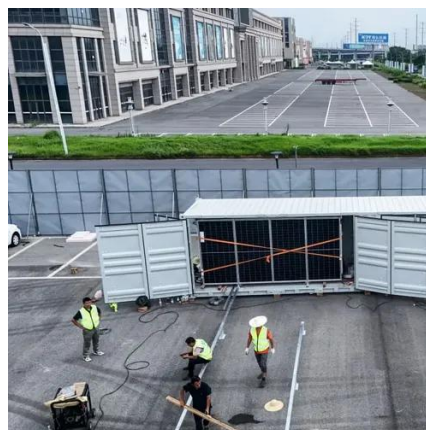


[Solar panels performance in the winter vs summer \(with examples\)](#)

It turns out that you might get your best solar energy output in the spring, and not the summer as you might think. This is because that solar panels produce less electricity when it's hot.

Solar Panel Output: Summer vs Winter Production

During summer, higher solar production often leads to reduced reliance on grid power and lower electricity bills. In contrast, winter's reduced solar output typically increases grid usage, raising ...

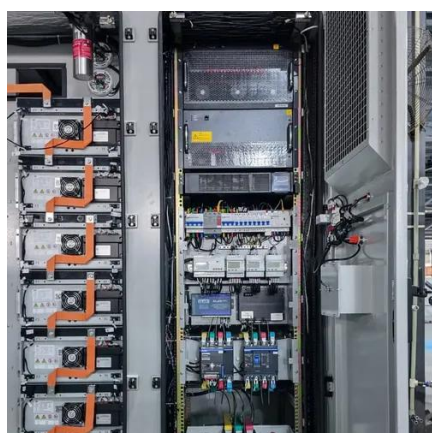


Solar Panel Output Winter Vs Summer

Solar Panel Output Winter Vs Summer: During winters, the optimum power generation level of the solar panel is lower than that of summers.

[Seasonal Solar FAQ: Output in Winter, Monsoon, and Summer](#)

Winter brings shorter daylight hours and a lower sun angle, impacting solar panel output. Despite these changes, your panels continue to generate electricity. Cold temperatures, surprisingly, ...



[Is Seasonality Influencing Solar Panel Production? , Power Home](#)

The extended daylight hours in summer favor prolonged efficient operation of solar panels, thereby increasing the total power generation. Although summer provides intense sunlight, high ...

[Solar Panel Output Winter Vs Summer](#)



(The Best Season for Output)

Yes, solar panels do produce less in hot weather. The main reason for this is that the heat makes the silicon inside the solar panel less efficient at converting sunlight into electricity. ...



Solar Panel Performance: Winter vs Summer (Guide 2023)

In the winter, solar panels can perform better on colder, sunnier days. On the other hand, in the summer, solar panels may be subject to efficiency losses because of high temperatures. While ...

Solar Performance in Winter, Spring, and Fall Compared to Summer

At a 60° angle, the production fall-off in summer is so great that winter, spring, and fall all produce more energy than summer. The production difference ranges from 4%-20% depending on ...





Contact Us

For catalog requests, pricing, or partnerships, please visit:

<https://www.firmaskrzypek.pl>

Phone: +48 22 426 71 90

Email: info@firmaskrzypek.pl

Scan the QR code to access our WhatsApp.

