



Photovoltaic panels installed in the ditch





Overview

The idea is simple: install solar panels over canals in sunny, water-scarce regions where they reduce evaporation and make electricity. PV wire doesn't seem like a big deal, but moving generated power from solar panels to the electrical grid would be impossible without it. To the untrained eye, installing thousands of feet of wire seems like a pretty straightforward process. 5mm: Overall dimensions (L*W*H) 6,000*2,320*2,000mm: Voltage: AC 380V, 3 phase: Power: 5kW: Air. Research indicates inadequate drainage can reduce energy output by up to 18% and significantly accelerate panel degradation, eroding the return on investment for solar farms. Water pooling creates reflective surfaces, encourages dust and sediment adhesion, fosters vegetation growth shading panels.



Photovoltaic panels installed in the ditch



A Guide to Residential Ground-Mounted Solar Panels

Explore the advantages of residential ground-mounted solar panels, including installation tips and how they compare to rooftop systems in our detailed guide.

[Installing PV Wire: Direct Burial, Hangers, or Conduit?](#)

Depending on the situation, solar EPCs have a few installation options, including direct burial, conduit, and hangers. When solar developers directly bury PV wires, they install them in ...

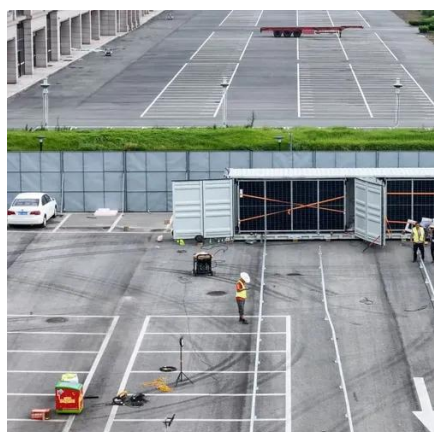


The Complete Guide to Backyard Solar Panels

Explore our in-depth guide to backyard solar panels. Understand types, benefits, installation, and maintenance for 2023's solar solutions.

[Solar Farm Drainage - Protecting Renewable Energy Investments](#)

This article details specialized, engineered drainage solutions designed explicitly to protect photovoltaic assets and optimize the long-term performance of renewable energy investments.

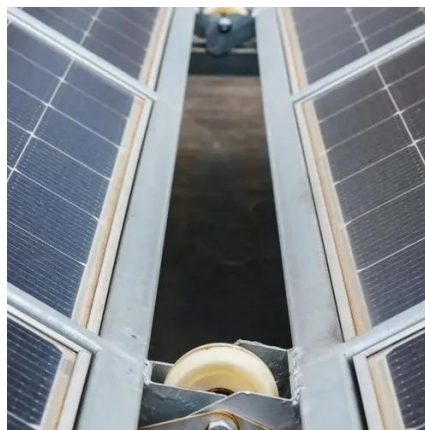


DIY PV System -

This page covers the layout and digging of the trench for the underground wiring from the meter/distribution panel location on the house to PV panel array out in the yard.

[Ditch solar panels; embrace the future with a 2 kW fence](#)

Say goodbye to solar panels! Discover the innovative photovoltaic fence generating 2 kW in your garden. Embrace the future today!



[Install a water ditch under the photovoltaic panels](#)

A standard change from the International Association of Plumbing and Mechanical Officials will allow for a sophisticated new design concept that allows PV installers to place panels above existing ABS ...

Ditch photovoltaic panel laying



Flat solar photovoltaic (PV) panels are installed directly on the ground without the need for supporting structures or poles used with traditional panel systems.



[Step-by-Step: How Floating Solar Panels Are Installed](#)

Learn how to assess water bodies, design a stable floating platform, anchor the system, and connect panels to the grid. From site selection to maintenance tips, this guide covers every step ...

[Solar panels built over water canals seem like a no-brainer. So why](#)

The idea is simple: install solar panels over canals in sunny, water-scarce regions where they reduce evaporation and make electricity.





Contact Us

For catalog requests, pricing, or partnerships, please visit:

<https://www.firmaskrzypek.pl>

Phone: +48 22 426 71 90

Email: info@firmaskrzypek.pl

Scan the QR code to access our WhatsApp.

