



# Photovoltaic support design wind pressure standard





## Photovoltaic support design wind pressure standard

---

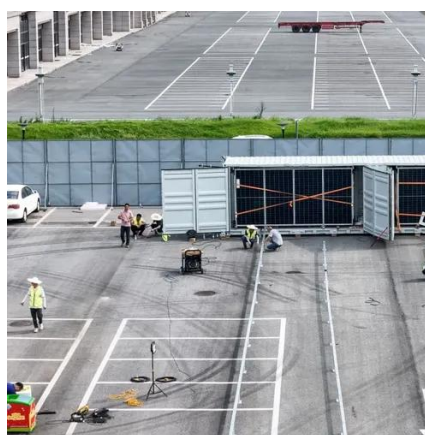


### [Solar Panel Wind Load Calculation ASCE-7-16 , SkyCiv](#)

A fully worked example of Ground-mounted Solar Panel Wind Load and Snow Pressure Calculation using ASCE 7-16.

### [Solar Panel Wind Load Guide , ASCE 7-16 & 7-22 , Rooftop & Ground-Mount PV](#)

Complete guide to solar panel wind load calculations per ASCE 7-16 and ASCE 7-22. Learn GC<sub>r</sub>n coefficients, roof zones, ground-mount provisions (Section 29.4.5), and design wind ...



### **Wind Load , PVQAT**

Wind Load: Task Group 7 Task Group 7 focuses on potential international standards that provide a test method for evaluating the effects of non-uniform wind loads on photovoltaic (PV) ...

### [Specifications for wind resistance design of photovoltaic panels](#)

The pressure field on the upper and lower surfaces of a photovoltaic (PV) module comprised of 24 individual PV panels was studied experimentally in a wind tunnel for four different wind directions.



## Photovoltaic support wind resistance measures plan

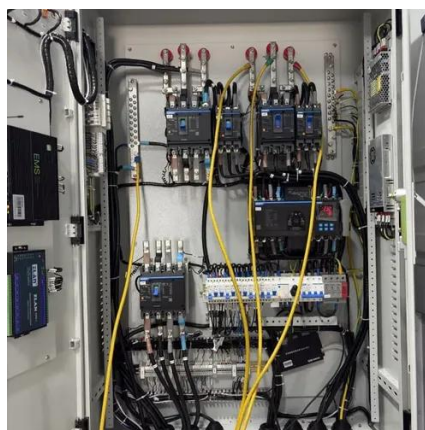
There is a necessity to extend the application of CFD method to flows around roof-mounted PV array. This study investigated the wind pressure distributions on PV arrays mounted on ...



## PHOTOVOLTAIC SUPPORT WIND LOAD

## Wind pressure characterization on ground-mounted solar PV ...

This study's main scientific contribution is the establishment of practical, verified design wind pressure coefficients for massive ground-mounted PV arrays, which closes a significant gap in ...



## Photovoltaic support pressure

When the flexible PV support structure is subjected to wind pressure, the maximum of mean vertical displacement occurs in the first rows at high wind speeds. The shielding effect greatly affects the wind ...



## CALCULATION

How to calculate solar panel wind load? The wind calculations can all be performed using SkyCiv Load Generator for ASCE 7-16 (solar panel wind load calculator). Users can enter the site location to get ...



### [Photovoltaic support design wind pressure considerations](#)

The wind load is the most significant load when designing a PV support; thus, its value and calculation should be investigated. Different countries have their own specifications and, consequently, equations ...

### [Design Storm-Resistant Solar: ASCE 7-22 Wind Load Standards](#)

The ASCE 7-22 wind pressure formula is used to calculate design loads for solar installations. It consists of four key components:  $\text{Wind Pressure} = \text{Velocity Pressure} \times \text{External} \dots$





## Contact Us

---

For catalog requests, pricing, or partnerships, please visit:

<https://www.firmaskrzypek.pl>

Phone: +48 22 426 71 90

Email: [info@firmaskrzypek.pl](mailto:info@firmaskrzypek.pl)

Scan the QR code to access our WhatsApp.

