



Pile-type photovoltaic support installation

 **TAX FREE**

ENERGY STORAGE SYSTEM

Product Model
HJ-ESS-215A(100KW/215KWh)
HJ-ESS-115A(50KW 115KWh)

Dimensions
1600*1280*2200mm
1600*1200*2000mm

Rated Battery Capacity
215KWH/115KWH

Battery Cooling Method
Air Cooled/Liquid Cooled





Overview

Pile driving, the process of installing steel posts into the ground to support racking systems and solar modules, is one of the most critical steps in solar farm construction. The durability, accuracy, and efficiency of pile installation directly impact the long-term performance. This guide is tailored for pile driving contractors and engineers involved in solar farm projects—providing an in-depth exploration of the techniques, materials, and challenges associated with pile driving in this growing sector. As the demand for renewable energy increases—solar farms are becoming. Utility-scale solar projects are only as strong as the foundations they are built on. A well-selected foundation ensures structural stability, installation efficiency, and long-term reliability.



Pile-type photovoltaic support installation



[Photovoltaic pile support installation specifications](#)

The Installation Process. The installation of a solar carport is a systematic process that involves constructing the support structure, installing the photovoltaic panels, and

[Driven Pile Foundation For Solar: Costs, Use Cases, Pros & Cons](#)

Driven pile foundations provide a stable base for solar panels. They are particularly cost-effective and adaptable in large-scale solar farms, commercial projects, and residential applications. Initial ...



[Photovoltaic support installation cast-in-place piles](#)

As the demand for renewable energy increases--solar farms are becoming an ideal market for pile driving contractors due to the need for stable, long-lasting foundations that can support large-scale ...



[Foundations of Solar Farms: Choosing the Right Piles and Installation](#)

In solar farm construction, the choice of pile driving techniques is crucial not only for ensuring the structural integrity of the installation but also for optimizing efficiency and minimizing ...



[How to Choose the Right Solar Ground Mounting Foundation: ...](#)

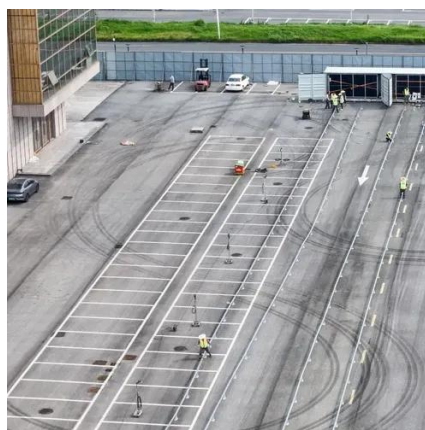
In today's solar market, Concrete Foundations, Ground Screws, and Pile-Driven (Ramming) Systems are the three most common solutions. Each has its own advantages depending ...



[Prefabricated pipe pile photovoltaic](#)

[Piling for Solar Parks: Building a Sustainable Foundation](#)

One critical aspect of their construction is piling, a process that ensures the stability and longevity of solar panel installations. Let's delve into what piling is, why it's essential, and how it ...



[Pipe Pile Photovoltaic Support Installation: The Future of Solar](#)

As solar farms creep into more "interesting" geological locations, pipe pile photovoltaic support installation is becoming less of an option and more of a survival skill. The question isn't whether to ...



[support installation diagram](#)

The pile-column structure of the bridge can be completed by prefabricated pile foundation, pier, and cap beam based on the integral assembly installation method.



[Pile Driving Best Practices in Utility-Scale Solar Construction](#)

Pile driving, the process of installing steel posts into the ground to support racking systems and solar modules, is one of the most critical steps in solar farm construction. The durability, accuracy, and ...

Solar Pile and Foundation Design

At Exactus Energy, we specialize in providing thorough solar pile and foundation designs to set you up for success through installation and beyond. Solar pile structures are foundational components ...





Contact Us

For catalog requests, pricing, or partnerships, please visit:

<https://www.firmaskrzypek.pl>

Phone: +48 22 426 71 90

Email: info@firmaskrzypek.pl

Scan the QR code to access our WhatsApp.

