



# Power distribution cabinet required for energy storage power station





## Overview

---

A BESS cabinet is an industrial enclosure that integrates battery energy storage and safety systems, and in many cases includes power conversion and control systems. It is designed for rapid deployment, standardized installation, and reliable long-term operation. ABB can provide support during all. This article is a comprehensive, engineering-grade explanation of BESS cabinets: what they are, how they work, what's inside (including HV BOX), how to size them for different applications (not only arbitrage), and how to choose between All-in-One vs battery-only, as well as DC-coupled vs. Energy storage power station cabinets serve a vital role in modern energy systems, ensuring efficiency and sustainability. Energy storage power station cabinets facilitate the management of stored electrical energy, 2. They integrate advanced technologies for increased reliability, 3. This guide delves into the various types of Power Distribution Cabinets, their characteristics, applications, and the growing relevance of Battery. Featuring lithium-ion batteries, integrated thermal management, and smart BMS technology, these cabinets are perfect for grid-tied, off-grid, and microgrid applications.



## Power distribution cabinet required for energy storage power station



### [What Is an Energy Cabinet and How Does It Work? , SolarInfo](#)

In simple terms, an energy cabinet is an integrated housing for power conversion, distribution, and storage systems. It usually houses: Think of it as a central hub that collects, stores, ...

### **POWER DISTRIBUTION CABINET ENERGY STORAGE**

Battery Energy Storage Systems, or BESS, help stabilize electrical grids by providing steady power flow despite fluctuations from inconsistent generation of renewable energy sources and other disruptions.



### [Energy storage cabinets--best for power management.](#)

Energy storage cabinets are essentially enclosures that house complex battery systems, power conversion electronics, and control mechanisms. They function as reservoirs for electrical energy, ...



### **Utility-scale battery energy storage system (BESS)**

Battery storage systems are emerging as one of the potential solutions to increase power system flexibility in the presence of variable energy resources, such as solar and wind, due to their unique ...



## **BESS CABINET**

A BESS cabinet is an industrial enclosure that integrates battery energy storage and safety systems, and in many cases includes power conversion and control systems.

## **Power Distribution Equipment**

Power Distribution Equipment is a term generally used to describe any apparatus used for the generation, transmission, distribution, or control of electrical energy.



## [How to Select the Right Power Distribution Cabinet for Your Plant](#)

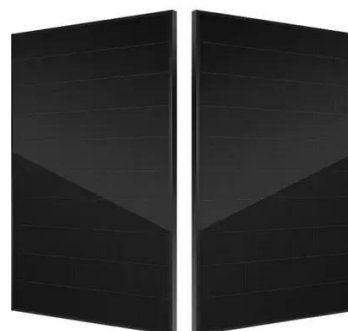
Looking for certified, customizable power distribution cabinets that align with your project requirements? Contact our team today to request a datasheet, quotation, or technical consultation.

## [What are the energy storage power](#)



## [station cabinets?](#)

Energy storage power station cabinets primarily comprise energy management systems that optimize energy usage within electric grids. These installations come equipped with various ...



## **Comprehensive Guide to Power Distribution Cabinets**

This guide delves into the various types of Power Distribution Cabinets, their characteristics, applications, and the growing relevance of Battery Distribution Cabinets in today's ...

## [All-in-One Energy Storage Cabinet & BESS Cabinets , Modular, ...](#)

Featuring lithium-ion batteries, integrated thermal management, and smart BMS technology, these cabinets are perfect for grid-tied, off-grid, and microgrid applications. Explore reliable, and IEC ...





## Contact Us

---

For catalog requests, pricing, or partnerships, please visit:

<https://www.firmaskrzypek.pl>

Phone: +48 22 426 71 90

Email: [info@firmaskrzypek.pl](mailto:info@firmaskrzypek.pl)

Scan the QR code to access our WhatsApp.

