



# Regular photovoltaic panel slope photovoltaic





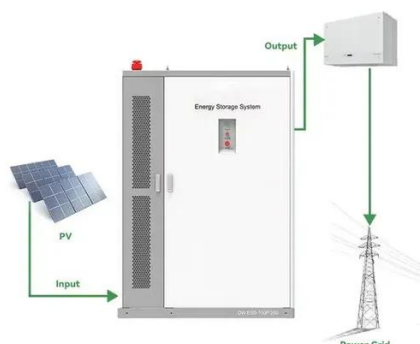
## Overview

---

The appropriate slope for solar panels is typically between 30 to 45 degrees, but it can vary depending on latitude, desired energy efficiency, and local climate conditions. The angle of installation plays a critical role in optimizing the sunlight absorption throughout the year. Most homeowners should choose the Year-Round angle. Being 5-10 degrees "flatter" than perfect is often better for self-cleaning (rain washing) than being too steep. This guide explains how roof pitch, geographic location, seasonal sun angles, and mounting strategies determine the ideal tilt for photovoltaic (PV) systems in the United States. This refers to how the inclination of the ground influences the positioning and performance of the panels. For example, in. Under optimized solar panel positioning, your system collects radiation from the sun to create peak energy output, which directly reduces your power expenses. Many people seek the optimal roof slope for solar.



## Regular photovoltaic panel slope photovoltaic



### What Is the Minimum Roof Pitch for Solar Panels?

The minimum roof pitch for solar panels is generally 5°, but panels can be installed on even flatter surfaces with the help of elevated racking systems. What matters most is choosing the ...

### Base Slope

Base slope effect describes the phenomenon observed in solar panels that are installed on sloping terrain. This refers to how the inclination of the ground influences the positioning and performance of ...



### [Roof Slope Considerations for Solar Installation: Finding the Perfect](#)

Discover the best roof slope for solar panels -- learn how roof angle, sun exposure, and mounting systems affect energy efficiency and savings.

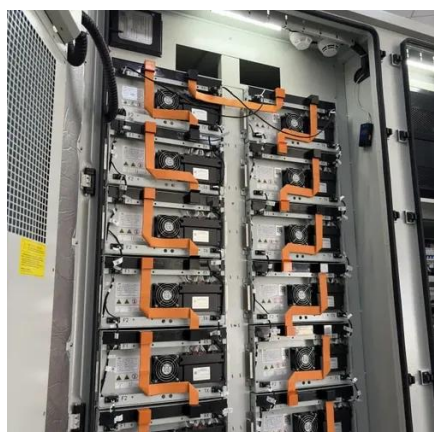
### [Best Roof Slope for Solar Panels - Rescreening Masters](#)

This guide explains how slope affects performance, how to determine the best angle for a given home, and practical options for achieving optimal tilt without compromising roof integrity. The ...



### [Solar Panel Angle & Tilt Calculator \(2026 Guide\) , Roof Pitch Chart](#)

For a fixed system (95% of residential installs), the Golden Rule is to tilt your panels at an angle equal to your Latitude. This averages out the sun's position over 365 days.



### [Roof Pitch for Solar Panels: Best Angles for Maximum ...](#)

Discover the best roof pitch for solar panels to maximize efficiency. Learn how angles impact energy production and optimize your solar setup.



### **Roof Pitch for Solar Panels Calculator**

For most residential properties, a roof with a slope between 30° and 40° is considered optimal for solar panel installation. This angle allows solar panels to lie flat against the roof without requiring additional ...



### **Photovoltaic panel installation slope**



"We tell people that a solar panel For most homeowners, the ideal angle for a solar panel installation is close to or equal to the latitude of your home. This angle is typically between 30 degrees and 45 ...



### [What is the appropriate slope for solar panels? , NenPower](#)

The appropriate slope for solar panels is typically between 30 to 45 degrees, but it can vary depending on latitude, desired energy efficiency, and local climate conditions. The angle of ...



### [Best Roof Slope for Solar Panels: Optimal Angles and Practical](#)

Choosing the right roof slope for solar panels affects energy production, installation cost, and long-term performance. This guide explains how roof pitch, geographic location, seasonal sun ...





## Contact Us

---

For catalog requests, pricing, or partnerships, please visit:

<https://www.firmaskrzypek.pl>

Phone: +48 22 426 71 90

Email: [info@firmaskrzypek.pl](mailto:info@firmaskrzypek.pl)

Scan the QR code to access our WhatsApp.

