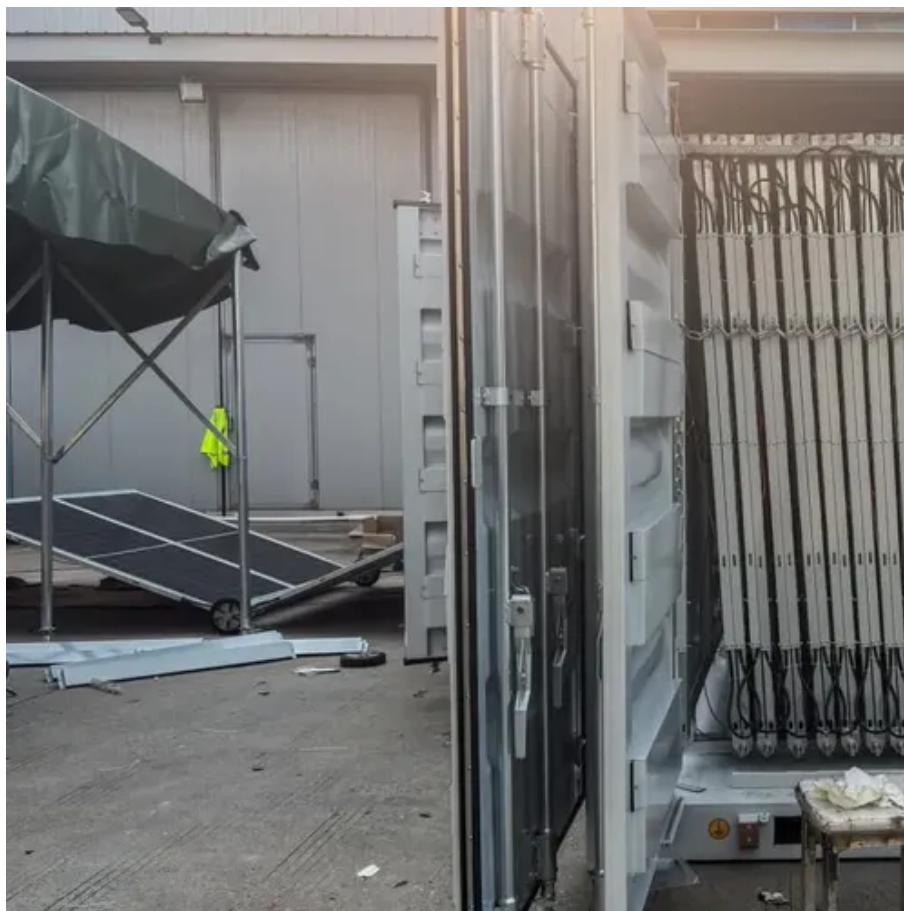




Sap2000 analysis of photovoltaic bracket





Overview

This article investigates a flexible photovoltaic bracket's response to wind vibration. A finite element model is established using SAP2000 software for time course analysis. 3, and mass density is 7850kg/m³. In order to simplify the calculation, the solar panel is applied to the corresponding part of the bracket in the form of gravity load, and a fixed constrain is set at the bottom of the bracket. Pressure Calculation using ASCE 7-16. Therefore, flexible PV mounting systems have been developed. These flexible PV supports, characterized by their heightened sensitivity to wind loading, necessitate a thorough analysis. The non-linear analysis (along with stiffness reduction) is what allows you to use $K = 1$ for the design of members, but you still. Design software:

Bentley SAP2000 3D3S Design standards: American standard, European standard. Which finite element analysis software is used in a Japanese photovoltaic power?

For the the actual demand in a Japanese photovoltaic power, SAP2000 finite element analysis software is used in this paper, based on Japanese Industrial Standard (JIS C 8955-2011), describing the system of fixed. The SAP2000 name has been synonymous with state-of-the-art analytical methods since its introduction over 45 years ago. CSI solvers have been tried and tested by the industry for over 45 years. The SAPFire Analysis Engine can support multiple 64-bit solvers for analysis optimization and can perform.



Sap2000 analysis of photovoltaic bracket



Sap2000 photovoltaic bracket calculation

The results show that: (1) according to the general requirements of 4 rows and 5 columns fixed photovoltaic support, the typical permanent load of the PV support is 4679.4 N, the wind load being ...

[SAP2000 Analysis Report , PDF , Structural Analysis , Screw](#)

This report summarizes the structural analysis of an aluminum framed structure with a shed roof that supports solar panels. A 3D space frame model was created in SAP2000 software to model the ...



SAP2000 , STRUCTURAL ANALYSIS AND DESIGN

CSI solvers have been tried and tested by the industry for over 45 years. The SAPFire Analysis Engine can support multiple 64-bit solvers for analysis optimization and can perform both eigen analysis and ...

[Sap2000 analysis of photovoltaic bracket -Europe's Solar Ascent](#)

For flexible PV brackets, Using MATLAB, we developed a program to generate the fluctuating wind-speed time series, and then created a model in SAP2000 to conduct both static analysis under ...



[Research and Design of Fixed Photovoltaic Support Structure ...](#)

For the the actual demand in a Japanese photovoltaic power, SAP2000 finite element analysis software is used in this paper, based on Japanese Industrial Standard (JIS C 8955-2011), describing the ...

[Structural design of solar mounting bracket / PV support design / ...](#)

Design software: Bentley?SAP2000?3D3S Design standards: American standard, European standard, Chinese standard. Services scope: solar mounting bracket design, drawing, review, load analysis, ...



[Analysis of the response of wind-induced vibrations on flexible](#)

This article investigates a flexible photovoltaic bracket's response to wind vibration. A finite element model is established using SAP2000 software for time course analysis.

[Static and Dynamic Response Analysis of](#)



Flexible Photovoltaic ...

Using MATLAB, we developed a program to generate the fluctuating wind-speed time series, and then created a model in SAP2000 to conduct both static analysis under extreme ...



Sap2000 photovoltaic bracket load analysis

For the the actual demand in a Japanese photovoltaic power, SAP2000 finite element analysis software is used in this paper, based on Japanese Industrial Standard (JIS C 8955-2011),



Contact Us

For catalog requests, pricing, or partnerships, please visit:

<https://www.firmaskrzypek.pl>

Phone: +48 22 426 71 90

Email: info@firmaskrzypek.pl

Scan the QR code to access our WhatsApp.

