



# Server rack specifications for battery swapping stations 600mm depth





## Server rack specifications for battery swapping stations 600mm dept

---



### [6RU 600mm Wide & 450mm Deep Fully Assembled Wall Mount Server ...](#)

Side Panels of this rack are lockable & removable to ensure easy access to the mounted devices. The top and bottom panels of this rack include convenient cable routing ports. The rack ships fully ...

### **6RU 600mm Wide & 450mm Deep Fully Assembled ...**

Side Panels of this rack are lockable & removable to ensure easy access to the ...



### **600mm Wide Server Cabinet - SharkRack**

These 600 mm wide cabinets are available in several heights and depths. They provide flexible ways to mount servers, patch panels, routers, and other sensitive electronic devices reliably and securely.



### **Xtreme 27U IP54 Server Racks 600mm Wide 600mm Deep**

A 27U IP54 server rack for applications requiring a 600mm wide by 600mm deep cabinet with an internal depth of 470mm with ingress protection to protect servers and IT networking equipment from dust ...

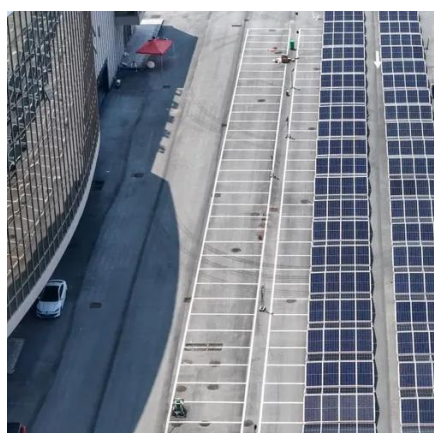


## TS IT Rack Guide Specifications

7.2 universal mounting rails support installation of industry standard 19" rack mount server, network and electronic components, infinitely depth variable attached to depth stays.

## 24U Server Racks

24U Server Rack, 600mm wide & 800mm deep, 1670 lbs loading weight, Color : Black. Server rack, Server Racks, cabinet rack, frame rack, open rack, rackmount barebones server, RAID system.



## [Battery Server Rack for ALPHA 5 PRO . 6-Slot Enclosed Battery Cabinet](#)

Features 600A protected busbars, rugged welded steel frame with powder-coated finish, multiple vents, and fully openable panels for easy wiring and cooling. Includes casters and leveling feet for mobility ...

## OIP Server Rack 600mm Wide



## Specifications

OIP Server Rack 600mm Wide Specifications PH:  
+61 2 8068 8141 , FAX: +61 2 8084 9950 , ,  
info@overip , 42 Princes Highway St Peters NSW  
2044



### 12RU 600mm Wide x 600mm Deep Hinged Wall Mount Server Rack

Our 4Cabling 12RU 600mm Wide x 600mm Deep Hinged Wall Mount Server Racks have been designed as a cost effective data management solution for installers and customers who require quick ...



## Rack ds.cdr

Enclosures are fabricated out of CRCA steel, CNC programmed, punched, bended, welded and powder coated with highest quality standards.



### **4U SERVER RACK CABINET, 600MM DEPTH - RackmountNet**

With the casters loaded and the spring-loaded recessed handles, these simple server racks provide the ultimate mobility for your critical rackmount equipment. RACK600-J-4U also can equip an optional ...



## Contact Us

---

For catalog requests, pricing, or partnerships, please visit:

<https://www.firmaskrzypek.pl>

Phone: +48 22 426 71 90

Email: [info@firmaskrzypek.pl](mailto:info@firmaskrzypek.pl)

Scan the QR code to access our WhatsApp.

